

# REVELSTOKE.

## EXPERIENCE GUIDE



## BRITISH COLUMBIA, CANADA

REVELSTOKE IS LOCATED ON THE TERRITORY OF THE SINIXT, THE SECWEPENC, THE SYILX AND THE KTUNAXA PEOPLES.

# HOW TO USE THIS GUIDE.

- Active Families & Beginner Experiences
- Recreationalists & Weekend Warriors
- ◆ Extremists & Die-Hard Enthusiasts

## ABOUT REVELSTOKE.

- 03 SUSTAINABLE TOURISM.
- 04 GETTING HERE.
- 05 GETTING SITUATED.
- 06 HISTORY & HERITAGE.
- 08 ARTS & CULTURE.
- 10 VISITOR INFORMATION.

## THINGS TO DO.

- 11 WELLNESS.
- 12 NATIONAL PARKS.
- 13 HIKING.
- 14 MOUNTAIN BIKING.
- 16 DIRT BIKING.
- 17 FLYING.
- 18 ROCK CLIMBING.
- 19 GOLFING.
- 20 WATER SPORTS.
- 21 RAFTING.
- 22 FISHING.
- 24 REVELSTOKE MOUNTAIN RESORT.
- 26 HELI & CAT SKIING.
- 28 BACKCOUNTRY TOURING.
- 30 SNOWMOBILING.
- 32 NORDIC SKIING.
- 33 DOWNTOWN.
- 34 FAMILY FUN.
- 36 FOOD & DRINK.
- 37 BREWING & DISTILLING.

## PLANNING.

- 38 DINING.
- 40 ACCOMMODATION.
- 49 ITINERARIES.
- 50 CAMPING.

## WELCOME TO REVELSTOKE.

Here, you earn it.  
You've come further, reached deeper, wanted more.  
Because here, adventure is real.  
But the rewards? Unreal.  
Cut from wood and blasted from rock.  
Connected by steel and bonded by people.  
This place has always been more than just a stopover.  
This is the definitive mountain destination.  
This is #TheRealStoke.

## STOKED ON REVY?

Tag your adventures with  
**#THEREALSTOKE**







# SUSTAINABLE TOURISM.

PHOTO: TOURISM REVELSTOKE | PAINTBRUSH NATIVE SPECIES

## KEEP REVELSTOKE AUTHENTIC AND AMAZING.

We are conscious of the additional pressure that tourism puts on our local environment and we encourage you to keep your impact as minimal as possible while you are here.

### USE GREEN TRANSPORT.

Revelstoke's downtown is walkable and many other attractions can be reached by bike. The Revelstoke Resort Shuttle will get you from your accommodation to the ski hill without the hassle of parking. If you're travelling electric, we have a charge station right in front of the Visitor Information Centre and many locations around town. Please keep Revelstoke idle free.

### SUPPORT LOCAL.

While you're here, do your best to support our community. We have many locally owned businesses and restaurants. We're proud to support local entrepreneurs and hope that you do the same during your visit.

### KEEP OUR WILDLIFE WILD.

When in our parks and wilderness areas, keep your distance from wildlife and refrain from feeding animals. Additionally, some local trails are closed to protect our mountain caribou at certain times of the year. Please check with the Visitor Information Centre regarding wildlife closures.

### STICK TO THE TRAILS.

When you're out exploring, please stick to existing trails, particularly in our sensitive alpine areas. Follow posted signs and respect guidelines.

### LEAVE NO TRACE.

The seven Leave No Trace principles are well established guidelines to follow in the outdoors. By following these simple rules, you'll help to minimize your impact on the environment and keep Revelstoke wild for everyone. The principles are: plan ahead and prepare, travel and camp on durable surfaces, dispose of waste properly, leave what you find, minimize campfire impacts, respect wildlife, and be considerate of others.

### KNOW BEFORE YOU GO.

If you're planning a backcountry trip or outing, make sure that you are equipped with the proper equipment and knowledge. If you don't have the knowledge or equipment, check with our local outfitters and guides who can help you stay safe.



### REVVY OUTDOORS OUTFITTERS

*Gear, clothing, footwear and accessories for camping, hiking, back-packing, climbing, mountaineering, skiing, touring, shredding and more.*

We strive to offer products that help ensure sustainability, both environmentally and economically. Drop by for a FREE copy of our guide to clean camping, hiking, and sustainable living. Shop in person or on-line at [revvyoutdoors.com](http://revvyoutdoors.com)

Downtown 201 Mackenzie Ave. | +1.250.814.2575 | [revvyoutdoors.com](http://revvyoutdoors.com)



# GETTING HERE.

## ESCAPE THE CROWDS.

Revelstoke sits amongst some of the most jaw-dropping and accessible mountain wilderness in BC, flanked by Mount Revelstoke and Glacier National Parks.

Getting here is part of the adventure. Revelstoke is both remote and accessible.

**Air:** Land in either Calgary or Kelowna. There's ground transfer between Kelowna International Airport and Revelstoke.

**Bus:** The Stoke Shuttle provides bus transfers from Kelowna International Airport to Revelstoke. Book your seat at [EverythingRevelstoke.com](http://EverythingRevelstoke.com). Rider Express Transportation services Vancouver to Calgary daily, check out [RiderExpress.ca](http://RiderExpress.ca) for a schedule.

**Car:** Revelstoke is 4.5 hours from Calgary and 6.5 hours from Vancouver on the Trans-Canada Highway. Budget for extra driving time in the winter, and book ahead to get winter tires on your rental vehicle. Winter tires are mandatory on BC highways, from October to April. Check [Drivebc.ca](http://Drivebc.ca) for planned events and road conditions.

### GO PREPARED.

1. Check road conditions
2. Fuel up
3. Pack the essentials
4. Leave early
5. Watch for wildlife

**While in Revelstoke:** The Revelstoke Public Transit Service provides four routes across town. Pick up a rider's guide or purchase a bus pass at City Hall. In winter, the Resort Shuttle will pick you up throughout town and deliver you to and from Revelstoke Mountain Resort. This shuttle will also take you to the nordic trails on weekends. Many accommodations include free shuttle passes with your stay; be sure to ask when booking. Local taxi service is also available.

Departing	Distance	Driving Time
Kelowna, BC	187km / 116mi	2.5 hrs
Kamloops, BC	224km / 139mi	2.5 hrs
Banff, AB	283km / 176mi	3.5 hrs
Calgary, AB	410km / 254mi	4.5 hrs
Vancouver, BC	565km / 351mi	6.5 hrs
Edmonton, AB	701km / 435mi	7 hrs







PHOTO: TOURISM REVELSTOKE | ROBERTS PASS

## GETTING YOUR BEARINGS.

Many of Revelstoke's outdoor adventures are located less than a 10-minute drive from downtown Revelstoke.

Downtown Revelstoke is small and walkable. In the summer, a bike is recommended to get you anywhere in town. Rentals are available.

In the winter, the Revelstoke Resort Shuttle runs throughout the day. There is also evening service in the peak winter months. The Revelstoke Public Transit Service provides bus services Monday to Saturday. All buses are wheelchair-accessible. Pick up a rider's guide to check out the schedule and get fare information.

**Mount Macpherson** *11km south*  
 Summer: Mountain Biking & Running Trails  
 Winter: Nordic & Snowshoeing Trails

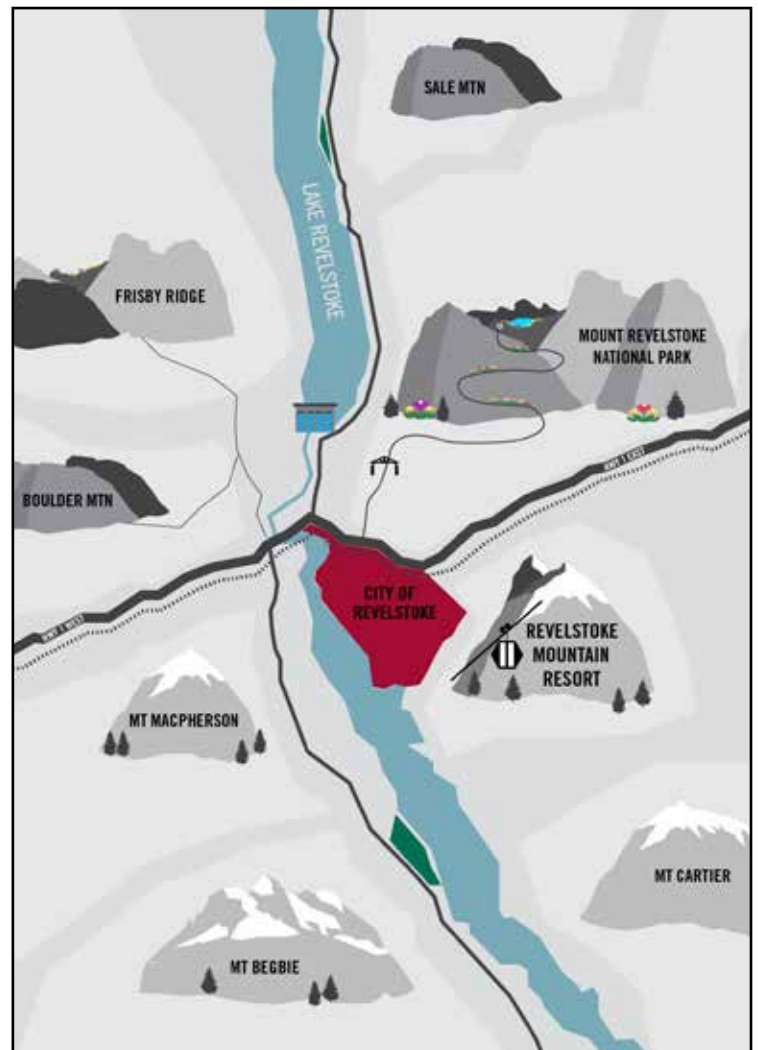
**Boulder Mountain** *8km west*  
 Summer: Mountain Biking Trails  
 Winter: Snowmobile Trails

**Frisby Ridge** *11km west*  
 Summer: Mountain Biking & Dirt Biking Trails  
 Winter: Snowmobile Trails

**Lake Revelstoke** *10km north*  
 Summer: Swimming, Fishing, Paddling & Boating

**Mount Revelstoke National Park** *5km northeast to gate, 25km to the summit*  
 Summer: Hiking, Sightseeing, Scenic Drive  
 Winter: Snowshoeing

**Revelstoke Mountain Resort** *7km east*  
 Summer: Sightseeing, Hiking, Mountain Biking & Pipe Mountain Coaster  
 Winter: Lift Skiing & Snowboarding, Backcountry Skiing & Snowboarding



# HISTORY & HERITAGE.

## JOURNEY THROUGH THE PAST AND PRESENT.

The City of Revelstoke was founded in the 1880s when the industrious trans-continental railway first forged its way through the rugged West.

Before there was a city here, First Nations People called this valley home. Prior to European occupation, the Columbia River area was the home of the Sinixt First Nation for thousands of years. The Secwepemc, Syilx, and Ktunaxa First Nations have also traditionally used the land in this area. When the first settlers came to Revelstoke in 1885, they didn't recognize this area as the territory of the Sinixt people. The traditional land use and hunting rights of the Sinixt were disrupted by the fur trade along the Columbia River. Ultimately, the City of Revelstoke was established near the banks of the Columbia.

Born of ornate Victorian architecture, much of the city's original flair survives to this day thanks to a strong mandate to preserve it. From the inception of Canadian mountain tourism to the contributions of logging and mining, it's all a part of our heritage. Visit the art gallery and museums listed here (right) to learn how Rogers Pass became the birthplace of North American mountaineering. Stand on the historic Nels Nelsen ski jump in Mount Revelstoke National Park for a first-hand view of Revelstoke's past and present. Visit the First Footsteps trail in Mount Revelstoke National Park for First Nations artwork. Stroll the Koo Koo Sint trail at the top of the park to follow in explorer David Thompson's seminal footsteps.



### 3 VALLEY GAP HERITAGE GHOST TOWN

*Come back into history with us!*

Something for all ages, including the Railway Roundhouse and summertime train ride, antique cars & 30 fully furnished historic buildings. Stay overnight next door at the iconic Three Valley Lake Chateau Ltd. featuring 150 comfortable lakeview suites.

19km west of Revelstoke on Hwy 1 | +1.888.667.2109 | [3valley.com](http://3valley.com)

**3 Valley Gap**





## REVELSTOKE DAM VISITOR CENTRE

*It's dam good.*

Explore one of the largest generating facilities on the Columbia River. Enjoy a tour, interactive exhibits, First Nations gallery, theatre and gift shop.



5km N of Revelstoke on Hwy 23 N | +1.250.814.6697 | [bchydro.com/revelstoke](http://bchydro.com/revelstoke)



## BC INTERIOR FORESTRY MUSEUM

*Learn the history of pioneer forestry in BC.*

View our extensive collection of forest machinery, equipment, and chainsaws both in the museum and outside. Visit Collie the Columbia River Tugboat and our viewpoint overlooking the Revelstoke Dam. Wander the grounds and have a picnic. Bring home a locally sourced gift from our shop. Grab a children's activity booklet and walk the gently graded trails on the Riverside Forest Walk. Come and ring the Arrowhead School Bell. Wheelchair accessible.



Next door to the Revelstoke Dam | +1.250.837.8078 | [bcforestrymuseum.ca](http://bcforestrymuseum.ca)



## REVELSTOKE MUSEUM & ARCHIVES

*Celebrating our history.*

Explore two floors of interactive exhibits on local history – learn about First Nations, skiing, avalanches, mining and more. Discover our children's activity room, outdoor heritage garden, archives and reference room, and gift shop.



315 First Street West | +1.250.837.3067 | [revelstokemuseum.ca](http://revelstokemuseum.ca)



## REVELSTOKE RAILWAY MUSEUM & CRAIGELLACHIE LAST SPIKE SITE

*Check out our region's fascinating railway stories!*

Explore Revelstoke's deep railway roots in our magnificent elevator-accessible museum building, large historic equipment yard and green space. Enjoy our huge model railway, marvel at our majestic steam locomotive, or try running a diesel locomotive in our simulator. Shop our museum store for a unique souvenir or book. Visit Craigellachie, home of The Last Spike, 50km west on Highway 1 – a seasonal attraction!

719 Track Street West | +1.250.837.6060 | [railwaymuseum.com](http://railwaymuseum.com)



## REVELSTOKE VISUAL ARTS CENTRE

*Revelstoke's public art gallery and art programming centre.*

A non-profit facility dedicated to the creation, exhibition and promotion of the visual arts featuring select regional and local artists, art classes for all ages and abilities, and a gift shop. Experience the local landscape and culture in the works featured. In the summer, enjoy a wander through our community flower and vegetable garden.



320 Wilson Street | +1.250.814.0261 | [revelstokeartgallery.ca](http://revelstokeartgallery.ca)



## NELS NELSEN SKI JUMP AND BEAVER LODGE BIKE PARK

*Soar to dizzying heights.*

The Nels Nelsen Ski Jump at the base of Mount Revelstoke National Park allows you to explore a historic ski jumping venue which hosted annual tournaments from 1915 to the late 1960s. Just below it, the Beaver Lodge Kids Bike Park is an interpretive bike park and creative playscape designed for children 1½ to 7 years.

Mount Revelstoke National Park | +1.250.837.7500 | [pc.gc.ca/revelstoke](http://pc.gc.ca/revelstoke)





# ARTS & CULTURE.

## REVELSTOKE IS BURSTING WITH CREATIVITY.

With a growing cultural scene featuring festivals, galleries, exhibitions and performances, discover a thriving community of mountain creatives.

Our emerging arts scene is a source of community pride. Look for Revelstoke's public "Art Alleries" in the heart of downtown, or our visual art centre gallery, which primarily features exhibitions of local artists. The art gallery proudly displays the work of local painters, sculptors, and photographers. Many of our local shops sell and display locally handcrafted products. Our farmers' markets showcase the incredible talent of our small town. Arts Revelstoke coordinates live performances, films, and shows. Take in a film at the historic Roxy Theatre. There are abundant options to get immersed in Revelstoke's arts scene.

### REVELSTOKE EVENTS.

Revelstoke hosts visitors and locals alike for incredible events year-round. Check out our calendar before planning your visit to ensure that you can take advantage of the many arts, culture, and sports events we have to offer.

See [seerevelstoke.com/events](http://seerevelstoke.com/events) for details or scan the QR code to the right.



• Watch us blow glass!



• Shop our studio!



• Check out our workshops!



Open Everyday 11 am to 6 pm 1741 Celgar Rd in Revelstoke

1-250-837-9696 • [www.bigeddyglassworks.ca](http://www.bigeddyglassworks.ca)





## REVELSTOKE FARMERS' MARKETS.

Revelstoke farmers' markets are on all year round! During the summer months, find an array of farmers and craft vendors every Saturday morning on First Street and Mackenzie Avenue.

During winter months, you will find the winter market and its dedicated vendors at the Revelstoke Community Centre bi-weekly.

For schedule and location details, contact the Revelstoke Visitor Information Centre.

## REVV. LIVE OUTSIDE.

REVV. Live Outside features 58 nights of live music through July & August showcasing artists from British Columbia, across Canada and worldwide every evening. The atmosphere in Grizzly Plaza is electric; dancing, patios, food trucks, popcorn and frozen dessert round out the experience creating a uniquely laid back, friendly BC festival vibe.

See [artsrevelstoke.com](http://artsrevelstoke.com) for details.



PHOTO: ALEXIS WELCH | REVV. LIVE OUTSIDE



## REVELSTOKE PERFORMING ARTS CENTRE.

The Revelstoke Performing Arts Centre is a beautiful and spacious facility with great acoustics, lights and comfortable seating. Check out the Arts Revelstoke website for their schedule of theatrical performances, films, and live music.

Find out more at [artsrevelstoke.com](http://artsrevelstoke.com).

## REVELSTOKE VISUAL ARTS CENTRE.

Showcasing local and regional artists, the Revelstoke Visual Arts Centre is a great place to visit while you're in town. The Visual Arts Centre has a fully equipped woodshop, pottery guild, jewelry guild and artist studio spaces for rent. It is the hub of creativity in Revelstoke.

Check the events calendar for new monthly exhibitions in the gallery. Purchase a piece by a Revelstoke local artist and check out the gift shop. See [revelstokeartgallery.ca](http://revelstokeartgallery.ca) for current and upcoming shows.



PHOTO: TOURISM REVELSTOKE



## LUNA NOCTURNAL FESTIVAL OF ART & WONDER.

Each fall, the LUNA Nocturnal Festival of Arts and Wonder brings whimsy and light to downtown Revelstoke. It transforms the usual into the unusual and the ordinary into the extraordinary. There's no way to describe LUNA in a way that does it justice; just make sure you're in Revelstoke at the end of September to experience it for yourself.

Find out more at [lunafest.ca](http://lunafest.ca).



# VISITOR INFORMATION.

## YOUR GO-TO RESOURCE WHILE IN REVELSTOKE.

Easily accessible and conveniently located on Victoria Road, our friendly staff can provide you with all the information you need to make the most of your stay.

Whether you're passing through, here for the day, or enjoying an extended trip, drop into the Revelstoke Visitor Information Centre and speak to one of our passionate counsellors to find out everything Revelstoke offers. Our counsellors are professionally trained and love to live and play in Revelstoke. They are eager to help you have the best experience and make the most of your visit.

Our counsellors are constantly on the lookout for the best experiences. They will help advise you about accommodation and activities, provide maps (as pictured below), offer directions and let you know about the local gems. In the summer months, you may also find our Roaming Visitor Centre Van located at Mount Revelstoke National Park or Revelstoke Mountain Resort.

Located in the heart of downtown, the Visitor Centre team is here to assist you and customize your trip. Amenities available at the Centre include:

- Free parking and RV parking
- Accessible building and washrooms
- Free WiFi
- Electric car charger
- Souvenir shop and local art
- Year-round trip planning by email or phone



## CONNECT WITH US.

[www.SeeRevelstoke.com](http://www.SeeRevelstoke.com)  
@Revelstoke | #TheRealStoke

Revelstoke Visitor Information Centre  
[visitor.ctr@revelstokechamber.com](mailto:visitor.ctr@revelstokechamber.com)  
301 Victoria Rd | +1.250.837.5345





# WELLNESS.

## TAKE TIME TO UNWIND.

Even the most seasoned mountain people will tell you the best way to stay in the game is to take some time to care for your body, mind and spirit.

Soak in the healing waters of a nearby hot spring. Take Highway 23 South and catch the free ferry towards Nakusp, leaving once per hour. After the ferry, Halcyon Hot Springs Resort is ten minutes down the road. For more of an adventure and natural pools, visit the backcountry Halfway River Hot Springs (summer only), a little farther down the road. For more info visit [sitesandtrailsbc.ca](http://sitesandtrailsbc.ca).

They say staying limber keeps you young. Hit up one of Revelstoke's yoga studios at one of their daily drop-in class. In the afternoon, grab a coffee and drive up the Meadows in the Sky Parkway in Mount Revelstoke National Park to wander amongst the wildflowers. During the snowy months, rent some snowshoes and stretch your legs while taking in the views.

Whatever you choose for the day, stay unplugged from your devices. A low-stress ski tour, mountain bike ride, or stay in a backcountry cabin or lodge is a great way to disconnect and purge the digital fuzz from your brain. Advanced yoga classes and mindfulness retreats are also available in town, and don't skip out on getting a massage or a spa treatment!



### HALCYON HOT SPRINGS RESORT

*Immerse yourself in nature. Immerse yourself in wellness.*

Situated in a spectacular waterfront location on beautiful Upper Arrow Lake, with views of the soaring Monashee Mountains, you are invited to relax and immerse yourself in ancient healing waters and their beneficial minerals. Dine with us at our restaurant, Alc do. Relax with our onsite Spa and Wellness center. For Spa bookings, please call 250-265-8293.

5655 Hwy 23, Nakusp | +1.250.265.3554 | [halcyon-hotsprings.com](http://halcyon-hotsprings.com)



### BIRCH & LACE HAIR COMPANY

*Salon, spa and boutique.*

Indulge yourself in the caring hands of the Birch & Lace team, which offers a full salon & spa menu. Driven by a mission to connect the beauty industry to environmental responsibility, a service at Birch & Lace is a great way to spend your time in Revelstoke when you are ready to relax and unwind.

215 Mackenzie Ave | +1.250.814.2508 | [birchandlcesalon.com](http://birchandlcesalon.com)



# NATIONAL PARKS.

## TWO NATIONAL PARKS SIT AT OUR DOORSTEP: MOUNT REVELSTOKE & GLACIER.

Gather your family and circle the trunk of an ancient cedar tree, stand on a mountain summit, and take in vivid alpine wildflowers in full bloom.

Drive into Mount Revelstoke National Park on the Meadows in the Sky Parkway. The paved road begins in lush evergreen forests of hemlock and white pine; bringing you first to the Beaver Lodge Kids Bike Park, then the Nels Nelsen exhibit—where ski jumping world records were once set. You can literally step into “Nels’ Knickers”, an interactive sculpture that lets you lean into the air like a ski jumper. From here, wander into Inspiration Woods or cruise the Soren Sorensen trails, a local favorite.

Further East on Hwy 1, visit the Skunk Cabbage and Hemlock Grove Boardwalks, or explore railway history along easy trails in Rogers Pass National Historic Site.

Saunter through high alpine meadows with spectacular mountain vistas at the top of Mount Revelstoke National Park. As the forest gives way to moss and heather, lingering ice and snow frame impressive quartzite walls in the distance. Hike the Balsam Lake, Eagle Knoll, Koo Koo Sint, Heather Lake, or First Footsteps trails for a solid introduction to the area.

For a bigger itinerary, step up your stride in Glacier National Park with a visit to Marion Lake. Another great option is to follow the steep trail up Avalanche Crest, along treeless slopes offering views of glaciated peaks ringing in rocky harmony.

Graduate from the meadows in Mount Revelstoke National Park onto Miller and Eva Lakes, a farther 5.5km and 6km out. Want more? Continue another 3.5km from Miller out to Jade Lakes—a trail runner’s dream circuit.

In Glacier National Park, the famously steep Abbott Ridge Trail offers spectacular mountain, glacier and valley views. If you have mountaineering skills, check out famous Mount Sir Donald across the valley, to ascend over 2,000 meters to reach the summit.

### **PARKS CANADA HIKING MAP:**

Pick up yours for free from the Revelstoke Visitor Information Centre, visit our website or find maps in the national parks.



### **REVV OUTDOORS OUTFITTERS**

*Gear, clothing, footwear and accessories for camping, hiking, back-packing, climbing, mountaineering, skiing, touring, shredding and more.*

Everything you need for all your adventures in our amazing parks. Drop by for our FREE bear safety demonstration and all your supplies. Shop in person or on-line at [revvoutdoors.com](http://revvoutdoors.com)

Downtown 201 Mackenzie Ave. | +1.250.814.2575 | [revvoutdoors.com](http://revvoutdoors.com)







# HIKING.

PHOTO: LAURA SWARTZ | MOUNT SPURST

## REVELSTOKE SITS IN THE THICK OF THE WORLD'S ONLY INLAND TEMPERATE RAINFOREST.

Your boots were made for walking and these trails were made for those boots. From short river-valley flats to long alpine ridges, we've got you covered.



Downtown Revelstoke's Greenbelt River Trails are as short or as long as you want to make them. With easy in and out points all along the way, these paths are also home to roughly 60 species of beautiful birds.

You can also visit Sutherland Falls in Blanket Creek Provincial Park. It's a 5 minute walk to a 60 ft. chute of cascading water that brave kayakers sometimes plunge down!

### REVELSTOKE HIKING MAP:

Free copies available at the Revelstoke Visitor Information Centre, in the parks or on our website.



For another impressive wall of tumbling water, wind your way down Highway 23 South for 8km until you get to the parking lot with a trail head sign for Begbie Falls Recreation Trail. Traverse through the mossy forest of giant trees for 3km until you get to the recreation site. It's a short, steep hike onto the falls from there.

Want more? Head to Revelstoke Mountain Resort and explore their network of lift accessed hiking trails serving up incredible views of the surrounding peaks.



There's no peak in Revelstoke more iconic than Mount Begbie. Its soaring double summits are aproned by a surrounding glacier. The trail is steep with outstanding and rewarding views, which only come after several hours of hiking. Once you reach the campsite where the vistas begin in the alpine, you'll need mountaineering skills to carry on any farther. There's a glacier to cross and an exposed scramble to the top.

Short on time but still craving adventure? Local guiding companies offer helicopter hiking tours to alpine areas throughout the region.



### HIKING AT REVELSTOKE MOUNTAIN RESORT.

*Explore over 20km of hiking trails.*

Feeling up for a challenge? Take on the infamous Kill the Banker trail, featuring a climb of 898m over 3.8km. Alternatively, hop aboard the Revelation Gondola for a quick trip to the alpine where you will be met with several stunning viewpoints and hiking trails for various abilities.

2950 Camozzi Road | +1 866.373.4754 | [revelstokemountainresort.com](http://revelstokemountainresort.com)



**HELI CANADA ADVENTURES - We love making our adventure yours. Small group heli hiking, picnics, mountaineering & more.**  
[info@helicanada.com](mailto:info@helicanada.com) | +1.888.837.5417 | +1.250.837.5417 | [helicanada.com](http://helicanada.com)



# MOUNTAIN BIKING.

PHOTO: JOE ROBERTS | BOULDER MOUNTAIN

## FROM LOAMY STEEPS TO FLOWY PACKED GOLD, REVELSTOKE'S SPRAWLING SINGLETRACK AND EPIC ALPINE RIDES ARE SECOND TO NONE.

Home to nine unique riding zones and one of BC's first adaptive mountain bike trails, Revelstoke's riding scene is world renowned for a reason.

Take your young ones (recommended ages: 1½ to 7 years) to Beaver Lodge Kids Bike Park on lower Mount Revelstoke. Its creative animal-themed features will have imaginations flying as kids roll over salamander tails and between fake animal droppings. Grown ups can head over to Mount Macpherson's Griffith Creek beginner loops, where the low angle "brown pow" is smooth and inviting. While you're there try out Miller Time - a 1km multi-directional loop built to accommodate adaptive bikes and beginners.



PHOTO: TOM POOLE | MILLER TIME

Macpherson's Flowdown is one of the buffest trails around and will keep you swooping for a solid morning with all sorts of possible linkups and add-ons. For a longer version of the same with an alpine backdrop, carry on to Frisby Ridge. The 12km out-and-back (24km return) cross-country trail traces a near perfect ridge at incredibly civilized grades to a glassy alpine lake. If you've still got juice, hammer another 5.7km on the extension, blasting up and back down snaky berms and rolling landscape. Back at the parking lot, the Ultimate Frisby Connector is a tempting downhill add-on but take note, it gets full-on by the time you hit the Ultimate Frisby DH trail.

Revelstoke Mountain Resort's most famous trail, Fifty Six Twenty, takes you on a long roller coaster of blue flow with seemingly endless jumps and berms. Take the gondola up and access it right from there, or climb 7km on the Stoke Climb to enjoy all 15km of machine-built trail, running the full vertical of 5,620 ft. The Resort continues to expand their offering of downhill trails, and riders will be rewarded with a mix of tech and flow, mellow and challenging.

Boulder Mountain is Revelstoke's classic downhill playground. It's got everything from bike park style flow and lofty table tops to wooden stunts and loamy steeps. With over a dozen trails, you can easily pick your poison. While it's mostly a shuttling area, there are mellower trail options in the mix, and many enduro riders choose to pedal up the road.

For a thigh-crushing cross-country epic, drive Highway 23 North to Keystone. This 11km (22km return) technical out-and-back trail has punchy climbs and tight switchbacks up alpine cirques. The demanding alpine route links awe-inspiring views of the Monashee Mountains with some of the most rewarding sections of alpine singletrack in BC. There is no cell service, so full backcountry protocols are in order—be prepared!

### REVELSTOKE MOUNTAIN BIKING MAP:

Pick up yours for free from the Revelstoke Visitor Information Centre or visit our website.



# TRAIL KARMA - DONATE TO YOUR LOCAL VOLUNTEERS

The Revelstoke Cycling Association is a progressive, volunteer driven non-profit association with a mission to lead sustainable and inclusive mountain biking opportunities in Revelstoke. From riverside rambles to alpine epics, they manage over 150kms of trails spanning three mountains and facilitate events to get all bikers to explore them, while acting as a multi-faceted voice for cycling in Revelstoke and beyond.

If you're riding Revelstoke, please make a donation so we can continue to maintain and build trails. There are a number of ways to give back to biking in Revelstoke:

1. Donate to the Revelstoke Cycling Association at [bikerevelstoke.org](http://bikerevelstoke.org)
2. Earn Trail Karma by donating at [trailforks.com/karma](http://trailforks.com/karma)
3. Buy a membership at [bikerevelstoke.org/membership](http://bikerevelstoke.org/membership)
4. Join a volunteer dig day. Learn more on our website!

@bikerevelstoke | [bikerevelstoke.org](http://bikerevelstoke.org)



## TANTRUM RIDE COMPANY

*Don't let your dreams be dreams.*

Tantrum Ride Co. is an independent bicycle store in the heart of downtown. We aim to be a welcoming place for friendly advice and top-quality cycling products, including bikes from Trek, Ibis and Electra. We are also a full service repair and rentals shop. Come take one for a ride.

306 First St W | +1.250.837.5979 | [tantrumrideco.com](http://tantrumrideco.com)

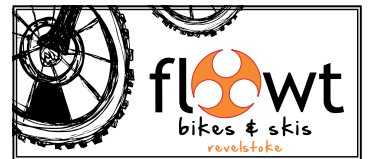


## FLOWT BIKES & SKIS

*It's all about the ride.*

We absolutely love to ride bikes! That's why we do all we can to help you hit the trails and find the perfect riding experience. We're here to help - whether you need a new ride, expert mechanical service, or the latest trail info. Looking for a specialty part or repair? Want to demo a new ride? We have you covered.

709 Victoria Rd | +1.250.837.4044 | [flowtbikes.com](http://flowtbikes.com)



## REVELSTOKE MOUNTAIN RESORT

**MTB Rentals: Downhill | Enduro | E-Bikes**

Need some wheels? No problem! Come rent a two-wheeled steed for the day from the Rental Shop at Revelstoke Mountain Resort. Whether you're looking to tackle the e-bike friendly network at Macpherson or Boulder Mountain, or the downhill trails at the Bike Park, we've got you covered!

2950 Camozzi Road | +1 866.373.4754 | [revelstokemountainresort.com](http://revelstokemountainresort.com)



## WANDERING WHEELS

**MTB Tours, Lessons, Rentals & Shuttles**

Ride with our experienced local guides and learn from our certified professional instructors. Rent from our fleet of full suspension Transition mountain bikes and regular or electric townie bikes. Hop in our shuttle to get to the start of some of the best trails in B.C. or join us for a truly epic multi-day bike vacation in Revelstoke and beyond!

709 Victoria Road | +1.250.814.7609 | [wanderingwheels.ca](http://wanderingwheels.ca)



A dirt biker wearing a red and white jersey and a helmet is riding a trail through a forest. The trail is rocky and narrow, surrounded by tall trees and green foliage. Another biker is visible in the background.

# DIRT BIKING.

## WELCOME TO ONE OF THE BEST ALL-ROUND MOTO ZONES IN BC.

Featuring two main trail-riding areas, a full-sized motocross track, a challenging endurocross track, and a popular kids/beginners track.

Take Westside Road 10km north of downtown Revelstoke to find the trail system, where there are kiosks with maps at each riding zone. Kids and beginners can warm up on the beginner track. Trail-bound full-sized humans can head towards Kick Start and Easy Street. Want to check out the action before deciding if you're into trying it? There's a handy viewing platform to spy the scene.

To start, dig into Ego Trip in the Lower Frisby zone, then work your way up and onto the Deadman's Creek network for a total of 75km of purpose-built moto trails to work through. Follow the Yellow Brick Road on your journey towards the techy stuff and catch glimpses of glassy Lake Revelstoke shining below.

Get your heart pumping on the full-sized motocross track—sending floaty doubles, long tables and poppy step-ups to your heart's content. Then ride over to Rowland's Revenge, the relentless tacky loop climbs high above the lake to some of the best views going—if you're not busy whiskey-gripping your bars!

PHOTO: STEVE SHANNON | ALPINE RIDING



### REVELSTOKE DIRT BIKING MAP:

Pick up yours for free from the Revelstoke Visitor Information Centre or visit our website.

### REVV RIDERS DIRTBIKE CLUB - *Did you enjoy your ride?*

The Revy Riders Dirtbike Club depends on membership fees to maintain and build our trails and tracks. All money collected goes directly towards maintenance and further development. To ride our tracks, become a member or sign our waiver and pay \$10 for a day pass. Deposit into the lockbox provided at the kiosk. [revyriderz@gmail.com](mailto:revyriderz@gmail.com) | [revyriders.ca](http://revyriders.ca)

### GREAT CANADIAN TOURS AND FULL SPEED RENTALS - *Dirt bike & side by side rentals and tours.*

+1.250.837.5030 | [riderevelstoke.ca](http://riderevelstoke.ca) | +1.250.837.8883 | [fullspeedrentals.com](http://fullspeedrentals.com)





PHOTO: PAUL TISCHELAR / GLACIER HELICOPTERS

## THE BEST SEAT IN THE HOUSE.

Take a tandem paraglide flight over the Columbia River, or land on a remote mountain peak with a helicopter tour.



If you've never been in a helicopter, there's no better place to experience unfettered flight. Cover miles in minutes and get an unequalled perspective. Hover comfortably over Wap Lake or the Revelstoke Dam, buzz over the Upper Arrow Lake Flats, swoop by waterfalls, rivers, and even tumbling glaciers. It's a helicopter, you can go anywhere!



It's time for that tandem paraglide flight you've always talked about. Starting from 2,200 meters above sea level, launch off Mount Mackenzie, the most vertical relief in North America. All pilots are certified by the Hang Gliding and Paragliding Association of Canada. Tandem flights are open to all ages, you don't need any previous experience, and you can do it year-round.



Experienced licensed pilots can bring their own wings and launch off the top of Revelstoke Mountain Resort, experiencing the freedom and exhilaration of big mountain flying. For safety, please be sure to brush up on the rules and get in touch with the local pilots. Our local paragliding company has put information together for visiting pilots; visit [revelstokeparagliding.com](http://revelstokeparagliding.com).

PHOTO: ALAN MILJKOVIC | REVELSTOKE PARAGLIDING



### GLACIER HELICOPTERS

*Take your adventure to new heights!*

Sightseeing tours, heli-biking, heli-weddings, heli-picnic, airport transfers, and custom work.

3451 Hwy #1 - 5km west of Revelstoke (year-round)  
+1.250.837.9569 | [glacierhelicopters.ca](http://glacierhelicopters.ca) | Instagram: @glacier\_helicopters



# ROCK CLIMBING.

**FROM SPORT TO TRAD, SINGLE PITCH TO MULTI,  
COME HANG ON OUR ROCK AND FIND YOUR FLOW.**

Routes ranging from  
5.7 to 5.13b.

If you're quite green, we recommend taking a lesson or hiring a guide to show you the ropes. Otherwise, pick up a copy of the Revelstoke Rocks guidebook by Ruedi Beglinger from one of the outdoor stores downtown. He's the guy that first established many of the climbs in the area, and his book remains the best resource to this day. Next, head 10 minutes down Highway 23 South to Begbie Bluffs, with awesome single-pitch sport-climbing options for kids, beginners and even first climbing dates. The crag is a short walk on a well-defined trail from the parking lot. Start with High & Dry or Bifacial Retouch (5.8 and 5.9 respectively).

Shaketown is a little farther down the highway from Begbie Bluffs, with a further plethora of single-pitch intermediate routes, like Quicksilver Daydreams (5.10b), Two Hands (5.11a), and Flying Shoes (5.11b). To start on some multi-pitch, drive another 10 minutes down the highway to the shady and river-cooled Blanket Creek Canyon and walk 10 minutes to Blanket Buttress. Next, crimp and heel hook your way up the Blanket Arête (5.10a), or Tree Line (5.10c) and keep building from there.

Waterworld may be a mediocre movie, but it's a mind-blowing climbing wall. To tag the towering cliffs rising right out of Lake Revelstoke, you first rappel down to belay stations made of planks bolted to the wall. Choose from two to four pitches as you work your way back up routes ranging from 5.10b to 5.12a, these are longer climbs. Start on Pirates of Waterworld (5.10b) and No Panic In The Titanic (5.11b) and eye up other routes from there. Remember to watch for rock fall, and to wear a helmet even when belaying.

**WANT MORE INFO?** Check out the Rock Climbing page on our website.



## REVVY OUTDOORS OUTFITTERS

***Gear, clothing, footwear and accessories for camping, hiking, back-packing, climbing, mountaineering, skiing, shredding and more.***

Sterling rope, cord & webbing, CAMP carabiners, Wild Country nuts and Friends, Ortovox avi safety, Garmin In-Reach, plus all the clothing and accessories you need. Drop by to purchase your copy of Revelstoke Rocks – the ultimate guide to climbing in the area. Shop in person or online at [revvyoutdoors.com](http://revvyoutdoors.com).

Downtown 201 Mackenzie Ave. | +1.250.814.2575 | [revvyoutdoors.com](http://revvyoutdoors.com)



**REVELSTOKE CLIMBERS ACCESS SOCIETY -** *If you're climbing in Revelstoke, please make a donation to the RCAS to help with crag upkeep and maintenance.* [revelstokeclimbers.org](http://revelstokeclimbers.org) | [send-it@revelstokeclimbers.org](mailto:send-it@revelstokeclimbers.org)





# GOLFING.

## INCREDIBLE VIEWS FROM THE FAIRWAYS.

The tree-lined, 18-hole Revelstoke Golf Course will woo experienced swingers and newcomers alike.

The layout of the Revelstoke Golf Club is challenging, yet forgiving. Players of all abilities will have an exceptional day and a relaxing, timeless experience. Grab a bucket of balls and head over to the practice facilities to brush up on your skills. The course offers an incredible backdrop of Mount Begbie and the full length driving range features synthetic grass tees as well as real grass tees and target greens, perfect for improving shots of any length. There is also a full size chipping and putting green and a practice bunker to cover every aspect of your short game. Whether you're a beginner or advanced, you can improve your game dramatically with the course instruction programs. Wrap up your day at the Clubhouse Restaurant with a cold brew and a great meal. Once you're all tuned up, the Revelstoke Golf Course hosts the oldest tournament in the province every September: The Labour Day Classic.

PHOTO: STEVE SHANNON



PHOTO: ZOYA LYNCH



### Revelstoke Golf Course

*One of BC's most beautiful golf courses.*

This historic 18-hole, par 72, 6537 yard championship layout provides an excellent golfing challenge, and is conveniently located just minutes off the Trans-Canada Highway. Situated on a peninsula surrounded by stunning mountain views, golfing in Revelstoke is as much about the location as it is about the game.

171 Columbia Park Dr. | +1.250.837.4276 | [golfrevelstoke.com](http://golfrevelstoke.com)



# WATER SPORTS.

## GO FOR A FUN PADDLE OR GET WILD IN RAPIDS.

Magnificent rivers and lakes  
flow through Revelstoke.

Big, flat and glassy. Lake Revelstoke is prime for an easy kayak, stand-up paddleboard, canoe tour, or swim. It's perfectly cool on a warm summer's day. Paddling tours meander into coves and adjoining river systems that make up the major dividing waters of the Monashee and Selkirk Mountains. Go to Martha Creek Provincial Park for lunch along the pebbly beach or to lay on the grass. Explore the Columbia River on a comfortable raft guided tour while learning about this famous river. For the warmest water, hit up Williamson Lake back in town, with a sandy beach, playground, and mini golf.

**WANT TO MEET OTHER PADDLERS?** Contact the Revelstoke paddlesport association. [paddlerevelstoke.ca](http://paddlerevelstoke.ca)

If you're comfortable navigating without a guide, rent a canoe or kayak for yourself. Lake Revelstoke, the Columbia River, or Upper Arrow Lake are all dotted with hidden waterfalls and inlets around every bend. Be aware of shimmying into colder waters, fluctuating water levels due to the dams, and watch for anglers and power boaters.

For an unforgettable guided adventure, check out our local rafting scene. Take a trip down the Illecillewaet River. The biggest rapids come in high water, from mid-June into mid-July. Low water starts in late July, and allows for a few more stops, swims, and gentler floats along the way. Minimum requirements for kids vary during high water, so check with the rafting companies.

If you're a whitewater kayaker, Revelstoke is full of frothy runs. There's everything from the class II section of the Lower Jordan to the roaring class IV-V sections of the Illecillewaet. You can also check out the Upper Jordan and the Pingston River. For the very bold, Blanket Creek's iconic 60-foot Sutherland Falls offers all the airtime you could want.

If you're here to paddle, please consider supporting the Revelstoke Paddlesport Association, who promote paddling in Revelstoke by providing programs and equipment, organizing events, promoting safe practices and developing and maintaining water access and infrastructure for the public. See [paddlerevelstoke.ca](http://paddlerevelstoke.ca) for more details.



### NATURAL ESCAPES KAYAKING AND CANOEING

**EXPERIENCE** our beautiful lakes & **SEE** the mountains from our view!

Join us for a memorable guided tour, including snack and photos! We offer a variety of 2 & 3 hour tours for beginners to advanced paddlers. Rentals available for guests with previous experience. We are one of the top-rated activities and have been awarded Trip Advisor's TRAVELLER'S CHOICE for 2020 & 2021 as well as 7 YEARS of Certificates of Excellence.

*Proudly sharing our love of kayaking and nature with our guests for 23 seasons!*

+1.250.837.7883 | [naturalescapes.ca](http://naturalescapes.ca) | [nkayaking@telus.net](mailto:nkayaking@telus.net)





# RAFTING.

PHOTO: APEX RAFTING



25 YEARS  
1998 • 2023

## WILD BLUE YONDER est. 1998 RAFTING ADVENTURES

**25 years of fun & safety on 6 rivers.**  
**2 Locations. Endless Memories.**

During our 25th season, join us for the trip of a lifetime: challenge the **Revelstoke Rapids** (ages 8+) or relax on the **Columbia River Float** (ages 4+).

MEMBER - BC RIVER OUTFITTERS ASSOCIATION

**Online** [wildblueyonder.ca](http://wildblueyonder.ca)

**Phone** 1 877 945 3786 **Text** 1 780 666 9718

**WhatsApp** +1 780 827 8850

**BC Location** 621 Victoria Rd, Revelstoke



## APEX RAFTING COMPANY

**30 years on this river. Consistent ownership since day 1.**

Apex Rafting has been synonymous with Rafting in Revelstoke since 1993. Rated 5 Stars on Facebook, Google and TripAdvisor our focus has always been your safety and enjoyment on this beautiful and exhilarating rafting trip. Up to 26 km on the river with lots of great rapids, scenic floats and stunning views. Truly a fantastic trip.

- All Equipment Provided
- Riverside Fresh Fruit & Pastries
- Rafting Trip Photos no charge

**112 First St. E (seasonally)**  
**250-837-6376 / [apexrafting.com](http://apexrafting.com)**

**APEX**  
**RAFTING**  
SINCE 1993 REVELSTOKE, BC







## ANGLERS CAN CAST INTO OVER 80 LAKES AND OTHER RICH WATERWAYS.

There are over 200 rivers, creeks, and streams churning with freshwater fish around Revelstoke.  
All within 50km (31mi) of town.

First, if you don't have a BC fishing license and the fishing regulation book, start by picking them up at Service BC in the Revelstoke Courthouse, online at [www.fishing.gov.bc.ca](http://www.fishing.gov.bc.ca), or at Johnny's Wild Outdoors shop.

Once you're legal, aim for one of the quiet corners of Williamson Lake just five minutes south of town. The small 3.9-hectare local fishing hole has been regularly stocked with rainbow trout since 2009. You don't have equipment, hire a guide, they will get you sorted!

If you happen to be in town on Father's Day, join the fun with your troops for the family fishing derby.

Once you are feeling more adventurous, stop at one of our fishing stores to get the proper gear for our area and find out about the latest deets. Fishing is all about knowledge, you can nerd out for days! Head on the shore of the Columbia River or Lake Revelstoke and fish on!

For better luck, hire a canoe, kayak or SUP to take you offshore. Be sure to watch the weather as strong winds can pick-up fast on bigger bodies of water. Furthermore, our local fishing guides can take you out, almost anywhere!

Now that you are getting comfortable, remember the regulations. Many rules are in place from catch and release, quotas, barbless hooks, restricted areas and much more.

To explore further, put your boat in one of the big lakes and hook some giants. You will find bull trout, burbot, kokanee salmon, rainbow trout and more. Head to Upper Arrow Lake, Lake Revelstoke or Kinbasket Lake in early spring or late fall for open-water trolling. The bigger lakes have big fetches and can pick up strong winds, so be sure to keep an eye on the weather.

If fly fishing is your niche, access the creeks around Revelstoke for some epic action. Many creeks can be accessed by foot or roads. If you want to find the pot of gold, hire a local guide. Guides can take you to the most secluded spots via logging roads, jet boat or Helicopter.



### AAA GUIDED TOURS

#### *Affordable Angling Adventures.*

At AAA Guided Tours we strive to promote safe, sustainable and environmentally friendly fishing practices. Our trips provide you not only with fish. You'll also come away with knowledge on how to catch beautiful trout which inhabit our rivers and lakes. We hope to hook children into the thrills of fishing / exploring the great outdoors and a few of our trips are half price for children.

[aaa.guided.tours@gmail.com](mailto:aaa.guided.tours@gmail.com) | +1.778.252.1414 | [aaaguidedtours.com](http://aaaguidedtours.com)







PHOTO: TOM POOLE



## JOHNNY'S WILD OUTDOORS

*Revelstoke's one stop shop for the outdoor sportsman!*

Servicing Revelstoke for over 50 years, we have the largest selection of fishing and hunting products for all of your outdoor needs. Our extensive knowledge will ensure you have the right products for your ideal sport. We issue BC fishing licenses, offer the latest gear and lures, and provide kayak rentals. We will set you up for fishing in any season, even ice-fishing!

770 Lundell Rd | +1.250.837.4228 | [johnnyswildoutdoors.com](http://johnnyswildoutdoors.com)



## FINE LINE SUP & FLY / STONEFLY GUIDING CO.

*Revelstoke's Premiere Fly Fishing and Paddleboard Outfitter.*

In addition to offering legendary guided experiences, Fine Line SUP & FLY's downtown shop features top brand Fly Fishing and Paddleboarding gear and apparel. Walk & wade, boat or helicopter access fly fishing trips. Paddleboard rentals and experiences.

208 Mackenzie Ave | +1.250.683.9548 | [finelinesupandfly.com](http://finelinesupandfly.com)







# REVELSTOKE MOUNTAIN RESORT.

## LEGENDARY POWDER. BIG MOUNTAIN TERRAIN. SMALL TOWN CHARM.

Featuring the longest vertical drop in North America at 5,620 ft (1713 m).



The Resort's Stellar Chair, accessed from the top of the gondola, is the perfect learning zone for both kids and grown-ups. The chair provides access to wide open, mellow grade green runs named Big Bend, Over Easy and Bacon & Eggs. If your legs still have some gusto left, The Last Spike is a long green run spanning the length of the mountain from the top of the Stoke Chair to the Village Base.



RMR has some of the longest highways of corduroy on the planet. Make the top pitches of Snow Rodeo, Feller Buncher, and Wooley Bully your first foray, all of them cross back over the Last Spike if you need to dip out. Switch it up by meandering over to the Ripper Chair, where the grooming's just as delectable and you can segue into some low-angle glades. If those seem easy, dive into Separate Reality off the top of the Stoke Chair.



Everyone's gunning for it on a powder day: North Bowl. Once patrol drops the rope, traverse skier's right from the top of the Stoke Chair for the lower entry points, or bootpack the Lemming Line into the upper chutes, where you'll also find the track over to Gracias Ridge and Greely Bowl. For the highest point on the mountain, take the bootpack straight up to Sub Peak's tight couloirs, or funnel back down Powder Assault into the upper reaches of North Bowl.



### REVELSTOKE MOUNTAIN RESORT LIFT TICKETS

**Buy online and save BIG!**

Pre-purchase your lift tickets online and save big at Revelstoke Mountain Resort! You can also pick up your lift tickets the night before your ski day by using the automated kiosk located outside Guest Services.



2950 Camozzi Rd. | +1.866.373.4754 | [revelstokemountainresort.com](http://revelstokemountainresort.com)



### THE SUTTON PLACE HOTEL

**Slopeside luxury awaits.**

As the only ski-in, ski-out hotel in Revelstoke, The Sutton Place Hotel offers the perfect location to experience winter at its finest. This luxury condominium-style hotel situated in the heart of Revelstoke Mountain Resort features 200 condominium hotel units, ranging from studios to 3-bedroom suites.

2950 Camozzi Rd. | +1.250.814.5000 | [suttonplace.com](http://suttonplace.com)







## REVELSTOKE MOUNTAIN RESORT RENTAL SHOP

*Conditions change, so why shouldn't your gear?*

With a brand new selection of gear available from carvers to fat pow-slayers, we're confident we have the right set-up to suit every condition. If conditions change during your trip, swap out your gear anytime free of charge. Book your rental ski and snowboard equipment online in advance (before 11 pm the day prior) and save up to 20% off our walk-in rates.

2950 Camozzi Rd. | +1.250.814.0087 | [revelstokemtn.com/rent](http://revelstokemtn.com/rent)



## CRITICAL PARTS

*Expert bootfitting services & hardgoods store at Revelstoke Mountain Resort.*

We know that well-fitted gear is critical to success. Here at Critical Parts, our certified bootfitters will do just about anything to keep you shredding first to last chair—pain free! We can punch and grind shells, and build custom footbeds for a perfect fit. Your gear should be the last thing holding you back this winter; come and browse our new collection of skis, boards and boots and get ready to step up your game.

2950 Camozzi Rd. | +1.250.814.0087 | [revelstokemountainresort.com/resort/shopping](http://revelstokemountainresort.com/resort/shopping)



## R GEAR

*Gear up for the cold in style.*

Located in the village plaza at RMR, we offer a huge selection of ski and snowboard soft-goods right at your fingertips. Whether you need that extra mid-layer, a new outerwear setup, or simply want a take-home souvenir, we've got you covered. Come and check out our exciting new collection from Dakine, Arc'teryx, Picture Organic Clothing and more.

2950 Camozzi Rd. | +1.250.814.0087 | [revelstokemountainresort.com/resort/shopping](http://revelstokemountainresort.com/resort/shopping)



## REVELSTOKE MOUNTAIN RESORT SNOW SCHOOL

*Professional, on-mountain ski and snowboard education.*

Our team of certified professionals offer a range of programs to help you and your family make the most of your time on the mountain. Sign kids up for lessons and camps, then reach your own skiing goals through advanced clinics, private lessons or exclusive access to powder or freshly groomed corduroy through the First Tracks program.

2950 Camozzi Rd. | +1.250.814.5060 | [revelstokemtn.com/snow-school](http://revelstokemtn.com/snow-school)



## ROCKFORD BAR & GRILL

*Global flavours & outstanding service at the base of Revelstoke Mountain Resort.*

From juicy CAB steaks to calamari après-ski, you'll find the right dish for every mood and time of day. Pair your meal with wines from BC vineyards, beers from local breweries, or cocktails crafted with spirits made right in Revelstoke. Visit our website to reserve online and order takeout.

2950 Camozzi Rd. | +1.250.837.7160 | [rockfordgrill.com](http://rockfordgrill.com)



## MACKENZIE COMMON TAVERN & FOOD TRUCK

*The ultimate après zone at the base of Revelstoke Mountain Resort.*

Street-style inspired food truck snacks with a local twist, accompanied by local craft beer at the base of Revelstoke Mountain Resort. Join us for a quick lunch, après drinks and a fun welcoming atmosphere.

2950 Camozzi Rd. | +1.250.814.5500 | [revelstokemtn.com/dining](http://revelstokemtn.com/dining)



# HELI & CAT SKIING.

## THE BEST CAT AND HELI SKIING DESTINATION ON THE PLANET.

With two major mountain ranges, a variety of different microclimates and every kind of terrain you can imagine, Revelstoke is the world's mechanized backcountry skiing capital.

Four heli ski companies and three cat ski operations are based out of Revelstoke, with countless other options nearby. You'll have endless powder options when visiting. Make sure you're prepared for an epic ski adventure. Book one day, multi-day, or multi-night stays based out of a number of backcountry lodges or right from town. Go solo and make friends, or bring a group of your own. If you're not sure whether your skis or snowboard are fat enough, fret not, most tours come with powder specific weapons. Be sure to book early; it's a popular pastime!



### SELKIRK TANGIERS HELI SKIING

*Soaring above expectations.*

The snowfall in Revelstoke is the stuff of legends. With over 40 years in the game, you can trust us to fly you to the best of it. With access to over 500,000 acres of untouched wilderness, let us show you the ultimate powder playground.

2100 Oak Drive | +1.800.663.7080 | [selkirk-tangiers.com](http://selkirk-tangiers.com)



### CMH HELI-SKIING & SUMMER ADVENTURES - *Massive vert, bottomless snow and huge terrain. See you there.*

112 First Street East | +1.800.661.0252 | [cmhheli.com](http://cmhheli.com)

### EAGLE PASS HELI - *Small groups. BIG difference. Deep in the Monashees.*

309 Mackenzie Ave | +1.877.929.3337 | [eaglepassheli.com](http://eaglepassheli.com)

### MICA HELISKIING - *Experience the magic.*

207 Mackenzie Ave | +1.877.837.6191 | [micaheli.com](http://micaheli.com)





# YOU'RE IN THE HEART OF HELI-SKIING COUNTRY

Check off your bucket list with a nearby CMH Heli-Skiing experience:



## CMH Purcell

**1, 2 & 3-day trip** options less than two hours East of Revelstoke. 2 guides per group of just 8 people means more time spent skiing and riding. Book today, fly tomorrow.



## CMH Nomads

The ultimate customizable heli-ski experience. Picture this: your own guides, helicopter and private accommodation on a **4 or 5-day trip**. What do you want to ski or ride?



## CMH Revelstoke

Stay downtown Revelstoke and fly into the backcountry each morning to access the goods. **2 to 7-day trips** for first-time heli-skiers to experts looking to step up their freeride game.

CALL US AT **1-800-661-0252** TO  
KICKSTART A LIFELONG OBSESSION

**CMHHELI.COM** #CMHHELI



# BACKCOUNTRY TOURING.

PHOTO: BLAKE JORGENSEN | DESTINATION BC | GLACIER NATIONAL PARK

## THE CAPITAL OF EARNING YOUR TURNS.

There's more Gore-Tex per capita in Revelstoke than anywhere else in Canada. With unequaled access to big mountains and deep snow, this place thrives on a culture of going up to get down.

If you're really new to the sport, hire a local guide. There are tons of amiable mountain maestros ready to safely show you the goods. If you've got the basics under your belt, including an avalanche safety training (AST) course, and you want to venture out into some straightforward terrain, aim for The Fingers on Mount Macpherson. The short laps hold a big payoff in fluffy, open runs you can lap over and over. To get there, park at the Nordic Ski Club Lodge for six dollars and follow the Main Loop to Mountain Climb Trail, then turn left at the sign, take the bridge at the end of the nordic trail.

Want a bit more than the basics? Aim for the terrain surrounding Revelstoke Mountain Resort. The easily accessible backcountry offers everything from deliriously deep trees to complex alpine ridges and couloirs. While many of the runs funnel back inbounds, watch out in the woods; the subalpine turns into a dense jungle around RMR, so be sure you know where you're going and have good communication between partners. If you're unfamiliar with the area, play it safe and hire a guided backcountry tour with the resort.

Rogers Pass in Glacier National Park is a Shangri-La for experienced ski tourers and ski mountaineers. For safety, areas are only open when no avalanche control (using live explosives) is planned. Check daily to know what areas are open. Be sure to get your mandatory winter permit and ensure you know what areas are open. Once you have this figured out, start off on Grizzly Shoulder or Balu Pass, and graduate to the Seven Steps of Paradise - one of the 50 classic ski descents in North America. If you're prepared for glacier travel, the Asulkan and Illecillewaet valleys will lead you into the alpine over rewardingly complex terrain and onto iconic peaks. You can also stay at the Asulkan Hut to break up the slog.

### SKIING ROGERS PASS IN GLACIER NATIONAL PARK?

**Live explosives are used for highway avalanche control. Stay out of the line of fire!**

The Winter Permit System allows Parks Canada to open some backcountry slopes within Rogers Pass for recreation when avalanche control is not planned. From Nov. – April, get your permit and check DAILY to know which areas are open.



**LEARN IT  
GET YOUR  
PERMIT**

**VISIT [PC.GC.CA/SKIROGERS](http://PC.GC.CA/SKIROGERS)**



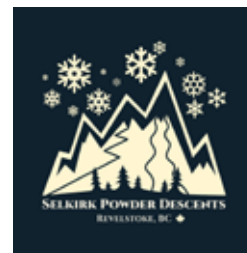


## SELKIRK POWDER DESCENTS

*Specializing in guided backcountry ski touring trips.*

A small, independent, family run operation with over 20 years of ski touring experience in the Revelstoke backcountry. We offer ski touring trips daily in Revelstoke's Backcountry and Rogers Pass, Backcountry Lodge trips and Ski Mountaineering Basecamps. All trips are led by fully certified ACMG Guides. Join our family of happy skiers!

info@selkirkpowderdescents.com | +1.250.837.1684 | selkirkpowderdescents.com



## REVV OUTDOORS OUTFITTERS

*Gear, clothing, footwear and accessories for camping, hiking, back-packing, climbing, mountaineering, skiing, shredding and more.*

Big mountain skiing and hiking demands a complete kit. We can outfit you properly with the skis, bindings, boots, and clothing that works - and save you money to boot. You can also pick up your copy of Backcountry Skiing in Rogers Pass, both map and book. Drop by for a chat and an espresso on us, or shop online at revvyoutdoors.com.

Downtown 201 Mackenzie Ave. | +1.250.814.2575 | revvyoutdoors.com



## POWDER RENTALS

*Revelstoke's premiere rental shop.*

We have Revelstoke's largest selection of touring skis, splitboards, and avalanche gear. Open daily from 7:30 am - 8 pm. Get set up the night before so you can get going earlier in the morning. Rent the latest skis and boards from Rossignol, Salomon, Black Crows, Icelantic, Line, Jones, Lib-Tech, Capita, YES, Gnu and Burton. Overnight tuning available.

709 Victoria Rd. | +1.250.814.4769 | revelstokepowderrentals.com



## FREE SPIRIT SPORTS

*Want the best backcountry gear and advice in Revelstoke?*

We've been providing top quality gear and advice to locals and visitors since 1992. Our staff and shop athletes are out there testing the gear we sell so we can give you the best service possible. Come and see us for your avalanche safety gear, splitboard setup, ski & boarding clothing and more! Check out our new online shopping too.

201 First St W | +1.250.837.9453 | freespiritsports.com



## AVALANCHE CANADA

*The home of public avalanche safety in Canada.*

Avalanche Canada is a non-government, not-for-profit organization dedicated to public avalanche safety. They issue daily avalanche forecasts throughout the winter for much of the mountainous regions of western Canada, providing this free information via their website and their app, Avalanche Canada Mobile. Before heading out into the backcountry, ensure that you are equipped with a transceiver, shovel, and probe and that you have the skills to use them. It is essential that you check and understand the avalanche forecast. You need to know the avalanche ratings for the area you plan to ski as well as any potential dangers in the snowpack. Take note of changing weather and its potential impact on conditions.

+1.250.837.2141  
avalanche.ca





# SNOWMOBILING.

## WELCOME TO THE EPICENTRE OF CANADIAN MOUNTAIN SLEDDING.

From November to May, Revelstoke gets between 15m to 18m (50ft to 60ft) of snow in the most accessible big-mountain terrain that exists.

Pick up the basics and have someone else safely handle the route by booking a tour with a certified guide via a local operator. Choose your adventure, from a 1-hour tour on nicely groomed trails to a half-day experiencing powder riding or getting farther to higher views. Ride single or with a partner as you safely venture farther out into the winter wilderness than you've ever been before.

Have avalanche equipment, know how to use it and make sure you've checked [Avalanche.ca](http://Avalanche.ca) for the bulletin. After you do, make it over to the groomed access at Boulder and Frisby Mountains that'll shepherd you comfortably into the alpine. Remember, a steady throttle keeps the trails in better shape because nobody likes riding woops. Pay attention to the trail fees for grooming; stop by the Snowmobile Club Welcome Centre for more information.

If you want to rent a machine or hone your skills, there are several options in town for rentals and multi-day clinics.

If you already have ninja status and just want to get kicking, aim for the expansive open ridgetops, basins and face shots waiting for you on Sale Mountain or Keystone-Standard Basin to the north. There's also Mount Hall to the south. Respect seasonal and permanent caribou closures—they're for real!

Find out more about riding areas, caribou closures and respecting our backcountry at [revelstokesnowmobileclub.com](http://revelstokesnowmobileclub.com). The Club has been in existence since 1968, and works hard to advocate for our snowmobile areas. Reach out to find out how you can support them.

**Snowmobile map and guide:** Pick up yours for free from the Revelstoke Visitor Information Centre or at the Boulder Mountain Welcome Centre at 4177 Westside Rd.



**ALWAYS CHECK AVALANCHE CONDITIONS  
BEFORE HEADING OUT:** [www.avalanche.ca](http://www.avalanche.ca)

Ensure that you are prepared with adequate maps and area knowledge. Be prepared to be out of cell service and in the backcountry.

### GREAT CANADIAN TOURS AND FULL SPEED RENTALS

#### *The Sledder's Basecamp.*

Snowmobile from each location onto the trails, connecting you to Boulder, Turtle and Frisby Mountains. Great Canadian Tours has the largest tenure in North America, offering you the best guided experiences in the area. Full Speed Rentals has the latest Skidoo, Polaris and Lynx snowmobiles, plus Yamaha snow bikes for rent. With fuel, parts and apparel all on site and the best mechanics in the industry, Full Speed is the best one stop shop for sledders.

+1.250.837.5030 | [riderevelstoke.ca](http://riderevelstoke.ca) | +1.250.837.8883 | [fullspeedrentals.com](http://fullspeedrentals.com)







### **BOULDER MOUNTAIN RESORT (OPEN YEAR-ROUND)**

*Unique Luxury, Rustic & Log Cabins. Suites, RV Sites, Glamping Tents, Geo Domes, and forested camping.*

*We are located 3.5km west of Revelstoke, on Highway #1.*

*We are Revelstoke's Ultimate Post for Fun with direct access to the Boulder and Frisby trail head, with some of North America's best snowmobile, ATV, hiking and biking trails.*

**3069 Trans Canada Highway - Revelstoke, BC. +1.250.837.4420 | [bouldermountainresort.ca](http://bouldermountainresort.ca)**



### **REVELSTOKE SNOWMOBILE CLUB**

*One of Canada's oldest and largest clubs.*

Revelstoke Snowmobile Club grooms a 100km trail system on Boulder Mountain and Frisby Ridge. Both areas are managed and have a pay-to-use system. Ride with a Daily Trail Pass for \$25 or purchase a yearly membership via our website. All fees go towards supporting the Snowmobile Club, an important part of Revelstoke's community since 1968.

The Club is delivering a world class snowmobile experience for our Club members and guest riders by offering the highest quality trails and warmup shelter while promoting safe and responsible use of the backcountry.

**4177 Westside Rd.**

**+1.250.837.3325**

**[revelstokesnowmobileclub.com](http://revelstokesnowmobileclub.com)**



**REVELSTOKE  
SNOWMOBILE  
CLUB**





# NORDIC SKIING & SNOWSHOEING.

## 30 KM (19 MI) OF IMPECCABLY GROOMED TRAILS AT MOUNT MACPHERSON.

The Nordic Centre also includes 6 km (3.75 mi) of lit trails for night time looping, and snowshoe trails. Take the Resort Shuttle to the Nordic Centre on weekends.

**XC Skiing:** Begin at the beautiful Mount Macpherson Nordic Lodge and follow the Mickey Olsen Loop. Connect with Evelyn's Choice and Glen's Glide to extend your fun, quick and easy ski.

**Snowshoeing:** Start with a guided tour around Revelstoke Mountain Resort with the Revelstoke Snowshoe Company. Next, park at the gate of Mount Revelstoke National Park and head into Inspiration Woods, or the Soren Sorensen loops. The Revelstoke Nordic Ski Club area also has a designated snowshoe trail called Seven Bridges.

**Nordic Skiing & Snowshoeing map and guide:** Pick up yours for free from the Revelstoke Visitor Information Centre.

**XC Skiing:** Grab your pup and chase them around the popular 5km dog loop at the Revelstoke Nordic Ski Club Centre. Well-mannered dog owners and dogs only; and please leash up in designated areas and remember to pick up after your dog! After Rex is tucked out, let him rest back at the car as you continue around the perimeter loop.

**Snowshoeing:** Seek out Begbie Falls even in the winter by parking at the beginning of Begbie Falls Forest Service Road, right where the plowed road ends. Follow the trail about 2.5km to the falls. For Sutherland Falls, park at the Blanket Creek Provincial Park gate (without blocking it) and head down the road for 2.5km through snow-draped cedars and hemlock.

**XC Skiing:** Show up after dark and ski 6km (3.75 mi) of newly lit trails in the brisk calm of night. Slide farther afield with a headlamp and you can have a picnic dinner at the Ole Sandberg Cabin via the Main Loop. If you want to really crush your workout, add on Hydro Hill.

**Snowshoeing:** Be aware of avalanche terrain and conditions, go to [Avalanche.ca](http://Avalanche.ca) for more info. Next, take Mount Revelstoke National Park's Summit Trail to the Monashee Picnic Shelter, beginning at the Nels Nelsen Historic Area. The shelter is 3km uphill from here, mostly under the cover of an evergreen canopy.

**ALWAYS CHECK AVALANCHE CONDITIONS BEFORE HEADING OUT:** [www.avalanche.ca](http://www.avalanche.ca)



### REVVY OUTDOORS OUTFITTERS

**Gear, clothing, footwear and accessories for cross-country skiing and snowshoeing.**

Gear, clothing, footwear and accessories for cross-country skiing and snowshoeing. Alpina and Kastle skis and boots, including both skate and traditional styles. Clothing by Daehlie, Kari Traa, Montane, and Marmot plus all the accessories you need. Drop by for a chat and a hot chocolate on us, or shop on-line at [revvyoutdoors.com](http://revvyoutdoors.com)

Downtown 201 Mackenzie Ave. | +1.250.814.2575 | [revvyoutdoors.com](http://revvyoutdoors.com)



**REVELSTOKE NORDIC SKI CLUB - One of the oldest ski clubs in Canada.**

[revelstokenordic.org](http://revelstokenordic.org) | [info@revelstokenordic.org](mailto:info@revelstokenordic.org) | +1.250.814.4264





PHOTO: LIA HOUGHTON | MACKENZIE AVENUE

## VIBRANT, HISTORIC DOWNTOWN REVELSTOKE.

Locally owned and operated specialty stores and restaurants  
to meet your every need and more.

Revelstoke's commercial character echoes its culture with a focus on health, wellness, recreation and the environment. You can shop for your business outfit or Gore-Tex within a few feet, discover local artists, find a smart shoe selection, rent a bike, buy a camping stove, peruse splitboards, book an adventure or buy a new book. Not to mention the variety of eats. Stock up on ethically sourced self-styling products at a salon, or just lay back and enjoy the spa experience. Several storefronts showcase local arts, crafts and jewelry, which you'll also find in spades at the farmers' markets between May and October. Since its Victorian revitalization in 1986, Revelstoke's historic buildings and heritage are on proud display. To learn more about Revelstoke's history, go to the Revelstoke Museum & Archives website to find details on heritage walking tours and more.



### ART ALLERIES

#### *Revelstoke's outdoor art galleries.*

Don't miss the local art that brings a bit of whimsy to Revelstoke's downtown alleys. Local and visiting artists have created stunning permanent displays to brighten our alleys. Look for the iconic "Mona Skisa", a Mona Lisa-esque work made of repurposed skis by Rob Buchanan. Pose with "I Hugged a Bear in Revelstoke" by local designer Turbo Bambi. Take in the stunning colours of "Coming Home" by Ric Gendron (pictured).

[lunafest.ca/web/art-alleries-2021](http://lunafest.ca/web/art-alleries-2021)

### **CENTURY 21 EXECUTIVES REALTY LTD. - Full service real estate agency.**

101 - A 2nd Street E. | +1.236.221.7389 | [c21revelstoke.com](http://c21revelstoke.com)

### **CHEERS LIQUOR STORES - Cold beer, wine and spirits delivered right to your door, 11AM to 11PM!**

105 Victoria Rd E & 1925 Laforme | +1.250.837.4550 | [cheersliquor.ca](http://cheersliquor.ca)

### **REVV OUTDOORS OUTFITTERS - Your camp, hike, ski outfitter. Gear, clothing, footwear and more. Top brands; great value!**

201 Mackenzie Ave. | +1.250.814.2575 | [info@revvyoutdoors.com](mailto:info@revvyoutdoors.com)



# FAMILY FUN.

## DISCOVER WHY REVELSTOKE IS CANADA'S REAL WONDERLAND.

From the beach to the park, the mountain coaster to the trails, people of all ages can get amongst it.

**Summer:** On a hot day, hit the local swimming hole at Williamson Lake or visit our Splash Park. West of town there's the Enchanted Forest, the 3 Valley Gap Ghost Town, or SkyTrek Adventure Park—a fantasy land of tree-top bridge and ladder works with zip lines that'll get your grownup heart pounding, too.

**Winter:** Come out of your shell at Revelstoke Mountain Resort's Turtle Creek where there's a magic carpet for new skiers. You can also make waves at the Revelstoke Aquatic Centre.

**Summer:** Mount Revelstoke National Park is prime for family time. You can drive right to the top and have a picnic in perfect alpine wilderness. When you come back down, take an afternoon snack to the meandering shoreline of Martha Creek Provincial Park on Lake Revelstoke. Its warm waters and wide-open grassy playing fields are just a quick 15 minute drive up Highway 23 North.

**Winter:** If you're into starry nights and have a headlamp, you can also rent a pair of snowshoes and wander along Revelstoke's Greenbelt River Trails. Or stay inside and cheer on the Revelstoke Grizzlies at a local hockey game.

**Summer:** Drop in on Revelstoke Mountain Resort's Pipe Mountain Coaster which is always the smash hit of summer. Dash through open forest on a self-controlled roller coaster. While you're there, be sure to swing, climb, and free fall your way through the Aerial Adventure Park, a four-storey ropes course and Revelstoke's newest family attraction. If you want to take the family adventure to two wheels, head to Mount Macpherson's mountain bike trails.

**Winter:** Pack a thermos of hot chocolate to the Ole Sandberg Cabin at the Mount Macpherson Nordic trails.



### THE PIPE MOUNTAIN COASTER

*Revelstoke's #1 summer attraction.*

Travel up to 42 kilometres per hour along 1.4km of twists and turns across ski runs, between glades and through a tunnel. This family-friendly ride allows you to control your own speed, making it ideal for people of all ages.

2950 Camozzi Road | +1.866.373.4754 | [revelstokemountainresort.com](http://revelstokemountainresort.com)



### REVELSTUCK ESCAPE ROOMS - *Wouldn't you rather be Revelstuck?*

4 - 1605 Victoria Rd | +1.250.805.0599 | [revelstuckescape.com](http://revelstuckescape.com)





## THE ENCHANTED FOREST & SKYTREK ADVENTURE PARK

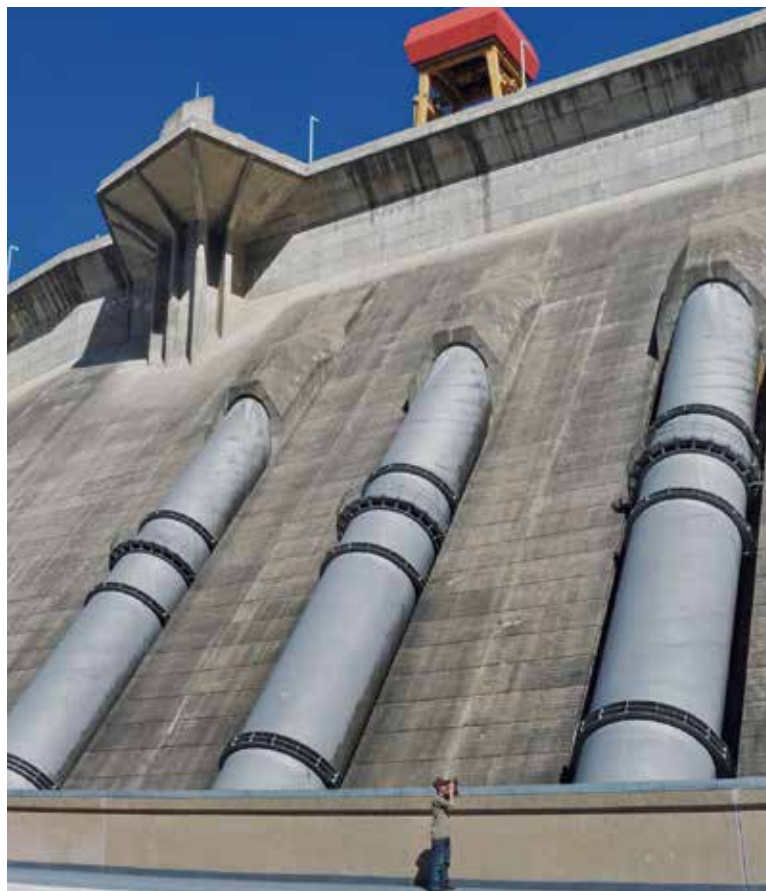
*Two must-visit parks. One location. Fun for everyone!*

**The Enchanted Forest** has been a delight for the young and young at heart for over 60 years! Canada's tallest treehouse, over 350 handmade fairytale figurines, and a trove of other treasures are waiting to be discovered amongst a lush, old growth rainforest in the heart of the Monashee Mountains. Magic and wonder for all, including pets on leash!

**Skytrek Adventure Park** has exhilarating fun for all ages, from toddlers to grandparents! Zip, climb, balance, and jump your way through our collection of unique courses, all in the magnificent treetops. Grab your partner and try out the new Sky Lines tandem zip line course! Nestled in the shade of the lush forest that surrounds us, we're open seasonally 7 days a week, rain or shine.

32km West of Revelstoke on Highway 1

+1.250.837.9477 | [enchantedforestbc.com](http://enchantedforestbc.com) | [skytrekadventurepark.com](http://skytrekadventurepark.com)



## Visit the Revelstoke Dam Visitor Centre to see how our province is powered by water.

Get ready for an elevator ride to the top of our 175-meter dam, enjoy interactive displays and learn how power is made.

Explore our Visitor Centre on a guided or self guided tour. Audio tour rentals are also available in multiple languages.

Visit [bchydro.com/revelstoke](http://bchydro.com/revelstoke) for more information.

Admission charges apply.

 **BC Hydro**  
Power smart

CS-2510

# FOOD & DRINK.

## A FOOD SCENE TO SAVOUR, WITH SOMETHING FOR EVERY PALATE.

Café your way through the day,  
après your way into the night.

Grab a healthy and affordable breakfast or a wrap for the trail at one of Revelstoke's many wholesome cafés. If you want to have a leisurely morning, sit down for a full breakfast or even wait for brunch in one of our favorite restaurants. From there, lunch and dinner options extend into an impressive array of world cuisines: Japanese, German, Thai, Chinese, Latin American, Indian, French, and fusion. If you want to keep it simple, find a warm seat in a classic pub with menus serving everything from vegetarian fare to burgers. Looking for a fancy night out? We've got a number of sophisticated dining spots that serve haute cuisine in style. Wash it all down with a frosty pint of local beer or get a locally distilled cocktail at one of our breweries or distilleries in town.

Futhermore, in Revelstoke, we are lucky to have several farmers and artisan makers who supply our community with fresh, locally grown food. Fresh vegetables, locally processed meat, and even fresh cut flowers are some of what's available from producers in Revelstoke. Many local restaurants showcase 'farm-to-table' menus, reducing their environmental impact and giving you tastier, healthier food.



### PARAMJIT'S KITCHEN

*Non- Traditional German, Indian, and Fusion Cuisine*

Come experience a culinary adventure of non-traditional German, Indian, and Thai food. Can't decide, why not try our butter chickenschnitzel or one of our other wonderful fusion dishes. A local favourite since 2009, the perfect end to your day of adventure.

116 1st St W | +1.250.837.2112 | pamskitchen.ca







PHOTO: KERI KNAPP | RUMPLUS BEER COMPANY

## PASSIONATE CREATORS OF PREMIUM BEVERAGES, RIGHT HERE IN REVY.

There's no better way to après than  
enjoying a locally crafted spirit or brew.

Revelstoke is home to some of the finest craft beers and spirits in the region, all made right here in town by local experts. Whether you're looking for a craft twist on a favourite drink or something new and exciting, our craft brewers and distillers have something for you! Check out Mt. Begbie Brewing, which has been in Revelstoke for over 25 years. Rumpus Beer Company is a great spot to enjoy a tasting flight downtown. Try a unique cocktail at Monashee Spirits' cozy and sophisticated space. Try small batch spirits from Jones Distilling.

### THE BC ALE TRAIL - *New experiences are brewing nearby.*

BC has an innovative and flourishing craft brewing scene, dating back to 1882. An array of world-class breweries are waiting to be discovered amid British Columbia's spectacular wilderness and scenery, along with a wide range of outdoor activities and urban experiences. [bcaletrail.ca](http://bcaletrail.ca)



**CLASSIC.  
AWARD WINNING  
SINCE 1996.**

4	68
Be	Er
9.01	147.26



Mt. Begbie Brewing Co.  
2156 Oak Drive  
Revelstoke, BC V0E 2S0



# REVELSTOKE.

## DINING & DRINKS



### 112 Restaurant & Lounge

Established in 1978, the Regent Hotel's 112 Restaurant & Lounge has long been one of the most refined and highly reviewed restaurants in the area.

+1.250.837.2107 | 112 First St E  
112restaurant.ca



### Begbie Room at The Hillcrest

The Begbie Room offers fresh ingredients, welcoming service, and breathtaking views of the Selkirk and Monashee Mountains. Evening dining features international and continental cuisine.

+1.250.837.3322 | 2100 Oak Dr  
hillcresthotel.com



### Dose Coffee

A community hub in the heart of downtown. Serving up specialty coffee, breakfast, lunch and homemade baked treats in a welcoming and inspiring atmosphere.

+1.250.837.6215 | 101 Second St E  
dosecoffee.ca



### Emo's Restaurant

At Emo's Restaurant, we cater to every member of your family, serving up everything from chicken fingers for the kiddies to BC salmon for the adults. We want every meal you share with us to be a good one, and every visit to be a pleasant experience.

+1.250.837.6443 | 418 First St W  
emosrestaurant.ca



### Old School Eatery

A new school twist on old school classics...what we are calling sophisticated comfort food. Old School is a fun and casual dining experience in a 100 year old heritage schoolhouse. Serving brunch and dinner!

+1.250.814.4144 | 616 3rd St W  
oldschooleatery.ca



### Paramjit's Kitchen

Our Head Chef and founder, Goldie Sanghera, had an idea to create a restaurant that was more than a place that served great food. Paramjit's Kitchen serves delicious Indian, German and Thai cuisine in a relaxed venue.

+1.250.837.2112 | 116 First St W  
pamskitchen.ca



### Quartermaster Eatery

We believe in eating good food. Through working with small local farms, boutique ranchers, and wild/sustainable fisheries, we create innovative takes on timeless cuisine for the modern diner.

+1.250.814.2565 | 109 1st St W  
explorers-society.com/eat-drink



### River City Pub & Patio

For a friendly gathering over cold pints and juicy burgers, this is the place to unwind and watch the game. Relive that epic day on the mountain or just kick back after a hard day's work.

+1.250.837.2107 | 112 First St E  
rivercitypub.ca



### Dining at Halcyon Hot Springs

Open year-round for breakfast, lunch and dinner, enjoy high-end casual dining with a spectacular view at Halcyon Hot Springs. Our restaurant is one of BC's finest hot springs dining experiences.

+1.250.265.3554 | 5655 Hwy 23, Nakusp  
halcyon-hotsprings.com



### The Modern Bakeshop & Cafe

The Mod Squad are devoted to bringing you old-fashioned, hand-crafted food and drink using delicious local and organic ingredients. We have a selection of gluten free, vegan, non-dairy and other diet options.

+1.250.837.6886 | 212 Mackenzie Ave  
themodernbakeshopandcafe.com



### The Taco Club

Celebrate life in the mountains with signature cocktails and our curated tequila menu, or bring a group for a round of tacos and local craft beer. Our menu features something for every palate, and is designed to please a wide variety of dietary requirements.

+1.250.837.0988 | 206 Mackenzie Ave  
thetacoclub.ca



### Woolsey Creek Bistro

By exploring flavors and ingredients from around the world while striving to support the farmers of British Columbia, we give the community an opportunity to enjoy a sustainable dining experience.

+1.250.837.5500 | 604 Second St W  
woolseycreekbistro.ca





### Kawakubo Sushi

Offering fresh, authentic Japanese cuisine including sushi, tempura and teriyaki. Delicious meals prepared by master chefs and served right in the heart of Revelstoke.

+1.250.837.2467 | 109 First St E  
kawakubo-revelstoke.com



### Mackenzie Tavern & Food Truck

Street-style inspired food truck snacks with a local twist, accompanied by local craft beer at the base of Revelstoke Mountain Resort. Join us for a quick lunch, après drinks and a fun welcoming atmosphere.

+1.250.814.5500 | 2950 Camozzi Rd  
revelstokemtn.com/dining



### Main Street Cafe

Serving home-style breakfasts and lunches, weekend eggs benny, and a full breakfast menu. Wraps, fresh salads, specialty sandwiches, homemade soups, gourmet coffee and fresh baked desserts.

+1.250.837.6888 | 317 Mackenzie Ave  
mainstcafevy.com



### Nico's Pizzeria

From extra-thin to thin to Neapolitan crust, every pizza is cooked right on the stone. From our homemade fresh pasta to our extraordinary chicken wings, Nico's has been serving Revelstoke's best pizza for years.

+1.250.837.7117 | 112 First St W  
nicospizzeria.ca



### OLD SCHOOL EATERY

*Sophisticated comfort food.*

A new school twist on old school classics. A fun casual dining experience in a 100 year old heritage schoolhouse. Open for brunch and dinner!

616 3rd St W | +1.250.814.4144 | oldschooleatery.ca



### THE TACO CLUB

*A club for those partial to tacos.*

Vibrant venue for Latin style street food serving seasonal tacos, burritos, enchiladas and tequila focused cocktails. Our menu consists of traditional and fusion flavour profiles that put unique spins on your favourite Mexican dishes. A Revelstoke institution founded by ski bums making tacos out of a pink postal van. Come check us out at 206 Mackenzie Ave, downtown Revelstoke!

206 MacKenzie Ave | +1.250.837.0988 | thetacoclub.ca



# REVELSTOKE.

## ACCOMMODATION

BOOK YOUR ACCOMMODATION ON OUR WEBSITE:  
[www.SeeRevelstoke.com](http://www.SeeRevelstoke.com)



### COAST HILLCREST HOTEL

*Home of Selkirk Tangiers Heli-Skiing.*

Escape to the Hillcrest Hotel, where you can unwind with a true resort experience. First class cuisine, exceptional views, and an afternoon relaxing at the Serenity Spa are just a few of the things we offer to provide you with a truly memorable vacation. Plan your next visit or family reunion with us and relax while we take care of the details.

2100 Oak Dr | +1.250.837.3322 | [hillcresthotel.com](http://hillcresthotel.com)



### SANDMAN HOTEL REVELSTOKE

*Always the smart choice.*

There are many reasons to stay at Sandman Hotel Revelstoke: Suites and kitchenettes available, complimentary high speed Internet, two indoor pools & whirlpools, complimentary parking, Denny's 24 Hour Restaurant with room service, Bar One, fitness facilities, business centre, and lift & lodging packages available.

1901 Laforme Blvd. | +1.250.837.5271 | [sandmanhotels.com](http://sandmanhotels.com)





# Regent Hotel

## REVELSTOKE



# R

RIVER CITY PUB

Revelstoke's most iconic bar, since 1932. Gourmet hand pressed burgers & local beers on tap

ONE TWELVE

112

RESTAURANT

Handcrafted cocktails, excellent wine & dine. Enjoy casual elegance in downtown Revelstoke.

# C

CHEERS  
LIQUOR STORES

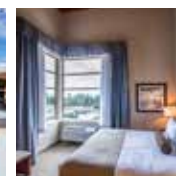
Chilled beer, wine and spirits located next door to the Regent Hotel.

112 FIRST STREET EAST | 250.837.2107 | REGENTHOTEL.CA

1925 Laforme Blvd. Revelstoke, BC  
off the Trans Canada Highway



**BW**  
Best  
Western  
**PLUS**



BOOK DIRECT

1.855.837.2043 | [RevelstokeBestWestern.com](http://RevelstokeBestWestern.com)

Every Best Western branded hotel is independently owned and operated.



# HOTELS & RESORTS



## Basecamp Revelstoke

32 Units

Basecamp Revelstoke offers boutique suites situated just outside of Downtown Revelstoke, overlooking the Columbia River and only a 15 minute shuttle ride to Revelstoke Mountain Resort. Designed for families, avid adventure seekers and powder junkies alike, we provide epic views, top notch service and all of the comforts of home along with a bounty of natural splendors right at our doorstep.



- Contact-free check in
- Mountain and River view suites
- Outdoor hot tubs (open year-round)
- Complimentary wireless internet
- Flat screen LED TV w/ Telus Optik TV
- Full kitchens, dining & living room area
- One free parking stall per apartment
- Room for a trailer
- Microwave, toaster, kettle, fresh coffee
- Pots & pans, BBQ set, dishes/cutlery
- Complimentary seasonal shuttle service
- Ensuite washer and dryer
- Pet-friendly rooms available
- Black out shades in bedrooms

405 Highway 23 North | +1.855.219.4707 | [basecampresorts.com](http://basecampresorts.com) | [revelstoke@basecampresorts.com](mailto:revelstoke@basecampresorts.com)



## Best Western PLUS Revelstoke

87 Rooms

Located off the Trans-Canada Highway (Highway #1), we are minutes away from world class skiing, snowmobiling, mountain biking, golfing, and hiking. Our modern hotel offers ample amenities including mountain view rooms, free hot breakfast, outdoor hot tubs, and a seasonal pool.



- Free WiFi
- Business centre
- Free hot breakfast
- Hot tubs and seasonal pool
- Mountain views
- Wheelchair access
- In-room coffee, fridge & microwave
- HD Telus Optik TV with 50" flat screen TVs
- Pet-friendly rooms
- Seasonal free shuttle to the 112 Restaurant
- Fitness centre
- Complimentary guest laundry
- On-site liquor store
- In-room safe
- Free parking

1925 Laforme Blvd | +1.250.837.2043 | +1.855.837.2043 | [revelstokebestwestern.com](http://revelstokebestwestern.com) | [info@revelstokebestwestern.com](mailto:info@revelstokebestwestern.com)



## Bison Lodge

6 Rooms

Welcome to the ultimate Canadian luxury mountainside lodging experience! Located steps above the base of Revelstoke Mountain Resort in Revelstoke, British Columbia.



- Full lodge rental only
- Private chef dining
- Beer & wine on-tap
- Gym
- Wet bar / games room
- Private wine collection
- Full service
- Mountain / river views
- Free shuttle
- Theatre Room
- Complimentary massages
- Hot tub & sauna
- Free WiFi
- Ski in / out
- Heli packages
- Ski / golf & stay packages

2080 Mackenzie Court, #3 | +1.877.271.4217 | [revelstokebisonlodge.com](http://revelstokebisonlodge.com) | [info@revelstokebisonlodge.com](mailto:info@revelstokebisonlodge.com)



## Coast Hillcrest Hotel

75 Rooms

Coast Hillcrest Hotel is the gateway to adventure. Our comfortable accommodations offer incredible mountain views. Only 3km from downtown Revelstoke, the resort is conveniently located near Mount Revelstoke & Glacier National Parks and Revelstoke Mountain Resort.



- Free WiFi
- Telus Optik TV
- Exercise room
- Non-smoking rooms
- Golf, ski and snowmobile rates
- In-room coffee and fridge
- Indoor & outdoor hot tubs
- Restaurant, lounge, and room service
- Pets welcome
- Wheelchair access
- Snowmobile parking
- Serenity Day Spa

2100 Oak Dr | +1.250.837.3322 | +1.800.663.1144 | [hillcresthotel.com](http://hillcresthotel.com) | [info@hillcresthotel.com](mailto:info@hillcresthotel.com)





## Courthouse Inn

10 Rooms

Located just a few blocks away from downtown Revelstoke, the Courthouse Inn offers timeless comfort in a warm and relaxing atmosphere. Surrounded by historic landmarks and breathtaking views, our rustic Canadian décor, unique antiques and hand-crafted furniture combined with our 3 course gourmet breakfast and our dedication to service excellence are sure to provide you with the height of comfort during your stay.

- Smart TVs and free WiFi
- In-room coffee
- 3 course gourmet breakfast
- Boot dryer

- Walking distance to downtown
- Secure ski/bike storage
- Steps away from resort shuttle
- Air conditioning

- No pets
- Parking lot

**COURTHOUSE INN**  
REVELSTOKE, BC

312 Kootenay St | +1.250.837.3369 | +1.877.837.3369 | [courthouseinnrevelstoke.com](http://courthouseinnrevelstoke.com) | [info@courthouseinnrevelstoke.com](mailto:info@courthouseinnrevelstoke.com)



## Glacier House Resort

16 Rms | 10 Cabins

Step out to adventure! Ideally located at the trailhead of Frisby Ridge for your mountain vacation, whether you are looking for peace and tranquility, or adrenalin fueled activity. The perfect combination of deluxe accommodation and warm, friendly service. Enjoy our spacious fireplace lodge rooms and cozy log cabins. Stunning mountain views, just 10km from town!

- Spacious lodge rooms
- Fridges and microwaves
- Select rooms are dog friendly
- Free WiFi
- Indoor pool, hot tub & sauna

- Newly renovated cabins
- Kitchenettes and BBQs
- Private hot tubs
- Climatized heating & A/C
- Ride from cabin to the Ridge

- Gallery Restaurant & Bootlegger Bar
- HD Telus Optik TV
- Hiking, biking & dirt biking trails
- Snowmobile from your door
- Fuel on site

  
**GLACIER HOUSE**  
RESORT

1870 Glacier Ln | +1.250.837.9594 | +1.877.837.9594 | [glacierhouse.com](http://glacierhouse.com) | [info@glacierhouse.com](mailto:info@glacierhouse.com)



## Fairfield Inn & Suites Revelstoke

87 Rooms

Wake up to incredible views of glacier-capped mountains when at Fairfield Inn & Suites Revelstoke. Our hotel is conveniently located on Hwy 1 and is within walking distance of great restaurants, cafes and is a short drive to Revelstoke Mountain Resort. Recharge in our outdoor hot tub and fitness room. Start your day in Revelstoke with our hotel's complimentary breakfast. Our hotel rooms feature flat-screen TVs, pillow top mattresses and high-speed Wi-Fi.

- Free WiFi
- Amenities nearby
- Business centre
- Free parking
- Non-smoking hotel

- Free hot breakfast
- Fitness centre
- Fridge and microwave
- Wheelchair accessible
- 24-hour reception desk

- Outdoor hot tub
- Laundry facilities
- Sundries/mart
- In-room entertainment

**Fairfield**  
BY MARRIOTT

1730 Trans Canada Highway | +1.888.236.2427 | [marriott.com/hotels/travel/yrvfi-fairfield-inn-and-suites-revelstoke/](http://marriott.com/hotels/travel/yrvfi-fairfield-inn-and-suites-revelstoke/)



## Grizz Hotel

56 Rooms

Quaint hotel located in the heart of downtown Revelstoke with a bustling pub attached. Family-friendly environment with affordable prices! Friendly and enthusiastic staff will be more than willing to assist you. New washrooms and beds with high quality linens will provide you a warm and comfortable stay!

- Free WiFi
- Seasonal rates
- Family suite with kitchen
- Air con & heating
- Free fresh coffee

- Telus Optik TV
- Non-smoking rooms
- Free parking
- Restaurant and Pub
- Laundry facilities

- Front desk 8am to 12am
- Newly renovated
- Free seasonal mountain resort shuttle
- Seasonal patio
- Downtown location

  
**GRIZZ HOTEL**

200 3rd St W | +1.250.837.5151 | +1.800.991.4455 | [grizzhotel.com](http://grizzhotel.com) | [grizzhotel@gmail.com](mailto:grizzhotel@gmail.com)

# HOTELS & RESORTS



## Ramada by Wyndham Revelstoke

85 Rooms

**RAMADA**  
BY WYNDHAM

Rise and shine to a free deluxe continental breakfast which includes healthy options. Keep your wardrobe crisp in our laundromat, workout in the fitness center, or work in the business center. Dive into our swimming pool and zoom down our waterslide or decompress in our hot tub. Each of our guest rooms feature a flat-screen HDTV, microwave, mini-refrigerator, coffee and tea maker, work space and air-conditioning.

- Free WiFi
- Amenities nearby
- Indoor pool & waterslide
- Business centre
- Meeting rooms
- Free parking & EV stations
- Fitness centre
- Non-smoking hotel
- Free hot breakfast
- Fridge & microwave
- Hot tub
- Laundry facilities
- Sundries/mart
- 24-hour reception desk
- In-room safes

1750 Trans Canada Hwy | +1.250.837.4741 | wyndhamhotels.com/ramada | info@ramadarevelstoke.com



## Regent Hotel

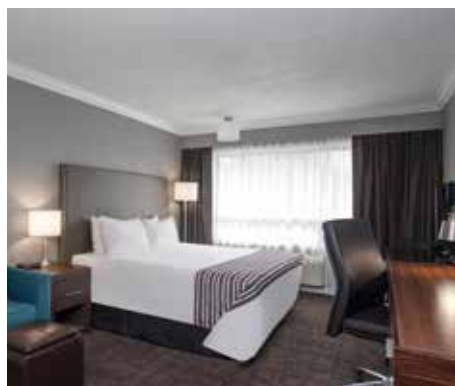
45 Rooms

*Regent Hotel*

Located in the heart of historic downtown Revelstoke, we are Revelstoke's leader in accommodation, dining and service. This family owned and operated heritage hotel reflects the warmth and character of this mountain town community.

- Free WiFi
- High definition Optik TV
- Exercise room
- Business centre
- Mountain views
- Pets welcome
- Meeting rooms
- Non-smoking rooms
- Hot tub
- Sauna
- 112 Restaurant & Lounge
- River City Pub & Patio
- Free parking

112 1st St E | +1.250.837.2107 | +1.888.245.5523 | regenthotel.ca | info@regenthotel.ca



## Sandman Hotel Revelstoke

173 Rooms

**Sandman**  
HOTELS | INNS | SUITES

Flanked by the awe-inspiring Monashee and Selkirk Mountains, we are centrally located with easy access to Highway 1 and minutes away from Revelstoke Mountain Resort. Featuring convenient amenities such as cozy beds, indoor pools, hot tubs, and a Denny's Restaurant with room service, you'll find everything you need at Sandman.

- Free WiFi
- Free parking
- Bar One
- Denny's Restaurant - 24 hrs
- Room service available
- Ski & stay packages
- Snowmobile parking
- 2 Indoor pools & whirlpools
- Fitness facilities
- Kitchen suites
- Laundry facilities
- In-room coffee, fridge & microwave
- Wheelchair access
- Pet friendly
- Non-smoking rooms

1901 Laforme Blvd | +1.250.837.6161 | +1.800.SANDMAN | sandmanhotels.ca | reservations@sandman.ca



## Stoke Hotel SureStay Collection by Best Western

61 Rooms

**STOKE**  
HOTEL

The Stoke is a funky boutique hotel that throws boring convention out the window. We connect our physical space to the surrounding Canadian Kootenay wilderness through unique design and humble Canadiana style. When you choose to stay with us, you will be greeted with a warm local smile willing to assist you to the highest standards.

- Free WiFi
- Affordable rates
- Just off Trans-Canada Hwy
- Mountain and river views
- Alongside the Columbia River
- 24-hr front desk
- Pets welcome
- Free guest laundry
- Ski, golf & snowmobile rates
- Outdoor Hot tub
- HD Optik TV
- Close to Revelstoke Golf Course
- In room coffee, fridge & microwave
- Free hot breakfast

1911 Fraser Dr | +1.250.837.5221 | +1.877.837.5221 | stokehotel.ca | info@stokehotel.ca





## The Explorers Society Hotel

9 Rooms

The Explorers Society is more than a hotel – we are a downtown destination fusing comfortable luxury, delicious food, special people, and personalized service. Housed in the 1911 McKinnon Building, we are Revelstoke's modern heritage boutique hotel. Smart, small, safe, and special, build your memory at The Explorers Society – a TripAdvisor "Best of the Best" (Top 1%) 2 years running.

REVELSTOKE, BC  
20 THE 14  
**EXPLORERS**  
SOCIETY  
HOTEL

- 1911 fully transformed building – luxury meets history
- 9 beautiful guest rooms & suites
- Rooftop guest lounge to gather, hot tub, and sauna
- Quartermaster Eatery: steak, seafood, and special cocktails
- Locally sourced and beautifully prepared fine dining
- Prime downtown Revelstoke location – steps to everything
- Private dining in our modern day speakeasy "The Boiler Room"
- Valet parking and heated gear storage
- Gather, lounge, and shoot pool in historic McKinnon Hall
- *Where a community of like-minded people gather and return*

109-111 1st St. W | +1.250.814.2565 | +1.855.814.2565 | explorers-society.com | hello@explorers-society.com



## The Sutton Place Hotel

210 Rooms

Ski-in/Ski-out hotel at the base of Revelstoke Mountain Resort. Indulge yourself at our world-class, full-service resort community, where you'll be greeted with exceptional services and amenities. This condominium style property features luxuriously appointed suites designed in a fresh contemporary style.

The Sutton Place Hotel  
REVELSTOKE MOUNTAIN RESORT

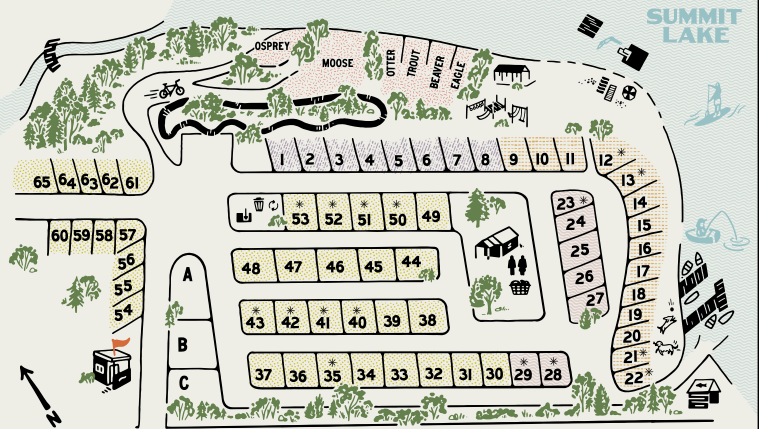
- Free WiFi
- Fully equipped kitchens
- Non-smoking rooms
- Meeting rooms
- Outdoor pool & hot tub
- Pet friendly suites
- Restaurant and tavern
- Secure underground parking
- Ski/bike storage
- Ski-in/ski-out
- Shuttle service
- Concierge service

2950 Camozzi Rd | +1.250.814.5000 | +1.866.378.8866 | suttonplace.com | info\_revelstoke@suttonplace.com

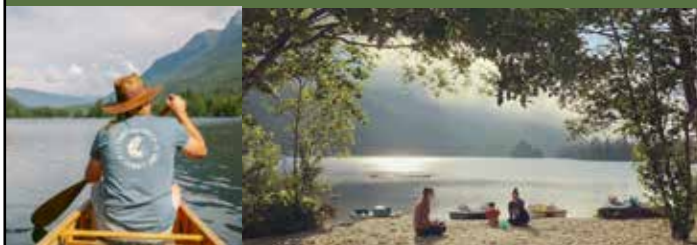


**Camp Valhalla is a family-friendly retreat and RV paradise on the shores of Summit Lake BC.**

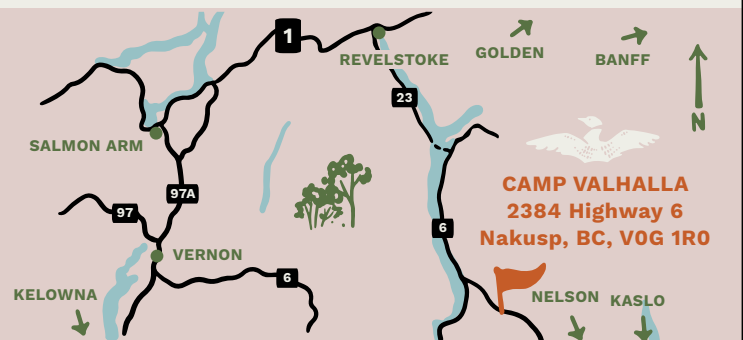
Located 16 km southeast of Nakusp, we offer a pristine waterfront camping experience and endless recreation opportunities for people of all ages.



**BOOK NOW AT** [CAMPVALHALLABC.COM](http://CAMPVALHALLABC.COM)



**PLAY HARD**  **REST EASY**



# MOTELS & INNS



## Alpine Inn & Suites

38 Rooms



Our newly renovated motel, with new carpets, windows, hot tub, and open terrace; concentrates on providing comfortable, clean, quiet and affordable accommodation. We offer king and queen size bedrooms, full kitchen suites, boat/snowmobile/trailer (up to 60 ft.) parking and electrical hookups in parking lot.

- Free in-room optik WiFi
- 1 & 2 bedroom suites w/ full kitchen
- Golf, ski and snowmobile rates
- Indoor hot tub
- BBQ grills
- In-room coffee, fridge & microwave
- Non-smoking rooms
- Free public computer, fax & scanner
- Air-conditioning & heating
- Super long trailer parking
- Seasonal rates
- Shopping/restaurants nearby
- On-site pop machine
- Amenities nearby

1001 2nd St W | +1.250.837.2116 | +1.800.876.8206 | [alpineinnrevelstoke.com](http://alpineinnrevelstoke.com) | [alpineinn@rctvonline.net](mailto:alpineinn@rctvonline.net)



## Days Inn & Suites

56 Rooms



From spacious and newly renovated rooms, featuring 250 thread count sheets, to the 24-hour complimentary gourmet coffee served in the lobby, amenities like these, combined with friendly customer service, ensures that you'll have the best possible stay in Revelstoke.

- Free WiFi
- Online booking
- Telus Optik TV
- Complimentary breakfast
- Wyndham rewards points
- Golf, ski and snowmobile rates
- In-room coffee, fridge & microwave
- Kitchen suites
- Laundry facilities & drying room
- Pets welcome
- Pub/lounge nearby
- Snowmobile parking
- Wheelchair access

301 Wright St | +1.250.837.2191 | +1.250.837.2296 | [daysinn.ca](http://daysinn.ca) | [mail@daysinnrevelstoke.ca](mailto:mail@daysinnrevelstoke.ca)



## Monashee Lodge

16 Rooms



Clean, quiet, friendly and economical. A small comfortable motel, taking pride in making you feel at home. We want your stay to be memorable...for all the right reasons.

- Free WiFi/Cable TV
- Family/Kitchenette rooms
- Free Resort Ski Shuttle
- Pets not allowed
- In-room coffee & fridge
- Sledgers, skiers, motorcycles welcome
- Close to restaurants
- Guest laundry facilities
- All non-smoking rooms

1601 3rd St W | +1.250.814.2553 | [monasheelodge.com](http://monasheelodge.com) | [info@monasheelodge.com](mailto:info@monasheelodge.com)



## Motel 6 Revelstoke

46 Rooms



Our 46 new guest rooms are offered with or without kitchens. The Revelstoke Motel 6 can accommodate any group or family yet is cozy enough to make you feel right at home. Great dining is only steps away.

- Free WiFi & wired Internet
- Hot tub
- Cable TV
- Continental breakfast
- Amenities nearby
- Golf, ski and snowmobile rates
- In-room coffee, fridge, & microwave
- Kitchen suites
- Non-smoking rooms
- Pets welcome
- Seasonal rates
- Wheelchair access

1500 1st St W | +1.250.837.2164 | +1.877.837.8337 | [motel6.com](http://motel6.com) | [motel6revelstoke@gmail.com](mailto:motel6revelstoke@gmail.com)





## Revelstoke Lodge

42 Rooms

The Revelstoke Lodge is dedicated to providing you with a clean and comfortable stay at a price you can afford. For both summer and winter vacations, the Revelstoke Lodge is the choice for hotel or motel accommodation in Revelstoke. All guests get free WiFi.



- Free WiFi
- Seasonal rates
- Cable TV
- Amenities nearby
- In-room coffee, fridge & microwave
- Non-smoking rooms
- Online booking
- No pets
- Golf, ski and snowmobile rates
- Restaurants nearby
- Queen & king size beds
- Downtown location

601 1st St W | +1.250.837.2181 | 1.888.559.1979 | [revelstokelodge.com](http://revelstokelodge.com) | [innkeeper@revelstokelodge.com](mailto:innkeeper@revelstokelodge.com)



## Super 8

44 Rooms

We are located just off the Trans-Canada Highway at the downtown Revelstoke access. All of our rooms provide the comfort and value that you have come to expect from a Super 8.



- Free WiFi
- Non-smoking rooms
- Shopping and restaurants nearby
- In-room coffee, fridge & microwave
- Tim Horton's next door
- Lounge nearby
- Ski & snowmobile packages
- Snowmobile parking
- Wheelchair access
- Complimentary continental breakfast
- Indoor pool & hot tub
- Telus Optik TV

1700 Victoria Rd W | +1.250.837.0888 | +1.866.926.0888 | [super8revelstoke.com](http://super8revelstoke.com) | [info@super8revelstoke.com](mailto:info@super8revelstoke.com)



## Swiss Chalet Motel

22 Rooms

Located in the heart of Revelstoke, we've got 22 clean, comfortable and freshly renovated rooms with reasonable rates and friendly service. Complimentary bagged breakfast, hot and cold beverage station and parking included. Book direct for best rates.



- Free WiFi
- All non-smoking rooms
- Air-conditioning
- Bathroom stone counter tops
- Seasonal rates
- In room coffee & bar size refrigerators
- Queen & king size beds
- Simmons "Recharge" pillow top mattresses
- Some rooms with balcony
- Free hot and cold beverage station
- HD optik TV
- Two bedroom units
- Free bagged breakfast
- Convenience store next door

1101 Victoria Rd W | +1.250.837.4650 | +1.877.837.4650 | Text number 7 am to 11 pm +1.250.814.3876 | [swisschaletmotel.com](http://swisschaletmotel.com) | [info@swisschaletmotel.com](mailto:info@swisschaletmotel.com)



## The Ol' Frontier Motel

28 Rooms

Each clean and cozy room includes free local phone calls, fibre optic WiFi, complimentary ice, and air conditioning. We also have non-smoking rooms available and pets are welcome! Conveniently located next to a gas station.



- Telus Optik TV
- Convenience store (7am-midnight)
- Low rates
- Coach parking
- Group meals/bus tours
- Non-smoking rooms
- Pet rooms available
- Restaurant on-site
- Ski packages
- Snowmobile parking

Corner of Hwy 1 and Hwy 23 N | +1.250.837.5119 | +1.800.382.7763 | <http://frontier-motel.hotelskootenayrockies.com/en/> | [welcomer@rctvonline.net](mailto:welcomer@rctvonline.net)

# B&BS & VACATION RENTALS



## Journey's Perch Guesthouse

Located midway between Revelstoke Mountain Resort and downtown Revelstoke, Journey's Perch provides a warm, welcoming space where guests can decompress and prepare for days full of activity in the Revelstoke area. Historically, the building was built as a Lutheran Church, but since closing it's doors in 2013, a vision to repurpose the beautiful space was realized.

- Free WiFi
- Laundry
- Cable and smart TV
- Air Conditioning
- Parking lot on property

- Sheltered hot tub
- Secure bike lock-up
- Secure ski / board lock up
- Commercial boot / glove dryers
- Steps away from resort shuttle

## 6 Rooms



- Large fully equipped kitchen
- Spacious living areas
- Large dining area
- Sheltered patios & BBQ
- Spacious garden

1502 Mountain View Dr | +1.778.252.5224 | [journeysperch.com](http://journeysperch.com) | [info@journeysperch.com](mailto:info@journeysperch.com)



## The Copeland

Located in the heart of downtown Revelstoke, The Copeland offers old world charm mixed with new world amenities. Well appointed accommodations provide a comfortable mountain haven, while the central location connects guests with the community and the town's relaxed lifestyle.

- Free WiFi
- Free parking on premises
- Located downtown
- Air conditioning

- Euro inspired continental breakfast
- Espresso machine
- Secure gear storage
- Drying room

## 4 Rooms



- Large patio
- Living room
- Dining room

400 Mackenzie Ave | +1.250.837.0803 | [thecopeland.ca](http://thecopeland.ca) | [info@thecopeland.ca](mailto:info@thecopeland.ca)



## Revelstoke Vacation Rentals

Offering Revelstoke's largest selection of properties, from cozy studio suites to large luxury homes, you'll find your ideal vacation rental with us. Being the only property management company offering short and long term rentals, if you're coming for the weekend or the whole ski season, you can stay with us. Book direct and save.

+1.604.628.6689 | [revelstokevacations.com](http://revelstokevacations.com)

## 40 Properties



## ROCKFORD BAR | GRILL

*Featuring the best patio in Revelstoke.*

Discover bold global flavours, incredible mountain views, and outstanding service at the base of Revelstoke Mountain Resort. From juicy CAB steaks to delectable appetizers, you'll find the right dish for every mood. Pair your meal with wines from BC vineyards, beers from local breweries, or cocktails crafted with spirits made right here in Revelstoke.

2950 Camozzi Road | +1.250.837.7160 | [rockfordgrill.com](http://rockfordgrill.com)



**ROCKFORD**  
bar | grill



# REVELSTOKE ITINERARIES.

Make the most of your time in Revelstoke  
with these seasonal must-dos.



PHOTO: BRUNO LONG

## SUMMER.

***Summer activities in Revelstoke are unlimited - go from dawn to dusk!***

- Head up to Mount Revelstoke National Park's summit via the Meadows in the Sky Parkway (peak wildflower season is usually in early August).
- Hike in Glacier National Park for jawdropping mountain views.
- Hit the Illecillewaet River for legendary whitewater rafting.
- Get out on Lake Revelstoke via canoe, kayak, or SUP.
- Check out Revelstoke's local mountain biking scene; there are options for every level.
- Ride the Pipe Mountain Coaster at Revelstoke Mountain Resort.
- Explore further, rent a side by side or take a guided dirt biking tour.



PHOTO: LUKAS DEMBICKI

## FALL.

***Slow down and take in our arts and culture scene.***

- Stroll downtown's historic Mackenzie Avenue.
- Check out our events calendar ([seerevelstoke.com/events](http://seerevelstoke.com/events)) and schedule your visit around the legendary LUNA Arts Festival.
- Head to a nearby natural hot spring.
- Hike, mountain bike, or trail run until the snow flies.
- Visit our local museums for a taste of Revelstoke's fascinating history.
- Sample our local cafés.
- Go fishing on shore, with your boat or hire a guide. Make sure to follow the rules and regulations.



PHOTO: Euan Mitchell

## WINTER.

***Take advantage of our big mountain terrain and legendary powder.***

- Head to Revelstoke Mountain Resort to take in North America's longest vertical.
- Check out the Revelstoke Nordic Ski Club's terrain at Mount Macpherson.
- Book a snowmobile, dog sled, or snowshoe excursion.
- Cozy up in a brewery, distillery, coffee shop and taste the local offerings.
- Enjoy a performance at the Revelstoke Performing Arts Centre.
- Try axe throwing, the escape room or watch a movie at the theatre.



PHOTO: DESTINATION BC

## SPRING.

***Get in touch with nature and explore our wild spaces.***

- Explore Revelstoke's waterfalls - Sutherland and Begbie Falls.
- Hike to the Nels Nelsen Ski Jump in Mount Revelstoke National Park.
- Road bike along Airport Way, taking in views of Mount Begbie and the return of birds to the floodplains.
- Ski until closing day at Revelstoke Mountain Resort.
- Stroll the Illecillewaet Greenbelt trails.
- Warm up in a hot pool or a hot spring nearby.



## REVELSTOKE BEAR AWARE SOCIETY

***Keeping bears wild, and our community safe***

Welcome to Bear country! We keep our garbage locked up and secure all our bear attractants to keep our residents, visitors and bears safe. When you're in bear country, NEVER feed the bears, keep your garbage and attractants securely indoors or locked in a vehicle. Learn more about being bear aware on our website or social channels.

[revelstokebearaware.org](http://revelstokebearaware.org) | [@revelstokebearaware](https://www.instagram.com/revelstokebearaware)



# CAMPING.

	Flush Washrooms	Showers	Store	Laundry	Kitchen Facility	Pets	Playground	Pool / Hot Tub	Boat Launch	Pull Through Sites	Full Hook Ups	Fire Pits	Picnic Sites	Swimming	Nature Trails	Downtown Nearby	Food/Services Nearby	Reservations	Overflow Camping	WiFi	Sani Station	Discounted Rates	
<b>Arrow Lakes Provincial Park</b> info@westkootenayparks.com Sites: 17   Avg. Rate: \$20						•			•			•		•								•	9550 Hwy 23 South 52km from Revelstoke westkootenayparks.com
<b>Blanket Creek Provincial Park</b> info@westkootenayparks.com Sites: 105   Avg. Rate: \$28	•	•				•	•					•	•	•	•			•			•	•	5050 Hwy 23 South 24km from Revelstoke westkootenayparks.com
<b>Boulder Mountain Resort (Year-round)</b> +1.250.837.4420 Sites: 29   Avg. Rate: \$45	•	•	•	•		•	•	•			•	•	•				•	•	•	•			3069 Trans Canada Hwy 3.5km from Revelstoke bouldermountainresort.ca
<b>Lamplighter Campground</b> +1.250.837.3385 Sites: 50	•	•			•	•	•			•	•	•			•	•	•	•		•			1760 Nixon Rd. lamplightercampground.com
<b>Snowforest Campground</b> +1.250.837.7500 Sites: 63   Avg. Rate: \$41 + national park pass	•	•				•				•		•			•	•	•	•					Mount Revelstoke National Park pc.gc.ca/revelstoke-camping
<b>Revelstoke Campground</b> +1.250.837.2085 Sites: 175	•	•	•	•		•	•	•		•	•	•	•	•	•		•	•		•			2411 Koa Rd. revelstokecampground.com
<b>Martha Creek Provincial Park</b> info@westkootenayparks.com Sites: 108   Avg. Rate: \$28	•	•				•	•		•	•		•	•	•	•			•			•	•	1475 Hwy 23 North 20kms from Revelstoke westkootenayparks.com
<b>Williamson Lake Campground</b> +1.250.837.8806 Sites: 42   Avg. Rate: \$30	•	•		•		•	•			•	•	•	•	•	•	•	•	•	•	•	•		1817 Williamson Lake Rd williamsonlakecampground.ca



## REVVY OUTDOORS OUTFITTERS

*Gear, clothing, footwear and accessories for camping, hiking, back-packing, climbing, mountaineering, skiing, shredding and more.*

We are your camping headquarters! Front-country to back-country and everything in between. Tents, sleeping bags, stoves, cookware, food, boots, packs, duffels, plus a huge selection of handy accessories. Shop in person or online at [revvyoutdoors.com](http://revvyoutdoors.com).

Downtown 201 Mackenzie Ave. | +1.250.814.2575 | [revvyoutdoors.com](http://revvyoutdoors.com)







## WILLIAMSON LAKE CAMPGROUND

*Family oriented campground by the lake for all age groups.*

Conveniently located 5 km from Revelstoke's city core, Williamson's Lake Campground offers 44 tenting, power only and full service sites. It is a popular location overlooking the sandy shores of Williamson Lake. With amenities such as showers, flush toilets, wifi, and coin operated laundry. Activities on site include Swimming, Small Boat Rentals, Playground and Mini Putt!

1817 Williamsons Lake Rd. | +1.250.837.8806 | [williamsonlakecampground.ca](http://williamsonlakecampground.ca)



## BOULDER MOUNTAIN RESORT (OPEN YEAR-ROUND)

*Cabins, suites, RV sites, glamping, and forested camping.*

We are located 3.5km west of Revelstoke, on Highway #1.

Your perfect base camp with direct access to the Boulder and Frisby trail head, with some of North Americas best snowmobile, ATV, hiking and biking trails.

3069 Trans Canada Highway - Revelstoke, BC. | +1.250.837.4420 | [bouldermountainresort.ca](http://bouldermountainresort.ca)



# REVELSTOKE'S RV AND ADVENTURE RESORT

RV Sites | Cabins | Tenting | Pool | Store | Adventure Centre | Saunas | Playgrounds

Heated





# REVELSTOKE

MOUNTAIN RESORT

**LEGENDARY** POWDER | **BIG MOUNTAIN** TERRAIN | **SMALL TOWN** CHARM



[revelstokemtn.com](http://revelstokemtn.com)