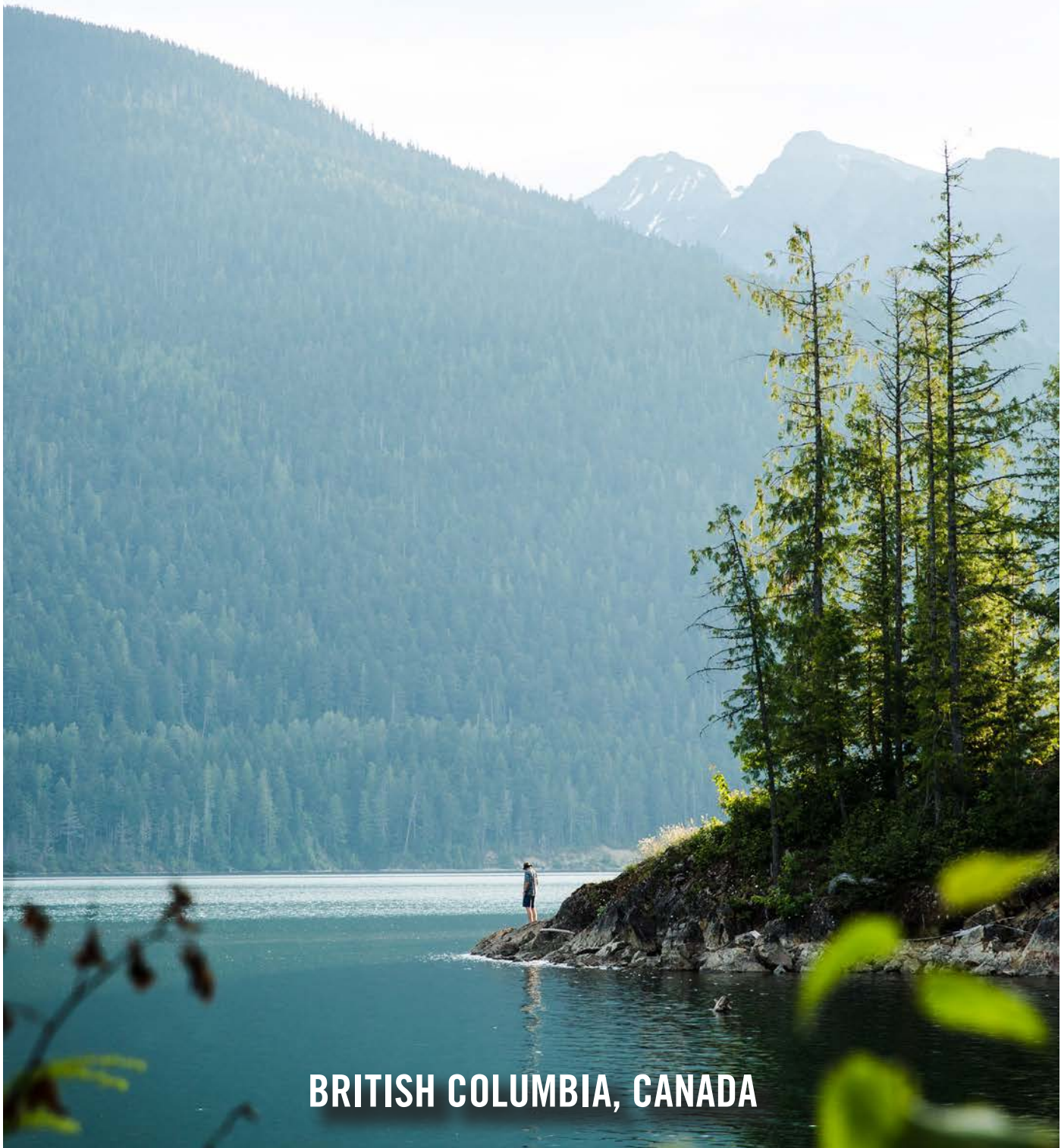


REVELSTOKE.

EXPERIENCE GUIDE



BRITISH COLUMBIA, CANADA



REVEL



STOKE.

HOW TO USE THIS GUIDE.

- Active Families & Beginner Experiencers
- Recreationalists & Weekend Warriors
- ◆ Extremists & Die-Hard Enthusiasts

TABLE OF CONTENTS.

- 06 GETTING HERE.
- 07 VISITOR INFORMATION.

SUMMER.

- 08 NATIONAL PARKS.
- 09 HIKING.
- 10 MOUNTAIN BIKING.
- 12 DIRT BIKING.
- 13 FLYING.
- 14 ROCK CLIMBING.
- 15 ADVENTURES ON WATER.
- 16 GOLFING.
- 17 FISHING.
- 18 RAFTING.

WINTER.

- 20 REVELSTOKE MOUNTAIN RESORT.
- 22 HELI & CAT SKIING.
- 23 BACKCOUNTRY TOURING.
- 24 SNOWMOBILING.
- 26 NORDIC SKIING & SNOWSHOEING.

YEAR-ROUND.

- 27 DOWNTOWN.
- 28 FOOD & DRINK.
- 32 ARTS & CULTURE.
- 34 HISTORY & HERITAGE.
- 36 WELLNESS.
- 37 FAMILY FUN.
- 40 ACCOMMODATION.
- 48 CAMPING.
- 50 CITY MAP.

WELCOME TO REVELSTOKE.

Here, you earn it.
You've come further, reached deeper, wanted more.
Because here, adventure is real.
But the rewards? Unreal.
Cut from wood and blasted from rock.
Connected by steel and bonded by people.
This place has always been more than just a stopover.
This is the definitive mountain destination.
This is #TheRealStoke.

STOKED ON REVY?

Tag your adventures with
#THEREALSTOKE





PHOTO: BORN PATTERSON | DOWNTOWN REVELSTOKE

KEEP REVELSTOKE AUTHENTIC AND AMAZING.

We are conscious of the additional pressure that tourism puts on our local environment, and we encourage you to keep your impact as minimal as possible while you are here.

TRANSPORT

Revelstoke's downtown is walkable and many other attractions can be reached by bike. The Revelstoke Resort Shuttle will get you from your accommodation to the ski hill without the hassle of parking in the winter. If you're travelling electric, we have a charge station right in front of the Visitor Information Centre. Please keep Revelstoke idle free!

SHOP LOCAL

While you're here, do your best to support our community. We have many locally owned businesses and restaurants. We're proud to support local entrepreneurs, and hope that you do the same during your visit!

RESPECT WILDLIFE

When in our parks and wilderness areas, ensure that you keep your distance from wildlife and refrain from feeding animals. Additionally, some local trails are closed to protect our mountain caribou at certain times of the year. Please check with the Visitor Information Centre regarding wildlife closures.

STICK TO THE TRAILS

When you're out exploring, please stick to existing trails, particularly in our sensitive alpine areas. Follow posted signs and respect guidelines.

BUILD A ZERO WASTE TRAVEL KIT

Your kit can include, but is not limited to: a reusable bottle & mug, reusable utensils & straw, a packable backpack, some snack bags & sandwich bags, etc. Your kit should help you reduce single-use items. Stop in at one of our local shops to grab any missing items.

KNOW BEFORE YOU GO

If you're planning a backcountry trip or outing, make sure that you are equipped with the proper equipment and knowledge. If you don't have the knowledge or equipment, check with our local outfitters and guides who may be able to help you stay safe.

PACK-IN / PACK-OUT

Pack all of your garbage out!



REVV OUTDOORS OUTFITTERS

Gear, clothing, and accessories for camping, hiking, back-packing, climbing, mountaineering, skiing, shredding and more.

We strive to offer products that help ensure sustainability, both environmentally and economically. Drop by for a FREE copy of our guide to clean camping, hiking, and sustainable living.

Downtown 201 Mackenzie Ave. | +1.250.814.2575 | info@revvyoutdoors.com



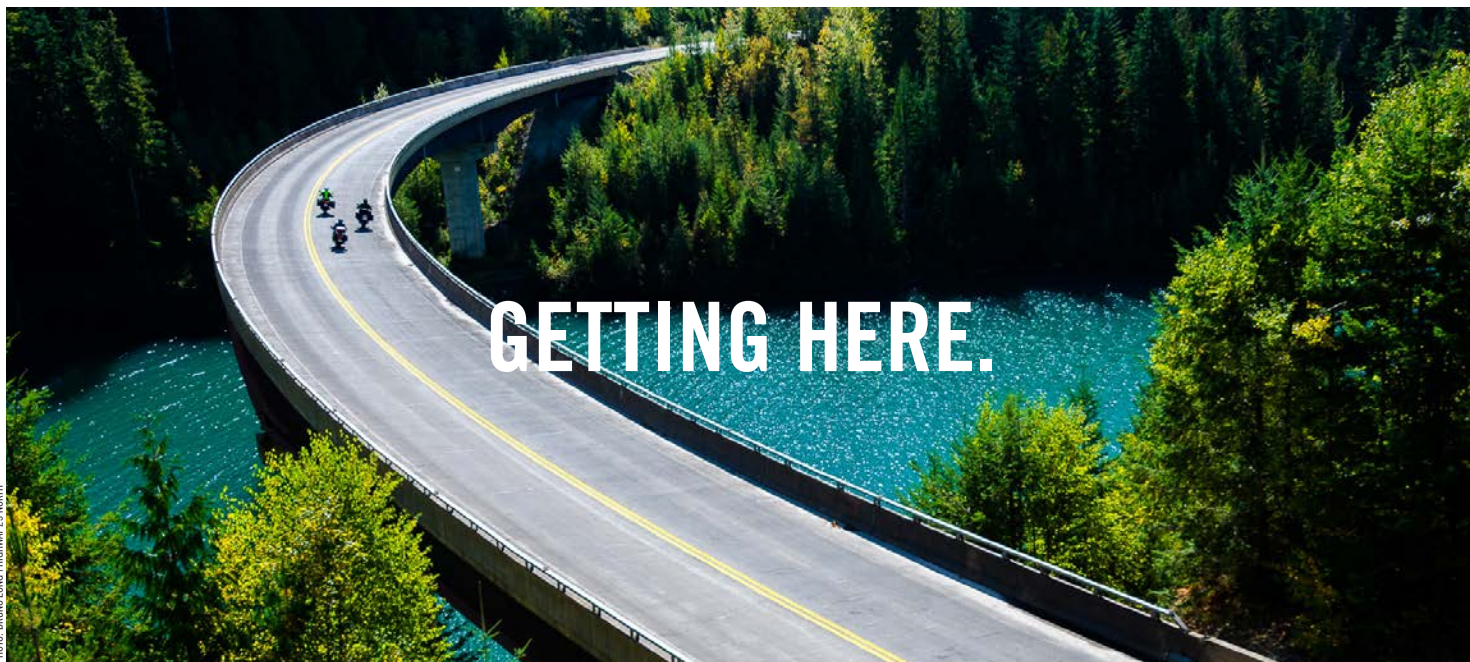


PHOTO: BRANDI LONG / HIGHWAY 23 NORTH

GETTING HERE.

ESCAPE THE CROWDS.

Revelstoke sits amongst some of the most jaw-dropping and accessible mountain wilderness in BC, flanked by Mount Revelstoke and Glacier National Parks.

Getting here is part of the adventure. Revelstoke is both remote and accessible.

Air: Land in either Calgary or Kelowna. There's ground transfer between Kelowna International Airport and Revelstoke.

Bus: The Stoke Shuttle provides multiple daily shuttle bus transfers from Kelowna International Airport to Revelstoke. Book your seat at EverythingRevelstoke.com. Rider Express Transportation services Vancouver to Calgary daily, check out RiderExpress.ca for a schedule.

Car: Revelstoke is 4.5 hours from Calgary and 6.5 hours from Vancouver on the Trans-Canada Highway. Budget for extra driving time in the winter, and book ahead to get winter tires on your rental vehicle. Winter tires are mandatory on BC highways October to April. Check Drivebc.ca for planned events and road conditions.

- GO PREPARED.**
1. Check road conditions
 2. Fuel up
 3. Pack the essentials
 4. Leave early
 5. Watch for wildlife

While in Revelstoke: The Revelstoke Public Transit Service provides four routes across town. Pick up a rider's guide or purchase a bus pass at City Hall. In winter, the Resort Shuttle will pick you up throughout town and deliver you to and from Revelstoke Mountain Resort. This shuttle will also take you to the nordic trails on weekends. Many accommodations include free shuttle passes with your stay; be sure to ask when booking. Local taxi service is also available.

<u>Departing</u>	<u>Distance</u>	<u>Driving Time</u>
Kelowna, BC	187 km / 116 mi	2.5 hrs
Kamloops, BC	224 km / 139 mi	2.5 hrs
Banff, AB	283 km / 176 mi	3.5 hrs
Calgary, AB	410 km / 254 mi	4.5 hrs
Vancouver, BC	565 km / 351 mi	6.5 hrs
Edmonton, AB	701 km / 435 mi	7 hrs





PHOTO: TESSANDBA HILBIRD | REVELSTOKE VISITOR CENTRE

YOUR GO-TO RESOURCE WHILE IN REVELSTOKE.

Easily accessible and conveniently located on Victoria Road our friendly staff can provide you with all the information you need to make the most of your stay.

Whether you're passing through, here for the day, or enjoying an extended trip, drop into the Revelstoke Visitor Information Centre and speak to one of our passionate counsellors to find out everything Revelstoke offers. Our counsellors are professionally trained and love to live and play in Revelstoke. They are eager to help you have the best experience and make the most of your visit.

Our counsellors are constantly on the lookout for the best experiences. They will help you book accommodation and activities, provide maps (as pictured below), offer directions and let you know about the local hot spots. In the summer months, you may also find our Roaming Visitor Centre Van located at Mount Revelstoke National Park or Revelstoke Mountain Resort.

Located in the heart of downtown, the Visitor Centre team is here to assist you and customize your trip. Amenities available at the Centre include:

- Free parking and RV parking
- Accessible building and washrooms
- Free WiFi
- Electric car charger
- Souvenir shop and local art
- Year-round trip planning by email or phone



CONNECT WITH US.

www.SeeRevelstoke.com
@SeeRevelstoke | #TheRealStoke

Revelstoke Visitor Information Centre
visitor.ctr@revelstokechamber.com
301 Victoria Rd | +1.250.837.5345





NATIONAL PARKS.

TWO NATIONAL PARKS SIT AT OUR DOORSTEP: MOUNT REVELSTOKE & GLACIER.

Gather your family and circle the trunk of an ancient cedar tree, stand on a mountain summit, and take in vivid alpine wildflowers in full bloom.

Drive into Mount Revelstoke National Park on the Meadows in the Sky Parkway. The paved road begins in lush evergreen forests of hemlock and white pine; bringing you first to the Beaver Lodge Kids Bike Park, then the Nels Nelsen exhibit—where ski jumping world records were once set. You can literally step into “Nels’ Knickers”, an interactive sculpture that lets you lean into the air like a ski jumper. From here, wander into Inspiration Woods or cruise the Soren Sorensen trails, a local favorite.

Further East on Hwy 1, visit the Giant Cedars and Hemlock Grove Boardwalks, or explore railway history along easy trails in Rogers Pass National Historic Site.

Saunter through high alpine meadows with spectacular mountain vistas at the top of Mount Revelstoke National Park. As the forest gives way to moss and heather, lingering ice and snow frame impressive quartzite walls in the distance. Hike the Balsam Lake, Eagle Knoll, Koo Koo Sint, Heather Lake, or First Footsteps trails for a solid introduction to the area.

For a bigger itinerary, step up your stride in Glacier National Park with a visit to Marion Lake. Follow the steep trail up Avalanche Crest along treeless slopes offering views of glaciated peaks ringing in rocky harmony.

Graduate from the meadows in Mount Revelstoke National Park onto Miller and Eva Lakes, a farther 5.5km and 6km out. Want more? Continue another 3.5km from Miller out to Jade Lakes—a trail runner’s dream circuit.

In Glacier National Park, the famously steep Abbott Ridge Trail offers spectacular mountain, glacier and valley views. If you have mountaineering skills, check out famous Mount Sir Donald across the valley, to ascend over 2,000 meters to reach the summit.

PARKS CANADA HIKING MAP:

Pick up yours for free from the Revelstoke Visitor Information Centre, visit our website or find maps in the National Parks.



REVVY OUTDOORS OUTFITTERS

Gear, clothing, and accessories for camping, hiking, back-packing, climbing, mountaineering, skiing, shredding and more.

Everything you need for all your adventures in our amazing parks. Drop by for our FREE bear safety demonstration and all your supplies.

Downtown 201 Mackenzie Ave. | +1.250.814.2575 | info@revvyoutdoors.com





PHOTO: DESTINATION BRITISH COLUMBIA | REVELSTOKE MOUNTAIN RESORT

REVELSTOKE SITS IN THE THICK OF BC'S ONLY INLAND TEMPERATE RAINFOREST.

Your boots were made for walking and these trails were made for those boots. From short river-valley flats to long alpine ridges, we've got you covered.



Downtown Revelstoke's Greenbelt River Trails are as short or as long as you want to make them. With easy in and out points all along the way, these paths are also home to roughly 60 species of beautiful birds.

You can also visit Sutherland Falls in Blanket Creek Provincial Park. It's a 5 minute walk to a 60 ft. chute of cascading water that brave kayakers sometimes take a puckering plunge down. Enjoy viewing them cozily from dry land!

REVELSTOKE HIKING MAP:

Pick up yours for free from the Revelstoke Visitor Information Centre or visit our website.



For another impressive wall of tumbling water, wind your way down Highway 23 South for 8km until you get to the parking lot with a trail head sign for Begbie Falls Recreation Trail. Traverse through the mossy forest of giant trees for 3km until you get to the recreation site. It's a short, steep hike onto the falls from here. After you take in the mist, get some sun and an unfiltered view of the Selkirk Mountains down on the pebble beach along the Upper Arrow Lake Flats.

Want more? Head to Revelstoke Mountain Resort and explore 23km of lift accessed hiking trails serving up incredible views of the surrounding peaks.



There's no peak in Revelstoke more iconic than Begbie. Its soaring double summits are aproned by a surrounding glacier. Named for a famous 19th century judge with a stiff upper lip, this mountain is serious. The trail is steep with outstanding and rewarding views, which only come after several hours of hiking. Once you reach the campsite where the vistas begin in the alpine, you'll need mountaineering skills to carry on any farther. There's a glacier to cross and an exposed scramble to the top.

Short on time but still craving adventure? Local guiding companies offer helicopter hiking tours to alpine areas throughout the region.



REVELSTOKE BEAR AWARE SOCIETY

Keeping bears wild, and our community safe

Revelstoke is located in prime bear habitat. Bears will hopefully always be part of our natural landscape, and their nature will always lead them to search for food within Revelstoke. Let's all do our part to reduce bear attractants, not feed the bears, and keep a garbage/litter free space to keep our bears safe.

+ 1.250-837-8624 | revelstokebearaware.org | revelstokefruitshare.org





MOUNTAIN BIKING.

FROM LOAMY STEEPS TO FLOWY PACKED GOLD, REVELSTOKE'S SPRAWLING SINGLETRACK AND EPIC ALPINE RIDES ARE SECOND TO NONE.

Home to nine unique riding zones and one of BC's first adaptive mountain bike trails, we've got something for everyone.

Take your young ones to Beaver Lodge Kids Bike Park near the bottom of Mount Revelstoke National Park. Its creative animal-themed features will have imaginations flying as kids roll over salamander tails and between fake animal droppings. Grown ups can head over to Mount Macpherson's Griffith Creek beginner loops, where the low angle "brown pow" is smooth and inviting. While you're there try out Miller Time - a 1km multi-directional loop built to accommodate adaptive bikes and beginners.

PHOTO: ROBIN MUNSHAW | FRISBY RIDGE



Macpherson's Flowdown is the buffest trail around and will keep you swooping for a solid morning with all sorts of possible linkups and add-ons. For a longer version of the same with an alpine backdrop, carry on to Frisby Ridge. The 12km out-and-back (24 km return) cross-country trail traces a near perfect ridge at incredibly civilized grades to a glassy alpine lake. If you've still got juice, hammer another 5.7 km on the extension, blasting up and back down snaky berms and rolling landscape. Back at the parking lot, the Ultimate Frisby Connector is a tempting downhill add-on but take note, it gets full-on by the time you hit the Ultimate Frisby DH trail.

Revelstoke Mountain Resort's inaugural trail, Fifty Six Twenty, takes you on a long roller coaster of blue flow with seemingly endless jumps and berms. Take the gondola up and access it right from there, or climb 7km on the stoke climb to enjoy all 15km of machine-built trail running the full vertical of 5,620 ft.

The Resort extended their offer of downhill trails in 2020. Check out the blue and black trails from the top of the gondola. RMR has plans to open even more lift accessed trails for summer 2021.

Boulder Mountain is Revelstoke's classic downhill playground. It's got everything from bike park style flow and lofty table tops to wooden stunts and loamy steeps. With over a dozen trails, you can easily pick your poison. While it's mostly a shuttling area, there are mellower trail options in the mix, and many enduro riders choose to pedal up the road.

For a thigh-crushing cross-country epic, drive Highway 23 North to Keystone. This 11km (22km return) technical out-and-back trail has punchy climbs and tight switchbacks up alpine cirques. The demanding alpine route links awe-inspiring views of the Monashee Mountains with some of the most rewarding sections of alpine singletrack in BC. There is no cell service, so full backcountry protocols are in order—be prepared!

REVELSTOKE MOUNTAIN BIKING MAP:

Pick up yours for free from the Revelstoke Visitor Information Centre or visit our website.

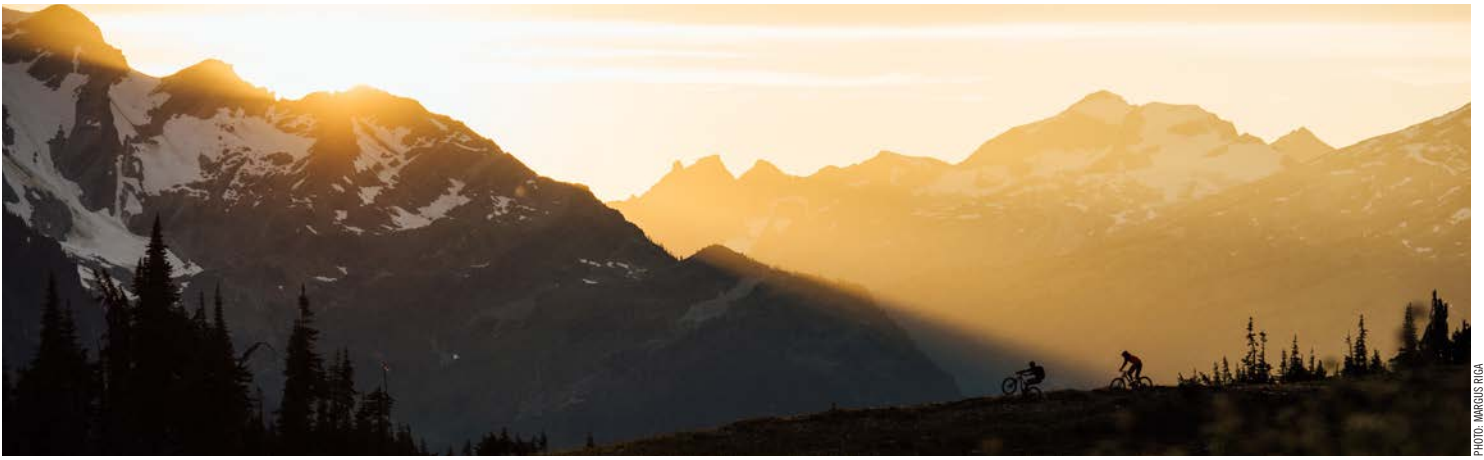


PHOTO: MARCUS RIGA

TRAIL KARMA - DONATE TO YOUR LOCAL VOLUNTEERS

The Revelstoke Cycling Association manages a world-class network of over 150 kilometers of trails. Our mission is to improve and promote cycling in Revelstoke by developing cycling trails and infrastructure, organizing events and programs, building the cycling community, and advocating and educating in support of cycling in Revelstoke. We are a volunteer-run organization with a paid maintenance crew that relies on donations from people like you.

If you're riding Revelstoke, please make a donation so we can continue to maintain and build trails.

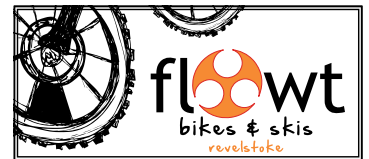
1. Donate to the Revelstoke Cycling Association at bikerevelstoke.org
2. Earn Trail Karma by donating at trailforks.com/karma/



FLOWT BIKES & SKIS

It's all about the ride.

We absolutely love to ride bikes! That's why we do all we can to help you hit the trails and find the perfect riding experience. We're here to help - whether you need a new ride, expert mechanical service, or the latest trail info. Looking for a specialty part or repair? Want to demo a new ride? We have you covered.



709 Victoria Rd | +1.250.837.4044 | flowtbikes.com



TANTRUM RIDE COMPANY

Don't let your dreams be dreams.

Tantrum Ride Co. is an independent bicycle store in the heart of downtown. We aim to be a welcoming place for friendly advice and top-quality cycling products, including bikes from Trek, Ibis and Electra. We are also a full service repair and rentals shop. Come take one for a ride.



306 First St W | +1.250.837.5979 | tantrumrideco.com



WANDERING WHEELS

Unforgettable mountain bike experiences.

Ride the best trails in BC with our professional local mountain bike guides. We offer guided mtb trips and day tours, heli-bike and e-bike tours, lessons and clinics, and shuttle services. We are Revelstoke's only tenured and certified bike tour company and our guides are skilled, knowledgeable, and fun. We welcome all ages and abilities - let's ride!



120 Mackenzie Ave | +1.250.814.7609 | wanderingwheels.ca



DIRT BIKING.

WELCOME TO ONE OF THE BEST ALL-ROUND MOTO ZONES IN BC.

Featuring two main trail-riding areas, a full-sized motocross track, a challenging endurocross track, and a popular kids/beginners track.

Take Westside Road 10km north of downtown Revelstoke to find the trail system, where there are kiosks with maps at each riding zone. Kids and beginners can warm up on the beginner track. Trail-bound full-sized humans can head towards Kick Start and Easy Street. Want to check out the action before deciding if you're into trying it? There's a handy viewing platform to spy the scene.

To start, dig into Ego Trip in the Lower Frisby zone, then work your way up and onto the Deadman's Creek network for a total of 75km of purpose-built moto trails to work through. Follow the Yellow Brick Road on your journey towards the techy stuff and catch glimpses of glassy Lake Revelstoke shining below.

Get your heart pumping on the full-sized motocross track—sending floaty doubles, long tables and poppy step-ups to your heart's content. Then ride over to Rowlands Revenge, the relentless tacky loop climbs high above the lake to some of the best views going—if you're not busy whiskey-gripping your bars!

REVV RIDERS DIRTBIKE CLUB - *Did you enjoy your ride?*

The Revy Riders Dirtbike Club depends on membership fees to maintain and build our trails and tracks. All money collected goes directly towards maintenance and further development. To ride our tracks, become a member or sign our waiver and pay \$10 for a day pass. Deposit into the lockbox provided at the kiosk. revyriders@gmail.com | revyriders.ca



ROUGH COUNTRY MARINE

Serving Revelstoke's outdoor enthusiasts.

Rough Country has everything to keep you riding on the trails or the track. Tires, lubricants, apparel, helmets, goggles, parts and accessories.

210 2nd St. W | +1.250.837.6738 | rough-country.ca



GREAT CANADIAN TOURS - *Dirt bike & ATV side by side rentals and tours.*

1870 Glacier Lane | +1.250.837.5030 | riderevelstoke.ca



PHOTO: ALAN MILKOVIC LAUNCHED OFF REVELSTOKE MTR RESORT

FLYING.

THE BEST SEAT IN THE HOUSE.

Take a tandem paraglide flight over the Columbia River, or land on a remote mountain peak with a helicopter tour.



If you've never been in a helicopter, there's no better place to experience unfettered flight. Cover miles in minutes and get an unequalled perspective. Hover comfortably over Wap Lake or the Revelstoke Dam, buzz over the Upper Arrow Lake Flats, swoop by waterfalls, rivers, and even tumbling glaciers. It's a helicopter, you can go anywhere!

PHOTO: PAUL TIGCHELAAR | GLACIER HELICOPTER



It's time for that tandem paraglide flight you've always talked about. Starting from 2,200 meters above sea level, launch off Mount Mackenzie, the most vertical relief in North America. All pilots are certified by the Hang Gliding and Paragliding Association of Canada. Tandem flights are open to all ages, you don't need any previous experience, and you can do it year-round.

PHOTO: TAKING OFF FROM REVELSTOKE MOUNTAIN RESORT



Experienced licensed pilots can bring their own wings and launch off the top of Revelstoke Mountain Resort, experiencing the freedom and exhilaration of big mountain flying. For safety, please be sure to brush up on the rules and get in touch with the local pilot. Our local paragliding company has put information together for visiting pilots; visit revelstokeparagliding.com.

PHOTO: GLACIER HELICOPTER



GLACIER HELICOPTERS

Take your adventure to new heights!

Sightseeing tours, heli-biking, heli-weddings, heli-picnics, airport transfers, and custom charter work.

3451 Hwy #1 - 5 km west of Revelstoke (year-round)
+1.250.837.9569 | glacierhelicopters.ca | Instagram: @glacier_helicopters





PHOTO: LAURA SPANTO | WATERWORLD

ROCK CLIMBING.

**FROM SPORT TO TRAD, SINGLE PITCH TO MULTI,
COME HANG ON OUR ROCK AND FIND YOUR FLOW.**

Routes ranging from
5.8 to 5.13a.



If you're quite green, we recommend taking a lesson or hiring a guide to show you the ropes. Otherwise, pick up a copy of the Revelstoke Rocks guidebook by Ruedi Beglinger from one of the outdoor stores downtown. He's the guy that first established many of the climbs in the area, and his book remains the best resource to this day. Next, head 10 minutes down Highway 23 South to Begbie Bluffs, with awesome single-pitch sport-climbing options for kids, beginners and even first climbing dates. The crag is a short walk on a well-defined trail from the parking lot. Start with High & Dry or Bifacial Retouch (5.8 and 5.9 respectively).



Shaketown is a little farther down the highway from Begbie Bluffs, with a further plethora of single-pitch intermediate routes, like Quicksilver Daydreams (5.10b), Two Hands (5.11a), and Flying Shoes (5.11b). To start on some multi-pitch, drive another 10 minutes down the highway to the shady and river-cooled Blanket Creek Canyon and walk 10 minutes to Blanket Buttress. Next, crimp and heel hook your way up the Blanket Arête (5.10a), or Tree Line (5.10c) and keep building from there.



Waterworld may be a mediocre movie, but it's a mind-blowing climbing wall. To tag the towering cliffs rising right out of Lake Revelstoke, you first rappel down to belay stations made of planks bolted to the wall. Choose from two to four pitches as you work your way back up routes ranging from 5.10b to 5.12a, these are longer climbs. Start on Pirates of Waterworld (5.10b) and No Panic In The Titanic (5.11b) and eye up other routes from there. Remember to watch for rock fall, and to wear a helmet even when belaying.

WANT MORE INFO? Check out the Rock Climbing page on our website.



REVVY OUTDOORS OUTFITTERS

Gear, clothing, and accessories for camping, hiking, back-packing, climbing, mountaineering, skiing, shredding and more.

Sterling rope & webbing, CAMP climbing gear, Ortovox safety, plus all the clothing and accessories you need. Drop by to get your copy of Revelstoke Rocks – the ultimate guide to climbing in the area.

Downtown 201 Mackenzie Ave. | +1.250.814.2575 | info@revvyoutdoors.com



FLEXPEDITIONS - Canoe rentals & tours, whitewater kayaking & rock climbing instruction, and women's wellness retreats.
Revelstoke, BC | +1.866.929.3539 | flexpeditions.com | info@flexpeditions.com



PHOTO: LAURA SCANTO

ADVENTURES ON WATER.

LAKE REVELSTOKE HOLDS 130 KMS (81 MI) OF WILD, SECLUDED AND COOL GLACIER-FED WATERS.

Magnificent rivers also flow through Revelstoke: the Illecillewaet, Jordan, and Columbia, just to get started.



Big, flat and glassy. Lake Revelstoke is prime for an easy kayak, stand-up paddleboard, or canoe tour. It's perfectly cool on a warm summers' day! Tours meander into coves and adjoining river systems that make up the major dividing waters of the Monashee and Selkirk Mountains. Go to Martha Creek Provincial Park for lunch along the pebbly beach or to lay on the grass. Explore the Columbia River on a comfortable raft guided tour while learning about this famous river. For the warmest water, hit up Williamson Lake back in town, with a sandy beach, playground, and mini putt.

WANT MORE INFO?

Check out the Water Sports page on our website.



If you're comfortable navigating without a guide, rent a canoe or kayak for yourself. Lake Revelstoke, the Columbia River, or Upper Arrow Lake are all dotted with hidden waterfalls and inlets around every bend. Be aware of shimmying into colder waters, fluctuating water levels due to the dams, and watch for anglers and power boaters.

PHOTO: TOM POOLE | JORDAN RIVER



If you're a whitewater kayaker, Revelstoke is full of frothy runs. There's everything from the class II section of the Lower Jordan to the roaring class IV-V sections of the Illecillewaet's Box Canyon. You can also check out the Upper Jordan and the Pingston River. For the very bold, Blanket Creek's iconic 60-foot Sutherland Falls offers all the airtime you could want.



NATURAL ESCAPES KAYAKING AND CANOEING

See the mountains from our view!

Join us for a fantastic guided tour on the water! Rentals and lessons are also available. We are one of the top-rated activities and have received Trip Advisor's HALL OF FAME status, celebrating 5 years of Certificates of Excellence. Experience our beautiful lakes and natural environment.

Our 21st season of sharing our love of kayaking and nature with our guests!
+1.250.837.7883 | naturalescapes.ca





GOLFING.

HOME OF THE LONGEST RUNNING GOLF TOURNAMENT IN BC.

The tree-lined, 18-hole Revelstoke Golf Course will woo experienced swingers and newcomers alike.

Following Revelstoke's famous "Big Eddy" along the curve of the Columbia River, the course is lined with giant trees nourished by glacial waters. "First Tracks" golfers will breathe in an evergreen aroma mixed with freshly cut fairways in the morning mists of the Monashee and Selkirk Mountains.

Get 18 holes in casually over 3.5 hours to free up the hottest hours of the day, or linger longer by playing an extra round and hitting the restaurant in the club house. Improve your swing by signing up with one of the PGA of Canada Pros the course has on staff. Work on your precision at the full-length driving range with both synthetic and real-grass tees and down in their practice bunker. Once you're all tuned up, the Revelstoke Golf Course hosts the oldest tournament in the province every September: The Labour Day Classic.

PHOTO: ZOYA LYNCH

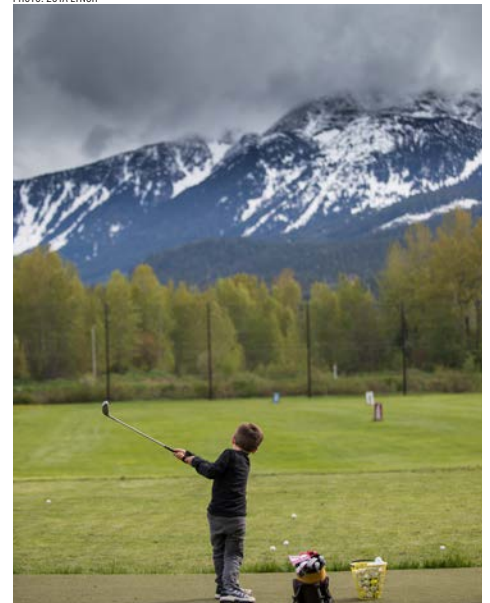


PHOTO: TOURISM REVELSTOKE



Revelstoke Golf Course

One of BC's most beautiful golf courses.

This historic 18-hole, par 72, 6537 yard championship layout provides an excellent golfing challenge, and is conveniently located just minutes off the Trans-Canada Highway. Situated on a peninsula surrounded by stunning mountain views, golfing in Revelstoke is as much about the location as it is about the game.

171 Columbia Park Dr. | +1.250.837.4276 | golfrevelstoke.com





PHOTO:AAA GUIDED TOURS | LANE REVELSTOKE

ANGLERS CAN CAST INTO OVER 80 LAKES AND OTHER RICH WATERWAYS.

There are over 200 rivers, creeks, and streams churning with freshwater fish around Revelstoke.
All within 50 km (31 mi) of town.

If you don't have a BC fishing license and the fishing regulation book, start by picking them up at Service BC in the Revelstoke Courthouse, online at www.fishing.gov.bc.ca, or at Johnny's Wild Outdoors shop. Once you're legal, aim for one of the quiet corners of Williamson Lake just five minutes south of town. The small 3.9-hectare local fishing hole has been regularly stocked with rainbow trout since 2009. If you want to snag some giant bull trout too, you'll want to be on Upper Arrow Lake, Lake Revelstoke, or Kinbasket Lake in early spring or late fall for open-water trolling. The bigger lakes have big fetches and can pick up strong winds, so be sure to keep an eye on the weather. In mid-summer and early fall (prime time!), fish for cutthroat and rainbow trout with dry flies, nymphs, and little spinners. You can catch the odd bull as it swims up river to spawn, too. Remember to use only barbless hooks.

INTERESTED IN GUIDED FISHING ADVENTURES?

Check out the fishing page on our website or stop by our Visitor Centre to find out more.



JOHNNY'S WILD OUTDOORS

Revelstoke's one stop shop for the outdoor sportsman!

Servicing Revelstoke for over 50 years, we have the largest selection of fishing and hunting products for all of your outdoor needs. Our extensive knowledge will ensure you have the right products for your ideal sport. We issue BC fishing licenses, offer the latest gear and lures, and provide kayak rentals. We will set you up for fishing in any season, even ice-fishing!

770 Lundell Rd | +1.250.837.4228 | johnnyswildoutdoors.com



AAA GUIDED TOURS

Affordable Angling Adventures.

At AAA Guided Tours we strive to promote safe, sustainable and environmentally friendly fishing practices. We aim at providing future generations of anglers with the knowledge and passion for fishing and to enjoy the outdoors. We provide all levels of anglers with a rewarding experience tailored to their needs and expectations. We offer fly-fishing, spin fishing, trolling, ice fishing & more.

aaa.guided.tours@gmail.com | +1.778.252.1414 | aaaguidedtours.com

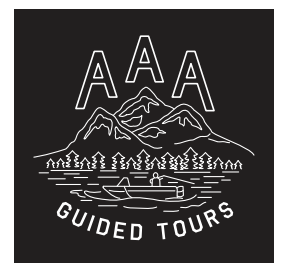




PHOTO: APEX RAFTING

RIVER ADVENTURES FOR THE WHOLE FAMILY.

From scenic floats to adrenaline-pumping rapids.

The Illecillewaet (pronounced ill-a-sill-a-wet) is a glacier-fed river that begins in Glacier National Park and snakes its way through the Selkirk Mountains to its confluence with the Columbia River in Revelstoke. Apex Rafting and Wild Blue Yonder both run trips on this river. Take in lush scenery and shore-side wildlife from the unique vantage and hold on tight through the big waves. The biggest rapids come in high water, from mid-June into mid-July. Low water starts in late July, and allows for a few more stops, swims, and gentler floats along the way. Minimum requirements for kids vary during high water, so check with the rafting companies. If you want a float tailored to them check out the relaxed river float from Wild Blue Yonder on the Columbia River.

PHOTO: WILD BLUE YONDER



PHOTO: WILD BLUE YONDER





APEX RAFTING COMPANY

Our 29th year on this river. Consistent ownership since day 1.

Apex Rafting has been synonymous with Rafting in Revelstoke since 1993. Rated 5 Stars on Facebook, Google and TripAdvisor our focus has always been your safety and enjoyment on this beautiful and exhilarating rafting trip. Up to 26 km on the river with lots of great rapids, scenic floats and stunning views. Truly a fantastic trip.

- All Equipment Provided
- Riverside Fresh Fruit & Pastries
- Rafting Trip Photos no charge

112 First St. E (seasonally)
250-837-6376 / apexrafting.com



Revelstoke Rapids!

Whitewater Rafting in
Mt. Revelstoke National Park.

Have the time of your life paddling big, fun rapids! Only with us will you get **FREE in-the-action photos and supersoaker water fights!** Rated best for families. Daily from Jun 15 to Sep 5. Ages 8+ varies on water levels.

Relaxed Revy

A gentle, evening float
on the historic Columbia River.

Enjoy stunning views while our guides tell stories of the amazing history of the river. Includes a walk to Moses Creek Waterfall. Ages 4+, 1.5 hrs, evenings in July and August.



REVELSTOKE • GRANDE CACHE

Toll-free: 1-877-945-3786
revelstokerafting.ca

Booking Office 9am - 7pm
621 Victoria Road, Revelstoke, BC



PHOTO: HANSEL WILLIAMS / REVELSTOKE MOUNTAIN RESORT



REVELSTOKE MOUNTAIN RESORT.

THE LONGEST VERTICAL DROP IN NORTH AMERICA AT 5,620 FT (1,713 M).

RMR is the only resort in the world to offer lift, cat, heli, and backcountry skiing.



The Resort's new Stellar Chair, accessed from the top of the gondola, is the perfect learning zone for both kids and grown-ups. The chair provides access to wide open, mellow grade green runs named Big Bend, Over Easy and Bacon & Eggs. If your legs still have some gusto left, The Last Spike is a long green run spanning the length of the mountain from the top of the Stoke Chair to the Village Base.



RMR has some of the longest highways of corduroy on the planet. Make the top pitches of Snow Rodeo, Feller Buncher, and Wooley Bully your first foray, all of them cross back over the Last Spike if you need to dip out. Switch it up by meandering over to the Ripper Chair, where the grooming's just as delectable and you can segue into some low-angle glades. If those seem easy, dive into Separate Reality off the top of the Stoke Chair.



Everyone's gunning for it on a powder day: North Bowl. Once patrol drops the rope, traverse skier's right from the top of the Stoke Chair for the lower entry points, or bootpack the Lemming Line into the upper chutes, where you'll also find the track over to Gracias Ridge and Greely Bowl. For the highest point on the mountain, take the bootpack straight up to Sub Peak's tight couloirs, or funnel back down Powder Assault into the upper reaches of North Bowl.

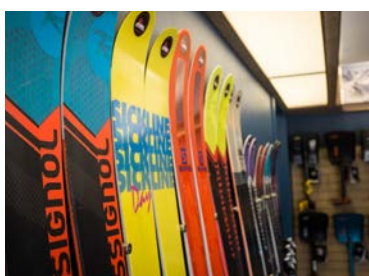


REVVY OUTDOORS OUTFITTERS

Gear, clothing, and accessories for camping, hiking, back-packing, climbing, mountaineering, skiing, shredding and more.

Big mountain skiing and hiking demands a complete kit. We can outfit you properly with the skis and clothing that works - and save you money to boot. You can also pick up your copy of Backcountry Skiing in Rogers Pass, both map and book. Drop by for a friendly chat and a free espresso beverage on us.

Downtown 201 Mackenzie Ave. | +1.250.814.2575 | info@revvyoutdoors.com



POWDER RENTALS

Revelstoke's premiere rental shop.

We have Revelstoke's largest selection of touring skis, splitboards, and avalanche gear. Open daily from 7:30 am - 8 pm. Get set up the night before so you can get going earlier in the morning. Rent the latest skis and boards from Rossignol, Salomon, Black Crows, Icelantic, Line, Jones, Lib-Tech, Capita, YES, Gnu and Burton. Overnight tuning available.

709 Victoria Rd. | +1.250.814.4769 | revelstokepowderrentals.com





REVELSTOKE MOUNTAIN RESORT RENTAL SHOP

Conditions change, so why shouldn't your gear?

With a brand new selection of 2021 gear available from carvers to fat pow-slayers, we're confident we have the right set-up to suit every condition. If conditions change during your trip, swap out your gear anytime free of charge. Book your rental ski and snowboard equipment online in advance (before 11 pm the day prior) and save up to 20% off our walk-in rates.

2950 Camozzi Rd. | +1 250.814.0087 | revelstokemtn.com/rent



CRITICAL PARTS

Expert bootfitting services & hardgoods store at Revelstoke Mountain Resort.

We know that well-fitted gear is critical to success. Here at Critical Parts, our certified bootfitters will do just about anything to keep you shredding first to last chair—pain free! We can punch and grind shells, and build custom footbeds for a perfect fit. Your gear should be the last thing holding you back this winter; come and browse our new 2021 collection of skis, boards and boots and get ready to step up your game.

2950 Camozzi Rd. | +1 250.814.0087 | revelstokemountainresort.com/resort/shopping



R GEAR

Gear up for the cold in style.

Located in the village plaza at RMR, we offer a huge selection of ski and snowboard soft-goods right at your fingertips. Whether you need that extra mid-layer, a new outerwear setup, or simply want a take-home souvenir, we've got you covered. Come and check out our exciting new collection from Dakine, Arc'teryx, Picture Organic Clothing and more.

2950 Camozzi Rd. | +1 250.814.0087 | revelstokemountainresort.com/resort/shopping



REVELSTOKE MOUNTAIN RESORT SNOW SCHOOL

Professional, on-mountain ski and snowboard education.

Our team of certified professionals offer a range of programs to help you and your family make the most of your time on the mountain. Sign kids up for lessons and camps then, reach your own skiing goals through advanced clinics, private lessons or exclusive access to powder or freshly groomed corduroy through the First Tracks program.

2950 Camozzi Rd. | +1 250.814.5060 | revelstokemtn.com/snow-school



ROCKFORD BAR & GRILL

Global flavours & outstanding service at the base of Revelstoke Mountain Resort.

From juicy CAB steaks to calamari après-ski, you'll find the right dish for every mood and time of day. Pair your meal with wines from BC vineyards, beers from local breweries, or cocktails crafted with spirits made right in Revelstoke. Visit our website to reserve online and order takeout.

2950 Camozzi Rd. | +1 250.837.7160 | rockfordgrill.com



MACKENZIE COMMON TAVERN & FOOD TRUCK

Hand-crafted pizza at the base of Revelstoke Mountain Resort

Join us for a quick lunch, après drinks, casual dinner, or order directly from our food truck. Visit Revelstoke Mountain Resort's website to make a reservation, order takeout, or have room service delivered to The Sutton Place Hotel.

2950 Camozzi Rd. | +1 250.814.5500 | revelstokemtn.com/dining



HELI & CAT SKIING.

THE BEST CAT AND HELI SKIING DESTINATION ON THE PLANET.

With two major mountain ranges, a variety of different microclimates and every kind of terrain you can imagine, Revelstoke is the world's mechanized backcountry skiing capital.

Four heli ski companies and three cat-ski operations base out of Revelstoke with countless other options nearby. You'll never find more powder options at your fingertips than in this town. To get the best bang for your buck, first-timers can take a lesson at Revelstoke Mountain Resort and practice skiing longer stretch and deep powder. When you're ready, you can book for the day, multi-day, or multi-night stays based out of a number backcountry lodges or right from town. Go solo and make friends, or bring a group of your own. If you're not sure whether your skis or snowboard are fat enough, fret not, most tours come with powder specific weapons. Be sure to book early, it's a popular pastime!

PHOTO: SELKIRK TANGIERS HELI SKIING



SELKIRK TANGIERS HELI SKIING

Big terrain, small groups.

The snowfall in Revelstoke is the stuff of legends. With over 40 years in the game, you can trust us to fly you to the best of it. With access to over 500,000 acres of untouched wilderness, let us show you the powder playground we're proud to call our backyard.

2100 Oak Drive | +1 800.663.7080 | selkirk-tangiers.com



EAGLE PASS HELISKI - *Small groups. BIG difference. Deep in the Monashees.*

Revelstoke, BC | +1.877.929.3337 | eaglepassheliskiing.com

MICA HELISKIING - *Experience the magic.*

207 Mackenzie Ave | +1.877.837.6191 | micaheli.com



PHOTO: STEVE SHANNON ROGERS PASS

BACKCOUNTRY TOURING.

A MECCA FOR EARNING YOUR TURNS.

There's more Gore-Tex per capita in Revelstoke than anywhere else in Canada. With unequaled access to big mountains and deep snow, this place thrives on a culture of going up to get down.



If you're really new to it, hire a local guide. There are tons of amiable mountain maestros ready to safely show you the goods. If you've got the basics under your belt, including an avalanche safety training (AST) course, and you want to venture out into some simple terrain, aim for The Fingers on Mount Macpherson. The short laps hold a big payoff in fluffy, open runs you can lap over and over. To get there, park at the Nordic Ski Club Lodge for six dollars and follow the Main Loop to Mountain Climb Trail, then turn left at the sign, take the bridge at the end of the nordic trail.



Want a bit more than the basics? Make sure you've tuned into the bulletin on Avalanche.ca. Next, aim for the terrain surrounding Revelstoke Mountain Resort. The easily accessible backcountry offers everything from deliriously deep trees to complex alpine ridges and couloirs. While many of the runs funnel back inbounds, watch out in the woods; the subalpine turns into a dense jungle around RMR, so be sure you know where you're going and have good communication between partners. If you're unfamiliar with the area, play it safe and hire a guided backcountry tour with the resort.



Rogers Pass in Glacier National Park is a Shangri-La for experienced ski tourers and ski mountaineers. For safety, area closures are in place when explosives are being used for highway avalanche control. Be sure to get your mandatory winter permit and ensure you know what areas are open. Once you got this figured out, start off on Grizzly Shoulder or Balu Pass, and graduate to the Seven Steps of Paradise - one of the 50 classic ski descents in North America. If you're prepared for glacier travel, the Asulkan and Illecillewaet valleys will lead you into the alpine over rewardingly complex terrain and onto iconic peaks. You can also stay at the Asulkan Hut to break up the slog.



REVELSTOKE GUIDES BUREAU

Looking for a guide for your next Mountain Adventure?

We are a group of independent ACMG & IFMGA certified guides looking to help you realize your backcountry goals and connect you to the right local guide for your next mountain adventure. Whether you're a beginner looking to learn new skills or an avid climber/ skier wanting to explore new zones, RGB guides can get you out there!

revelstokeguidesbureau@gmail.com | revelstokeguidesbureau.com



REVV OUTDOORS OUTFITTERS - *Backcountry & Ski Mountaineering outfitters. Top brands; great value.*

201 Mackenzie Ave. | +1.250.814.2575 | info@revvoutdoors.com

REVELSTOKE POWDER RENTALS - *Serious equipment for serious mountains.*

709B Victoria Rd W | +1.250.814.4769 | revelstokepowderrentals.com

SNOWMOBILING.

WELCOME TO THE EPICENTRE OF CANADIAN MOUNTAIN SLEDDING.

From November to May, Revelstoke gets between 50 to 60 ft (31 to 37 m) of snow in the most accessible big-mountain terrain that exists.

Pick up the basics and have someone else safely handle the route by booking a tour with a certified guide via a local operator. Choose your adventure, from a 1-hour tour on nicely groomed trails to half-day experiencing powder riding or getting farther to higher views. Ride single or with a partner as you safely venture farther out into the winter wilderness than you've ever been before.

Have avalanche equipment, know how to use it and make sure you've checked Avalanche.ca for the bulletin. After you do, make it over to the groomed access at Boulder and Frisby Mountains that'll shepherd you comfortably into the alpine. Remember, a steady throttle keeps the trails in better shape because nobody likes riding woops. Pay attention to the trail fees for grooming; stop by the Snowmobile Club Welcome Centre for more information.

If you want to rent a machine or hone your skills, there are several options in town for rentals and multi-day clinics.

If you already have ninja status and just want to get kicking, aim for the expansive open ridgetops, basins and face shots waiting for you on Sale Mountain or Keystone-Standard Basin to the north. There's also Mount Hall to the south. Watch out for seasonal and permanent caribou closures—they're for real!

Find out more about riding areas, caribou closures and respecting our backcountry at revelstokesnowmobileclub.com. The Club has been in existence since 1968, and works hard to advocate for our snowmobile areas. Reach out to find out how you can support them.

Snowmobile map and guide: Pick up yours for free from the Revelstoke Visitor Information Centre or at the Boulder Mountain Welcome Centre at 4177 Westside Rd.



ALWAYS CHECK AVALANCHE CONDITIONS BEFORE HEADING OUT: www.avalanche.ca

Download **Boonmaps** on your cell phone to access free trail maps that can be used along with GPS tracking while out of cell service.



GREAT CANADIAN TOURS & GLACIER HOUSE RESORT

The sledder's basecamp.

Sled right from your door. Featuring the largest tenure in North America, we offer the latest Skidoo sleds, and an incredible riding experience. Tours with certified guides, sled and gear rental. Fuel sales on-site. Deluxe accommodation packages available. Check out Glacier House Resort's listing in this guide on page 41.

1870 Glacier Lane | +1.250.837.5030 | riderevelstoke.ca



GLACIER HOUSE
RESORT



PHOTO: PAT GABUTT



REVELSTOKE SNOWMOBILE CLUB

One of Canada's oldest and largest clubs.

Revelstoke Snowmobile Club grooms a 100 km trail system on Boulder Mountain and Frisby Ridge. Both areas are managed and have a pay to use system. Ride with a Daily Trail Pass for \$25 or purchase a yearly membership via our website. All fees go towards supporting the Snowmobile Club, an important part of Revelstoke's community since 1968. The Club is delivering a world class snowmobile experience for our Club members and guest riders by offering the highest quality trails and warmup shelter while promoting safe and responsible use of the backcountry.

4177 Westside Rd.
+1.250.837.3325
revelstokesnowmobileclub.com



**REVELSTOKE
SNOWMOBILE
CLUB**



TROUT LAKE ADVENTURES

Epic Alpine Powder.

Welcome to our camp in Trout Lake that accommodates up to 15 adults. Sled or quad right from the property. We have a large common room, pool table, dry room, fully equipped kitchen and a 12 person sauna to relax and unwind!

5960 Hwy 31, Trout Lake, BC | +1.250.369.6860 | Instagram @troutlakeadventures



Boulder Mountain Resort

The true definition of "direct snowmobile access" to the goods.

Located directly adjacent from the Boulder Mountain snowmobile trail system means fast access to the world class snowmobiling that Revelstoke is famous for. From our relaxing hot tub deck, complimentary highspeed Wi-Fi, luxurious cabins and suites and plenty of parking for your sled trailer, we are the place to stay if you want to get steep and deep in Revy!

3069 Hwy 1 | +1.250.837.4420 | bouldermountainresort.ca





NORDIC SKIING & SNOWSHOEING.

30 KM (19 MI) OF IMPECCABLY GROOMED TRAILS AT MOUNT MACPHERSON.

We've got world-class tracksets for classic skiing and perfectly manicured highways for skate skiing. The Nordic Centre also includes 6 km (3.75 mi) of lit trails for night time looping, and snowshoe trails.

XC Skiing: Begin at the beautiful Mount MacPherson Nordic Lodge and follow the Mickey Olsen Loop. Connect with Evelyn's Choice and Glen's Glide to extend your fun, quick and easy ski.

Snowshoeing: Start with a guided tour around Revelstoke Mountain Resort with the Revelstoke Snowshoe Company. Next, strike out on your own along the Greenbelt trails. From downtown, you can also follow the Mount Revelstoke Trail at the Tournament of Champions trail head behind the Revelstoke Railway Museum—it'll take you up to the Nels Nelsen historic ski jump. The Revelstoke Nordic Ski Club area also has a designated snowshoe trail called Seven Bridges, where you can choose to do the partial or full loop.

Nordic Skiing & Snowshoeing map and guide: Pick up yours for free from the Revelstoke Visitor Information Centre.

XC Skiing: Grab your pup and chase them around the popular 5km dog loop at the Revelstoke Nordic Ski Club Centre. Well-mannered dog owners and dogs only; and please leash up in designated areas and remember to pick up after your dog! After Rex is tucked out, let him rest back at the car as you continue around the perimeter loop. Try the Main Loop, Cedar Ramble, Novice Glides, Creekcrawl, Beaver Lake and more – so many options!

Snowshoeing: Seek out Begbie Falls even in the winter by parking at the beginning of Begbie Falls Forest Service Road, right where the plowed road ends. Follow the trail about 2.5km to the falls. For Sutherland Falls, park at the Blanket Creek Provincial Park gate (without blocking it) and head down the road for 2.5km through snow-draped cedars and hemlock. You can also park at the gate of Mount Revelstoke National Park and head past the Nels Nelsen Historic Site into Inspiration Woods, or the Soren Sorensen loops.

XC Skiing: Show up after dark and ski 6km (3.75 mi) of newly lit trails in the brisk calm of night. Slide farther afield with a headlamp and you can have a picnic dinner at the Ole Sandberg Cabin via the Main Loop. If you want to really crush your workout, add on Hydro Hill. Want to jump into some friendly competition? The Revelstoke Nordic Ski Club presents Headlamp Heroes, a once a month Wednesday night race series. Find the schedule on their website calendar.

Snowshoeing: Be aware of avalanche terrain and conditions, go to Avalanche.ca for more info. Next, aim for Mount Revelstoke National Park's Summit Trail, beginning way down low at the Nels Nelsen Historic Site. It's a 10km trip to the summit from here, mostly under the cover of an evergreen canopy.



ALWAYS CHECK AVALANCHE CONDITIONS BEFORE HEADING OUT: www.avalanche.ca

REVELSTOKE NORDIC SKI CLUB - *One of the oldest ski clubs in Canada.*

Come enjoy skiing the trails for a small day fee or snowshoe for half the day fee. We offer rentals for all ages and sizes, including snowshoes. We also offer group or private ski lessons with an in-house coach. revelstokenordic.org | info@revelstokenordic.org | +1.250.814.4264



DOWNTOWN.

VIBRANT, HISTORIC DOWNTOWN REVELSTOKE.

Locally owned and operated specialty stores and restaurants
to meet your every need and more.

Revelstoke's commercial character echoes its culture with a focus on health, wellness, recreation and environment. You can shop for haute couture or Gore-Tex within a few feet, get specialty kitchen wares, find a smart shoe selection, rent a bike, buy a camping stove, peruse splitboards, book an adventure or buy a new book. Not to mention the variety of eats. Stock up on ethically sourced self-styling products at a salon, or just lay back and enjoy the spa experience. Several storefronts showcase local arts, crafts and jewelry, which you'll also find in spades at the downtown Farmers Market between May and October. Since its Victorian revitalization in 1986, Revelstoke's stood out amongst Western mountain towns as having a strong sense of heritage that it maintains to this day. Heritage walking tours are available through the Revelstoke Museum & Archives.



BIG MOUNTAIN KITCHEN

Confidence in your Kitchen. Mindfulness in your Home.

You deserve to cook for your loved ones, using tools that don't let you down.

Showroom Experience, Online Convenience.

Get it today or preorder what you want!

300 First St W, #2B | +1.250.837.7005 | bigmountain.kitchen



ROYAL LePAGE REVELSTOKE - Canada's Real Estate Agency

300 Mackenzie Ave | +1.250.837.9544 | royallepagerevelstoke.ca | rlprevelstoke@telus.net

CHEERS LIQUOR STORES - Cold beer, wine and spirits delivered right to your door!

109 Victoria Rd E & 1925 Laforme | +1.250.837.4550 | cheersliquor.ca

REVV OUTDOORS OUTFITTERS - Your camp, hike, ski outfitter. Top brands; great value!

201 Mackenzie Ave. | +1.250.814.2575 | info@revvoutdoors.com

REVELSTOKE FAMILY PHARMACY - Prescriptions, home health care, travel vaccinations, and more!

555 Victoria Rd | +1.250.837.5191 | pharmachoice.com/bc/revelstoke-family-pharmacy

SPICE O' LIFE EMPORIUM - Adult Gifts, Glass, Lingerie, T-Shirts, Vapes & More!

427-B Second St E | +1.250.837.2002 | facebook.com/Emporium069

REVELSTOKE.

DINING & DRINKS GUIDE



112 Restaurant & Lounge

Established in 1978, the Regent Hotel's 112 Restaurant & Lounge has long been one of the most refined and highly reviewed restaurants in the area. Our menu features a selection of classic mains.

+1.250.837.2107 | 112 First St E
112restaurant.ca



Begbie Room at The Hillcrest

The Begbie Room offers fresh ingredients, welcoming service, and breathtaking views of the Selkirk and Monashee Mountains. Evening dining features international and continental cuisine.

+1.250.837.3322 | 2100 Oak Dr
hillcresthotel.com



Big Eddy Pub

The Big Eddy Pub – named after the swirling eddy in the Columbia River – is your one stop shop for the classic line-up: a monstrous Caesar, locally brewed beer and coffee, a juicy homemade burger and meaty chicken wings.

+1.250.814.0095 | 2108 Big Eddy Rd
bigeddypub.com



Bootlegger Public House

Located 7km from Revelstoke, The Bootlegger is the perfect place to enjoy a drink after a day in the mountains. Prohibition themed with delicious local cocktails, hot food and a warm ambiance, you'll be glad you came.

+1.250.837.9594 | 1870 Glacier Ln
glacierhouse.com



Mackenzie Tavern & Food Truck

Hand-crafted pizzas, soups, and sandwiches as well as craft beer at the base of Revelstoke Mountain Resort. Join us for a quick lunch, après drinks, casual dinner or order directly from our food truck.

+1.250.814.5500 | 2950 Camozzi Rd
revelstokemtn.com/dining



Mainstreet Cafe

Serving home-style breakfasts and lunches, weekend eggs benny, and a full breakfast menu. Wraps, fresh salads, specialty sandwiches, homemade soups, gourmet coffee and fresh baked desserts.

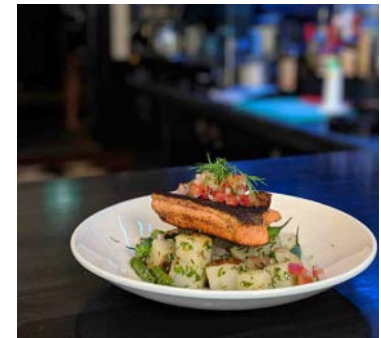
+1.250.837.6888 | 317 Mackenzie Ave



Nico's Pizzeria

From extra-thin to thin to Neapolitan crust, every pizza is cooked right on the stone. From our homemade fresh pasta to our extraordinary chicken wings, Nico's has been serving Revelstoke's best pizza for the past four years.

+1.250.837.7117 | 112 First St W
nicospizzeria.ca



Old School Eatery

A new school twist on old school classics...what we are calling sophisticated comfort food. Old School is a fun and casual dining experience in a 100 year old heritage schoolhouse. Serving brunch and dinner daily!

+1.250.814.4144 | 616 3rd St W
oldschooleatery.ca



The Kingfisher Restaurant

After a revitalizing soak in the hot springs, enjoy high end casual dining with a spectacular view at The Kingfisher Restaurant at Halcyon Hot Springs, one of BC's finest hot springs restaurants.

+1.250.265.3554 | 5655 Hwy 23, Nakusp
halcyon-hotsprings.com



The Modern Bakeshop & Cafe

The Mod Squad are devoted to bringing you old-fashioned, hand-crafted food and drink using delicious local and organic ingredients. We have a selection of gluten free, vegan, non-dairy and other diet options.

+1.250.837.6886 | 212 Mackenzie Ave
themodernbakeshopandcafe.com



The Taco Club

Celebrate life in the mountains with signature cocktails and our curated tequila menu, or bring a group for a round of tacos and local craft beer. Our menu features something for every pallet, and is designed to please a wide variety of dietary requirements.

+1.250.837.0988 | 206 Mackenzie Ave
thetacoclub.ca



The Village Idiot Bar & Grill

One of Revelstoke's top restaurants located in the heart of town, the Village Idiot has become a local favorite. With an après themed dining area and a cozy family friendly atmosphere while providing great service and exceptional food.

+1.250.837.6240 | 306 Mackenzie Ave
thevillageidiot.ca



Chubby Funsters

Come in and experience Chubby Funsters Kitchen and Cocktails, located in the plaza, downtown Revelstoke. Great Canadian food featuring beet lasagna, prime rib dinners, delicious burgers and so much more!

+1.250.837.2014 | 114 Mackenzie Ave.
chubbyfunsters.com



Dose Coffee

A communal hub in the heart of downtown serving up specialty coffee as well as breakfast, lunch and homemade baked treats in a welcoming and inspiring atmosphere.

+1.250.837.6215 | 101 Second St E
dosecoffee.ca



Emo's Restaurant

At Emo's Restaurant, we cater to every member of your family, serving up everything from chicken fingers for the kiddies to BC salmon for the adults. We want every meal you share with us to be a good one, and every visit to be a pleasant experience.

+1.250.837.6443 | 418 First St W
emosrestaurant.ca



Kawakubo Sushi

Offering fresh, authentic Japanese cuisine including sushi, tempura and teriyaki. Delicious meals prepared by master chefs and served right in the heart of Revelstoke.

+1.250.837.2467 | 109 First St E
kawakubo-revelstoke.com



Paramjit's Kitchen

Our Head Chef and founder, Goldie Sanghera, had an idea to create a restaurant that was more than a place that served great food. Paramjit's Kitchen serves delicious Indian, German and Thai cuisine in a relaxed venue.

+1.250.837.2112 | 116 First St W
pamskitchen.ca



Quartermaster Eatery

We believe in eating good food. Through working with small local farms, boutique ranchers, and wild/sustainable fisheries, we create innovative takes on timeless cuisine for the modern diner.

+1.250.814.2565 | 109 1st St W
explorers-society.com/eat-drink



River City Pub & Patio

For a friendly gathering over cold pints and juicy burgers, this is the place to unwind and watch the game. Relive that epic day on the mountain or just kick back after a hard day's work. Fish and chips, burgers, wraps and nachos are the specialties here.

+1.250.837.2107 | 112 First St E
rivercitypub.ca



Rockford Bar & Grill

Global flavours and outstanding service at the base of Revelstoke Mountain Resort. From juicy CAB steaks to calamari après-ski, you'll find the right dish for every mood and time of day.

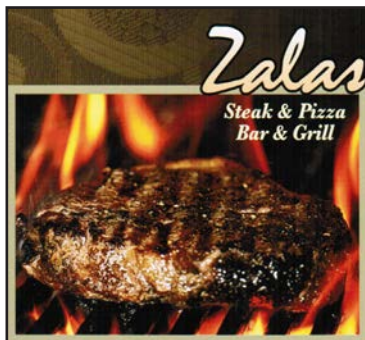
+1.250.837.7160 | 2950 Camozzi Rd
rockfordgrill.com



Woolsey Creek Bistro

By exploring flavors and ingredients from around the world while striving to support the farmers of British Columbia, we give the community an opportunity to enjoy a sustainable dining experience.

+1.250.837.5500 | 604 Second St W
woolseycreekbistro.ca



Zalas

Zalas Restaurant has been providing a truly memorable Canadian dining experience for the past 40 years. Our creative and inviting menu offers classic Italian pastas and pizzas, charbroiled steaks, a variety of seafood selections, other tempting entrees. Fresh ingredients every day!

+1.250.837.5555 | 1601 Victoria Rd.
zalasrestaurant.ca



Restaurant Delivery:

Pick up or get delivery, many restaurants will deliver to your door. If this is not the case, we've got you covered! Connect with our Visitor Information Centre to find out more about third-party delivery options.



PHOTO: ANT CASSELL / DOSE COFFEE

A FOOD SCENE TO SAVOUR, WITH AWARD-WINNING LOCAL CRAFT BEERS & SPIRITS.

Café your way through the day,
après your way into the night.

Grab a healthy and affordable breakfast or a wrap for the trail at one of Revelstoke's many wholesome cafés. If you want to have a leisurely morning, try our new farm to table café or sit down for a full breakfast or even wait for brunch in one of our favorite restaurants. From there, lunch and dinner options extend into an impressive array of world cuisines: Japanese, German, Thai, Chinese, Latin American, Indian, French, and fusion. If you want to keep it simple, find a warm seat in a classic pub with menus serving everything from vegetarian fare to burgers. Classy joints? We have many multi-star stops for you to dust off your dinner jacket. Wash it all down with a frosty pint of local beer or get a locally distilled cocktail at one of our breweries or distilleries in town.



OLD SCHOOL EATERY

Sophisticated comfort food.

A new school twist on old school classics. A fun casual dining experience in a 100 year old heritage schoolhouse. Open for brunch and dinner!

616 3rd St W | +1.250.814.4144 | oldschooleatery.ca



PARAMJIT'S KITCHEN

Quality Indian, German, and Thai food.

Fine offering of fusion food, in the heart of Revelstoke, BC. All of our curry dishes are MSG and gluten-free! Eat-in or take-out.

116 1st St W | +1.250.837.2112 | pamskitchen.ca



**BIG EDDY PUB
& LIQUOR STORE**
2108 BIG EDDY RD
250.814.0095
WWW.BIGEDDYPUB.COM

114 MACKENZIE AVE
250.837.2014
FOLLOW US
ON FACEBOOK

Chubby Funsters
REVELSTOKE B.C.

Village Idiot
Bar & Grill
306 MACKENZIE AVE
250.837.6240
www.thevillageidiot.ca

NEW
DELIVERY
250-837-6250

@thebigchubbyidiot



6 REVELSTOKE MUST DO ACTIVITIES

1 EXPLORE THE WATERFALL TRIFECTA
Summer or winter, Moses, Sutherland and Begbie Falls are a must see and can all be reached in a day! During winter, rent some snowshoes and give yourself a little more time.

2 INDULGE AT OUR INCREDIBLE RESTAURANTS
Revelstoke's food scene is one of our best kept secrets. From fine dining to casual pub experiences, you will find something you like.

3 TREAT YOURSELF TO WELLNESS
Head to the hot springs just out of Revelstoke, get a pedicure, a massage or an osteopathic treatment in town. Keep your body limber by stretching out at one of our yoga studios.

4 DISCOVER LOCAL ART AROUND TOWN
The talent in this town is astonishing! Check out the Art Alleries on your own time, visit the Revelstoke Art Gallery or find local art at our downtown shops and farmers' market!

5 NIGHT NORDIC SKIING: OUR BEST KEPT SECRET
No need to be a pro! The Revelstoke Nordic Ski Club lights up our evenings until 9pm nightly during winter. You can even hitch a ride on the Resort Shuttle on weekends!

6 LAKE REVELSTOKE: THE PLACE TO BE THIS SUMMER
Lake Revelstoke offers 130kms of calm waters, sandy beaches and mountain scenery. Want a camping spot with a view? Check out Martha Creek Provincial Park, or Wadey and Carnes Creek Recreation Sites.



ARTIST: ROB BUCHANAN ART ALLERIES

ARTS & CULTURE

REVELSTOKE IS BURSTING WITH INCREDIBLY CREATIVE MINDS.

With a growing cultural scene primed by festivals, galleries, exhibitions and performances, discover a thriving community of mountain creatives.

From May to October, bump shoulders at the bustling Farm and Craft Markets on Mackenzie Ave as you shop for local crafts, art, and fresh food. Then, a series of surprise concerts are presented in secret locations all through July and August. Want more? Carry on to a solid selection of other venues to find something being played live many nights of the week, year-round. Or take it upscale by grabbing a seat at the Revelstoke Performing Arts Centre as it hosts speakers, concerts, theatre, dance, spoken word and independent films from fall through to spring. Also be sure to swing into the Revelstoke Visual Arts Centre on the first Friday evening of every month (March to December) where you can meet artists during exhibition opening nights.



PHOTO: VANESSA STYVES | VIS ART SHOP @ THE REVELSTOKE FARMERS' MARKET

REVELSTOKE FARMERS' MARKETS

Revelstoke farmers' markets are on all year round! During the summer months, find an array of farmers and craft vendors every Saturday mornings in our downtown core. During winter months, you will find the winter market and its dedicated vendors at the Revelstoke Community Centre bi-weekly. For schedule and location, contact the Revelstoke Visitor Information Centre.



PHOTO: ZOLA LYNCH



BIG EDDY GLASS WORKS

Glass Blowing Studio and Hot Shop.

Come check out our glass blowing studio and hot shop, we're always up to something!! You can sign up for a glass workshop or attend one of our upcoming events! We're located in the Big Eddy, a rad little neighborhood in this big mountain town.

1741 Celgar Road | 250-837-9696 | bigeddyglassworks.ca





PHOTO: M. BARRETT / GUERRILLA GIGS

REVELSTOKE PERFORMING ARTS CENTRE

The Revelstoke Performing Arts Centre is a beautiful spacious facility with great acoustics, lights and comfortable seating. We are excited to announce the launch of our new REVY. Live season of music, theatre and more.

Find out more at artsrevelstoke.com.



GUERRILLA GIGS

Guerrilla Gigs is a series of secret shows held at some of Revelstoke's most iconic locations providing a soundtrack to the summer! The theme is Canadian folk/alt-country/americana sit-down-on-a-blanket-at-sunset tunes, featuring awesome bands from Revelstoke and neighboring cities.



Art + Alley = ART ALLERY.

Revelstoke's newest public art initiative launched in 2019 aims to transform our downtown alleyways into outdoor art galleries. A legacy project by the organizers of LUNA Festival, Art Alleries revitalize dark and disused places into thriving public spaces. Go see for yourself, located on an alleyway between **Connaught and Mackenzie Ave** right in downtown Revelstoke.

REVELSTOKE VISUAL ARTS CENTRE

The Revelstoke Visual Arts Centre and Society exists to exhibit, educate, interpret, preserve and foster the visual, artistic and cultural heritage of the city, region, province and nation.

Become a member and be the first to know about all our exhibitions and workshops! Members can show off their artistic side in our member's show exhibitions or apply for a solo show in the gallery.

The Visual Arts Centre has a fully equipped woodshop, pottery guild, jewelry guild and artist studio spaces for rent.



EXHIBITIONS

Join the artists each month as they showcase their talent through new monthly exhibitions in the gallery. Purchase a piece by a Revelstoke local artist and check out the gift shop! See the website for current and upcoming shows.

EDUCATION

Have fun and get inspired by participating in hands-on workshops across many different mediums of art. Local practicing artists and art educators bring their wealth of talent and experience to lead our educational classes.





JOURNEY THROUGH THE PAST AND PRESENT.

Revelstoke was founded in the 1880s when the industrious trans-continental railway first forged its way through the rugged West.

Born of ornate Victorian architecture, much of the city's original flair survives to this day thanks to a strong mandate to preserve it. From the inception of Canadian mountain tourism to the contributions of logging and mining, it's all a part of our heritage. Visit the art gallery and museums listed here (right) to learn how Rogers Pass became the birthplace of North American mountaineering. Stand on the historic Nels Nelsen ski jump in Mount Revelstoke National Park for a first-hand view of Revelstoke's past and present. Visit the First Footsteps trail in Mount Revelstoke National Park for First Nations artwork. Stroll the Koo Koo Sint trail at the top of the park to follow in explorer David Thompson's seminal footsteps.

PHOTOS: REVELSTOKE MUSEUM & ARCHIVES | MT.MACKENZIE



PHOTOS: REVELSTOKE MUSEUM & ARCHIVES | MACKENZIE AVENUE





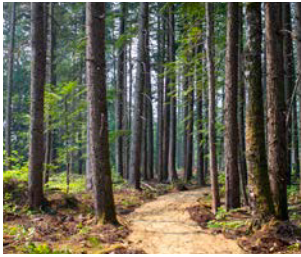
REVELSTOKE DAM VISITOR CENTRE

It's dam good.

Explore one of the largest generating facilities on the Columbia River. Enjoy a tour, interactive exhibits, First Nations gallery, theatre and gift shop.



5km N of Revelstoke on Hwy 23 N | +1.250.814.6697 | bchydro.com/revelstoke



BC INTERIOR FORESTRY MUSEUM

Discover our roots.

Take a stroll through our extensive park-like venue. Experience the struggle and history of forestry in Interior British Columbia. Our museum has the largest collection of chainsaws in BC, and a gift shop featuring local artisans. New for 2019 is the Riverside Forest Walk with 2.5 km of easy walking trails at the museum entrance.



Next door to the Revelstoke Dam | +1.250.837.8078 | bcforestrymuseum.ca



REVELSTOKE MUSEUM & ARCHIVES

Celebrating our history.

Explore two floors of interactive exhibits on local history – learn about First Nations, skiing, avalanches, mining and more. Discover our children's activity room, outdoor heritage garden, archives and reference room, and gift shop.



315 First Street West | +1.250.837.3067 | revelstokemuseum.ca



REVELSTOKE RAILWAY MUSEUM

Follow the tracks to Canada's railway past.

Exhibition galleries and rail yard featuring railway history, tours, venue rentals, gift shop, and a train simulator. Visit our seasonal location at The Last Spike, 50 kms west of Revelstoke on Highway 1.



719 Track Street West | +1.250.837.6060 | railwaymuseum.com



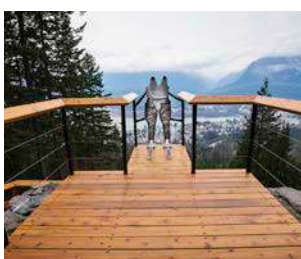
REVELSTOKE VISUAL ARTS CENTRE

A visual arts centre for both our community and visitors.

A non-profit facility dedicated to the creation, exhibition and promotion of the visual arts featuring select regional and local artists, art classes for all ages and abilities, and a gift shop. Experience the local landscape and culture in the works featured. In the summer, enjoy a wander through our community flower and vegetable garden.



320 Wilson Street | +1.250.814.0261 | revelstokeartgallery.ca



NELS NELSEN SKI JUMP AND BEAVER LODGE BIKE PARK

Soar to dizzying heights.

The Nels Nelsen Ski Jump at the base of Mount Revelstoke National Park allows you to explore a historic ski jumping venue which hosted annual tournaments from 1915 to the late 1960s. Just below it, the Beaver Lodge Kids Bike Park is an interpretive bike park and creative playscape designed for children 1½ years and up.



Mount Revelstoke National Park | +1.250.837.7500 | pc.gc.ca/revelstoke



WELLNESS.

TAKE TIME TO UNWIND.

Even the most seasoned mountain people will tell you the best way to stay in the game is to take some time to care for your body, mind and spirit.



Soak in the healing waters of a nearby natural hot spring. Take Highway 23 South over the free ferry towards Nakusp that leaves once per hour. Halcyon Hot Springs Resort is ten minutes farther down the highway from Galena Bay. You can go for a day, evening, or overnight stay. To mix in a bit of adventure, during summer, visit the Halfway River Hot Springs, just a little farther down the highway. For more info visit: sitesandtrailsbc.ca.



They say staying limber keeps you young. Hit up one of Revelstoke's yoga studios for a drop-in class. In the afternoon, grab a coffee and drive up the Meadows in the Sky Parkway in Mount Revelstoke National Park to wander amongst the wildflowers. During the snowy months, rent some snowshoes and stretch your legs while taking in the views. (see our snowshoeing section - pg 24).



Whatever you choose for the day, stay unplugged from your devices. A low-stress ski tour, mountain bike ride, or stay in a backcountry cabin or lodge is a great way to disconnect and purge the digital fuzz from your brain. Advanced yoga classes and mindfulness retreats are also available in town, and don't skip out on getting a massage or a spa treatment!



HALCYON HOT SPRINGS RESORT

Immerse yourself in nature. Immerse yourself in wellness. Situated in a spectacular waterfront location on beautiful Upper Arrow Lake, with views of the soaring Monashee Mountains, you are invited to relax and immerse yourself in ancient healing waters and their beneficial minerals.

5655 Hwy 23, Nakusp | +1.888.689.4699 | halcyon-hotsprings.com



HALCYON
— Hot Springs Resort —



BIRCH & LACE HAIR COMPANY

Hair, nail, & waxing services and boutique.

Indulge yourself in the caring hands of the Birch & Lace team, which offers a variety of services including hair cut & color, manicure & pedicure, and full body & facial waxing. Driven by a mission to connect the beauty industry to environmental responsibility, a service at Birch & Lace is a great way to spend your time in Revelstoke when you are ready to relax and unwind.

215 Mackenzie Ave | +1.250.814.2508 | birchandlcesalon.com





PHOTO: SKYTREK ADVENTURE PARK

DISCOVER WHY REVELSTOKE IS CANADA'S REAL WONDERLAND.

From the beach to the park, the mountain coaster to the trails, people of all ages can get amongst it.

Summer: On a hot day, hit the local swimming hole at Williamson Lake or visit our new Splash Park. You can also send the kids rafting in costume down the cruisy Columbia River with Revelstoke River Pirates—a theatre adventure on water. West of town there's the Enchanted Forest, the Three Valley Gap Ghost Town, or SkyTrek Adventure Park—a fantasy land of tree-top bridge and ladder works with zip lines that'll get your grownup heart pounding, too.

Winter: Come out of your shell at Revelstoke Mountain Resort's Turtle Creek where there's a magic carpet for new skiers. You can also make waves year-round at the Revelstoke Aquatic Centre, with a lap pool, hot tub, sauna, steam room, lazy river, water slide, and diving board.

Summer: Mount Revelstoke National Park is prime for family time. You can drive right to the top and have a picnic in perfect alpine wilderness. When you come back down, take an afternoon snack to the meandering shoreline of Martha Creek Provincial Park on Lake Revelstoke. Its warm waters and wide-open grassy playing fields are just a quick 15 minute drive up Highway 23 North.

Winter: If you're into starry nights and have a headlamp, you can also rent a pair of snowshoes and wander along Revelstoke's Greenbelt River Trails. Or stay inside and cheer on the Revelstoke Grizzlies at a local hockey game, while devouring some of our best poutine.

Summer: Drop in on Revelstoke Mountain Resort's Pipe Mountain Coaster which is always the smash hit of summer. Dash through open forest on a self-controlled downhill roller coaster. While you're there, be sure to swing, climb, jump and free fall your way through the Aerial Adventure Park, a four-storey ropes course and Revelstoke's newest family attraction. If you want to take the adventure to two wheels, head to Mount MacPherson's Stimulus, Dusty Beaver, Beaver Tail or Miller Time trails, where you can chase each other on mountain bikes for hours.

Winter: Pack a thermos of hot chocolate to the Ole Sandberg Cabin at the Mount MacPherson Nordic trails.

PHOTO: ROYCE SIHLIS | THE GNOME ZONE AT RMR



PHOTO: KIDS BIKE PARK AT MOUNT REVELSTOKE NATIONAL PARK





THE ENCHANTED FOREST & SKYTREK ADVENTURE PARK

Two must-visit parks. One location. Fun for everyone!

The Enchanted Forest has been a delight for the young and young at heart for over 60 years! Canada's tallest treehouse, over 350 handmade fairy tale figurines, and a trove of other treasures are waiting to be discovered amongst a lush, old growth rainforest in the heart of the Monashee Mountains. Magic and wonder for all ability levels!

Skytrek Adventure Park provides exhilarating fun for all ages, from toddlers to grandparents! Check out our new attractions coming in 2021! Have a blast and make new memories as you zip, climb, balance, jump, and stride your way through our collection of unique courses, all in the magnificent trees.

32km West of Revelstoke on Highway 1
250.837.9477 | enchantedforestbc.com | skytrekadventurepark.com



Get a new perspective on power at the Revelstoke Dam Visitor Centre.

Bring your camera and get ready for an elevator ride to the top of our 175-meter dam, enjoy our interactive displays and learn how power is made.

We're located only 5 km north of Revelstoke on HWY 23 North and are open seven days a week, 10 a.m. to 4 p.m. from May to September.

Join us for one of our daily guided tours or explore on your own with a self-guided tour. Audio tour rentals are also available in multiple languages.

For more information or to request your tour visit at bchydro.com/revelstoke.

Admission charges apply.



BCH18-995a



PHOTO: ZORA LYNCH | SKY TREK ADVENTURE PARK

17 MUST DO REVEY. FAMILY ACTIVITIES

- 1 Practice your skills on the Mount Revelstoke National Park kids bike park.
- 2 Go for a movie in the historic theatre.
- 3 Take the gondola up the mountain.
- 4 Will you get out of the Escape Room?
- 5 In the winter, hit "The Gnome Zone" snow park.
- 6 For the history buffs, visit the Revelstoke Museum & Archives.
- 7 Go whitewater rafting or enjoy a relaxing river float.
- 8 Visit the Three Valley Gap Ghost Town.
- 9 Go for a picnic on the beach and build sand castles.
- 10 Swim and play at the Aquatic Centre.
- 11 Check out the Railway Museum.
- 12 Take the older ones axe throwing or to play disc golf.
- 13 Find short and rewarding waterfall or forest hike.
- 14 Try mountain biking for all ages & fitness levels.
- 15 Tour the Hydro Dam. (psst... the best view is from the Forestry Museum)
- 16 Hit the Pipe Mountain Coaster.
- 17 Head to the Enchanted Forest & Sky Trek Adventure Park.



REVELSTOKE AQUATIC CENTRE

Fun and relaxation, all year round!

Along with friendly staff, we have a 25-metre pool offering lane swimming, a leisure pool with a lazy river, wild waterslide, climbing wall, hot tub, sauna, and steam room. The facility has free wireless internet, a fitness centre, and is conveniently located within easy walking distance to our downtown core. Rated one of the top 10 things to do in Revelstoke by Trip Advisor, the Aquatic Centre is a great place to stop, stay and play. Be sure to come check us out!

600 Campbell Ave. | +1.250.837.9351 | revelstoke.ca



REVELSTOKE.

ACCOMMODATION GUIDE

BOOK YOUR ACCOMMODATION ON OUR WEBSITE:

www.SeeRevelstoke.com



COAST HILLCREST HOTEL

Home of Selkirk Tangiers Heli-Skiing.

Escape to the Hillcrest Hotel, where you can unwind with a true resort experience. First class cuisine, exceptional views, and an afternoon relaxing at the Serenity Spa are just a few of the things we offer to provide you with a truly memorable vacation. Plan your next visit or family reunion with us and relax while we take care of the details.

2100 Oak Dr | +1.250.837.3322 | hillcresthotel.com



SANDMAN HOTEL REVELSTOKE

Always the smart choice.

There are many reasons to stay at Sandman Hotel Revelstoke: Suites and kitchenettes available, complimentary high speed Internet, two indoor pools & whirlpools, complimentary parking, Denny's 24 Hour Restaurant with room service, Bar One, fitness facilities, business centre, and lift & lodging packages available.

1901 Laforme Blvd. | +1.250.837.5271 | sandmanhotels.com



HOTELS & RESORTS



Basecamp Revelstoke

32 Rooms

Basecamp Revelstoke offers boutique suites situated just outside of Downtown Revelstoke, overlooking the Columbia River and only a 15 minute shuttle ride to Revelstoke Mountain Resort. Designed for families, avid adventure seekers and powder junkies alike, we provide epic views, top notch service and all of the comforts of home along with a bounty of natural splendors right at our doorstep.



- Contact-Free check in
- Mountain and River view suites
- Outdoor hot tubs (open year-round)
- Complimentary wireless Internet
- Flat screen LED TV w/ Telus Optik TV
- Full kitchens, dining & living room area
- One free parking stall per apartment
- Room for a trailer
- Microwave, toaster, kettle, fresh coffee
- Pots & pans, BBQ set, dishes/cutlery
- Complimentary seasonal shuttle service
- Ensuite Washer and dryer
- Pet-friendly rooms available
- Wheel chair access available
- Black out shades in bedrooms

405 Highway 23 North | +1.855.219.4707 | basecampresorts.com | revelstoke@basecampresorts.com



Best Western PLUS Revelstoke

87 Rooms

Located off the Trans-Canada Highway (Highway #1), we are minutes away from world class skiing, snowmobiling, golfing, and hiking. Our modern hotel offers ample amenities including mountain view rooms, free hot breakfast, outdoor hot tubs, and a seasonal pool.



- Free WIFI
- Business centre
- Free hot breakfast
- Hot tubs and seasonal pool
- Mountain views
- Wheelchair access
- In-room coffee, fridge & microwave
- HD Telus Optik TV with 50" Flat screen TV's
- Pet-friendly rooms
- Seasonal free shuttle to the 112 Restaurant
- Fitness centre
- Complimentary guest laundry
- On-site liquor store
- In-room safe
- Free parking

1925 Laforme Blvd | +1.250.837.2043 | +1.855.837.2043 | revelstokebestwestern.com | info@revelstokebestwestern.com



Bison Lodge

6 Rooms

Welcome to the ultimate Canadian ski in/ski out mountainside lodging experience! Located steps above the base of Revelstoke Mountain Resort in Revelstoke, British Columbia, the newly unveiled Bison Lodge is the stuff that mountain holiday dreams are made of.



- Private Chef Dining
- Beer & Wine On-Tap
- Gym
- Rock Climbing Wall
- Private Wine Collection
- Mountain / River Views
- Free Shuttle
- Theatre Room
- Complimentary Massages
- Wet Bar / Games Room
- Free Wifi
- Ski In / Out
- Heli Packages
- Ski / Golf & Stay Packages
- Hot tub & Sauna

2080 Mackenzie Court, #3 | +1.877.271.4217 | revelstokebisonlodge.com | info@revelstokebisonlodge.com



Coast Hillcrest Hotel

75 Rooms

Coast Hillcrest Hotel is the gateway to adventure. Our comfortable accommodations offer incredible mountain views. Only 3km from downtown Revelstoke, the resort is conveniently located near Mount Revelstoke & Glacier National Parks and Revelstoke Mountain Resort.



- Free WiFi
- Telus Optik TV
- Exercise room
- Non-smoking rooms
- Golf, ski and snowmobile rates
- In-room coffee and fridge
- Indoor & outdoor hot tubs
- Restaurant, lounge, and room service
- Pets welcome
- Wheelchair access
- Snowmobile parking
- Serenity Day Spa

2100 Oak Dr | +1.250.837.3322 | +1.800.663.1144 | hillcresthotel.com | info@hillcresthotel.com

HOTELS & RESORTS



Glacier House Resort

16 Rms | 10 Cabins

Step out to adventure with Glacier House Resort! The ideal location for your mountain vacation, whether you are looking for peace and tranquility, or adrenalin fueled activity. The perfect combination of deluxe accommodation and warm, friendly service. Enjoy our spacious fireplace lodge rooms and cozy log cabins. Stunning mountain views, just 10km from town!



- Free WiFi
- Family cabins w/ kitchenette
- Spacious lodge rooms
- Private hot tubs
- Indoor pool and hot tub
- Select rooms are pet friendly
- Canoe and SUP rentals
- Hiking, biking, and dirt biking trails
- Snowmobile rentals / tours
- Snowmobile from your door
- Ski/golf & stay packages
- HD Telus Optik TV
- Side by side ATV / Dirt bike rentals
- The Bootlegger Bar & Restaurant

1870 Glacier Ln | +1.250.837.9594 | +1.877.837.9594 | glacierhouse.com | info@glacierhouse.com



Fairfield Inn & Suites Revelstoke

87 Rooms

Located ideally at the Foothills of the Canadian Rocky mountains the Fairfield Inn and Suites Revelstoke provides a new option for travelers visiting Revelstoke BC. The Fairfield Inn and Suites Revelstoke offers 87 well-appointed rooms that include roomy work areas, a complimentary breakfast and complimentary high-speed internet. Additional amenities include an outdoor hot tub and a well-equipped fitness room.



- Free WiFi
- Amenities nearby
- Business centre
- Free parking
- Non-smoking hotel
- Free hot breakfast
- Fitness centre
- Fridge and microwave
- Wheelchair Accessible
- 24-hour reception desk
- Outdoor Hot tub
- Laundry facilities
- Sundries/mart
- In-room entertainment

1730 Trans Canada Highway | +1.888.236.2427 | marriott.com/hotels/travel/yrvfi-fairfield-inn-and-suites-revelstoke/



Grizz Hotel

56 Rooms

Quaint hotel located in the heart of downtown Revelstoke with a bustling pub attached. Family-friendly environment with affordable prices! Friendly and enthusiastic staff will be more than willing to assist you. New washrooms and beds with high quality linens will provide you a warm and comfortable stay! Currently under room renovations, brand new rooms are coming soon!



- Free WiFi
- Seasonal Rates
- Family suite with kitchen
- Air can & heating
- Free fresh coffee
- Telus Optik TV
- Non-smoking rooms
- Free parking
- Restaurant and Pub
- Laundry facilities
- Front Desk 8am to 12am
- All the rooms are newly renovated
- Free seasonal mountain resort shuttle
- Seasonal patio
- Downtown location

200 3rd St W | +1.250.837.5151 | +1.800.991.4455 | grizzhotel.com | grizzhotel@gmail.com



Ramada by Wyndham Revelstoke

85 Rooms

Join us at our Ramada Revelstoke hotel to access Glacier National Park and Mount Revelstoke National Park from the area's main roadway, the Trans-Canada Highway 1. Take an easy drive to downtown Revelstoke for mountain-style restaurants, bars, and shops by Grizzly Plaza.



- Free WiFi
- Amenities nearby
- Indoor pool & waterslide
- Business centre
- Meeting rooms
- Free parking
- Fitness centre
- Non-smoking hotel
- Free hot breakfast
- Fridge & microwave
- Hot tub
- Laundry facilities
- Sundries/mart
- 24-hour reception desk
- In-room safes

1750 Trans Canada Hwy | +1.250.837.4741 | wyndhamhotels.com/ramada | info@ramadarevelstoke.com



Regent Hotel

45 Rooms

Located in the heart of historic downtown Revelstoke, we are Revelstoke's leader in accommodation, dining and service. This family owned and operated heritage hotel reflects the warmth and character of this mountain town community.

Regent Hotel

- Free WiFi
- High Definition Optik TV
- Exercise room
- Business centre
- Mountain Views
- Pets welcome
- Meeting rooms
- Non-smoking rooms
- Hot tub
- Free parking
- Sauna
- 112 Restaurant & Lounge
- Rivercity Pub & Patio
- On-site liquor store
- Free Hot Breakfast

112 1st St E | +1.250.837.2107 | +1.888.245.5523 | regenthotel.ca | info@regenthotel.ca



Sandman Hotel Revelstoke

173 Rooms

Flanked by the awe-inspiring Monashee and Selkirk Mountains, we are centrally located with easy access to Highway 1 and minutes away from Revelstoke Mountain Resort. Featuring convenient amenities such as cozy beds, indoor pools, hot tubs, and a Denny's Restaurant with room service, you'll find everything you need at Sandman.

Sandman
HOTELS | INNS | SUITES

- Free WiFi
- Free parking
- Bar One
- Denny's Restaurant - 24 hrs
- Room service available
- Ski & Stay Packages
- Snowmobile Parking
- 2 Indoor pools & whirlpools
- Fitness facilities
- Kitchen suites
- Laundry facilities
- In-room coffee, fridge & microwave
- Wheelchair access
- Pet friendly
- Non-smoking rooms

1901 Laforme Blvd | +1.250.837.6161 | +1.800.SANDMAN | sandmanhotels.ca | reservations@sandman.ca



Stoke Hotel SureStay Collection by Best Western

61 Rooms

The Stoke is a funky boutique hotel that throws boring convention out the window. We connect our physical space to the surrounding Canadian Kootenay wilderness through unique design and humble Canadiana style. When you choose to stay with us, you will be greeted with a warm local smile willing to assist you to the highest standards.

STOKE
HOTEL

- Free WiFi
- Affordable rates
- Just off Trans-Canada Hwy
- Mountain and river views
- Alongside the Columbia River
- 24-hr front desk
- Pets welcome
- Guest Laundry
- Ski, golf & snowmobile rates
- Hot tub
- HD Optik TV
- Close to Revelstoke Golf Course
- In room coffee, fridge & microwave
- Free hot breakfast

1911 Fraser Dr | +1.250.837.5221 | +1.877.837.5221 | stokehotel.ca | info@stokehotel.ca



The Cube Hotel

21 Rooms

The Cube breaks the mold of everyday lodging. We aim to reduce our imprint while maintaining great standards. Private rooms with washrooms (showers in the hallway), flat TVs, in room heating/cooling, and a fully equipped common kitchen. Breakfast is included with your stay.

the
cube
HOTEL

- Free WiFi
- Common kitchen
- Ski packages
- Shopping and restaurants nearby
- Private rooms
- Optik TV
- Flat screen TV's in all rooms
- Downtown location
- Dry room
- Free breakfast
- Ski shuttle stop nearby
- Aquatic Centre passes
- Guest lounge/meeting area

311 Campbell Ave | +1.250.837.4086 | cubehotel.ca | thecube@telus.net



The Explorers Society Hotel

9 Rooms

The Explorers Society is more than just a hotel – we are a place where memories are made. Housed in the 1911 McKinnon Building, we are Revelstoke’s modern heritage boutique hotel. Smart, small, safe, and special, experience your next great adventure at The Explorers Society – a TripAdvisor “Best of the Best” for 2021.

- 1911 fully transformed building – luxury meets history
- 9 beautiful guest rooms & suites
- Rooftop guest lounge to gather, hot tub, and sauna
- Quartermaster Eatery: steak, seafood, and special cocktails
- Locally sourced and beautifully prepared fine dining
- Prime downtown Revelstoke location – steps to everything
- Private dining in our modern day speakeasy “The Boiler Room”
- Large, secure parking area and heated gear storage
- Events or meetings in historic McKinnon Hall
- *Where a community of like-minded people gather and return*



109-111 1st St. W | +1.250.814.2565 | +1.855.814.2565 | explorers-society.com | hello@explorers-society.com



The Sutton Place Hotel

210 Rooms

Ski-in/Ski-out hotel at the base of Revelstoke Mountain Resort. Indulge yourself at our world-class, full-service resort community, where you’ll be greeted with exceptional services and amenities. This condominium style property features luxuriously appointed suites designed in a fresh contemporary style.

- Free WiFi
- Fully equipped kitchens
- Non-smoking rooms
- Meeting rooms
- Outdoor pool & hot tub
- Pet friendly suites
- Restaurant and tavern
- Secure underground parking
- Ski/bike storage
- Ski-in/ski-out
- Shuttle service
- Concierge service



2950 Camozzi Rd | +1.250.814.5000 | +1.866.378.8866 | suttonplace.com | info_revelstoke@suttonplace.com

MOTELS & INNS



Alpine Inn & Suites

38 Rooms

Our newly renovated motel, with new carpets, windows, hot tub, and open terrace; concentrates on providing comfortable, clean, quiet and affordable accommodation. We offer king and queen size bedrooms, full kitchen suites, boat/snowmobile/trailer (up to 60 ft.) parking and electrical hookups in parking lot.

- Free WiFi
- 1 & 2 bedroom suites w/ full kitchen
- Aquatic Centre passes
- Indoor hot tub
- Golf, ski and snowmobile rates
- In-room coffee, fridge & microwave
- Non-smoking rooms
- Free public computer, fax & scanner
- Air-conditioning & heating
- Super long trailer parking
- Seasonal rates
- Shopping/restaurants nearby
- On-site pop machine
- Amenities nearby
- BBQ grills



1001 2nd St W | +1.250.837.2116 | +1.800.876.8206 | alpineinnrevelstoke.com | alpineinn@rctvonline.net



Days Inn & Suites

56 Rooms

From spacious and newly renovated rooms, featuring 250 thread count sheets, to the 24-hour complimentary gourmet coffee served in the lobby, amenities like these, combined with friendly customer service, ensures that you’ll have the best possible stay in Revelstoke.

- Free WiFi
- Aquatic Centre passes
- Telus Optik TV
- Complimentary breakfast
- Wyndham rewards points
- Golf, ski and snowmobile rates
- In-room coffee, fridge & microwave
- Kitchen suites
- Laundry facilities & drying room
- Online booking
- Pets welcome
- Pub/lounge nearby
- Snowmobile parking
- Wheelchair access



301 Wright St | +1.250.837.2191 | +1.250.837.2296 | daysinn.ca | mail@daysinnrevelstoke.ca

MOTELS & INNS



Monashee Lodge

16 Rooms

Clean, quiet, friendly and economical. A small comfortable motel, taking pride in making you feel at home. We want your stay to be memorable...for all the right reasons.



- Free WiFi/Cable TV
- Family/Kitchenette rooms
- Free Resort Ski Shuttle
- All non-smoking rooms
- Pets not allowed
- In-room coffee & fridge
- Sledgers, skiers, motorcycles welcome
- Guest laundry facilities
- Close to restaurants
- Free Grab & Go Breakfast
- Games room (pool table, foosball)

1601 3rd St W | +1.250.814.2553 | monasheelodge.com | info@monasheelodge.com



Motel 6 Revelstoke

46 Rooms

Our 46 new guest rooms are offered with or without kitchens. The Revelstoke Motel 6 can accommodate any group or family yet is cozy enough to make you feel right at home. Great dining is only steps away.



- Free WiFi & wired Internet
- Aquatic Centre passes
- Cable TV
- Continental breakfast
- Hot tub
- Amenities nearby
- Golf, ski and snowmobile rates
- In-room coffee, fridge, & microwave
- Kitchen suites
- Non-smoking rooms
- Pets welcome
- Seasonal rates
- Wheelchair access

1500 1st St W | +1.250.837.2164 | +1.877.837.8337 | motel6.com | motel6revelstoke@gmail.com



Revelstoke Lodge

42 Rooms

The Revelstoke Lodge is dedicated to providing you with a clean and comfortable stay at a price you can afford. For both summer and winter vacations, the Revelstoke Lodge is the choice for hotel or motel accommodation in Revelstoke. All guests get free access to Revelstoke's Aquatic Centre and free WiFi.



- Free WiFi
- Aquatic Centre passes
- Cable TV
- Amenities nearby
- Downtown location
- In-room coffee, fridge & microwave
- Non-smoking rooms
- Online booking
- No pets
- Seasonal rates
- Golf, ski and snowmobile rates
- Restaurants nearby
- Queen & king size beds

601 1st St W | +1.250.837.2181 | 1.888.559.1979 | revelstokelodge.com | innkeeper@revelstokelodge.com



Super 8

44 Rooms

We are located just off the Trans-Canada Highway at the downtown Revelstoke access. All of our rooms provide the comfort and value that you have come to expect from a Super 8.



- Free WiFi
- Non-smoking rooms
- Shopping and restaurants nearby
- In-room coffee, fridge & microwave
- Tim Horton's next door
- Lounge nearby
- Ski & snowmobile packages
- Snowmobile parking
- Wheelchair access
- Complimentary continental breakfast
- Indoor pool & hot tub
- Telus Optik TV

1700 Victoria Rd W | +1.250.837.0888 | +1.866.926.0888 | super8revelstoke.com | info@super8revelstoke.com



Swiss Chalet Motel

22 Rooms

We strive to provide clean, comfortable, well-appointed accommodations at a great value! All rooms are non-smoking, FREE 'Grab & Go' Breakfast, FREE wireless Internet, and amenities for every budget. Close to downtown (less than 1km to Mackenzie Avenue). Book direct for best rates.



- Free WiFi
- All non-smoking rooms
- Air-conditioning
- Bathroom stone counter tops
- Seasonal rates
- In room coffee & bar size refrigerators
- Queen & king size beds
- Simmons "Recharge" pillow top mattresses
- Summer and Winter Packages
- HD Optik TV
- Some rooms with balcony
- Two bedroom units
- Free 'grab & go' breakfast
- Convenience store next door

1101 Victoria Rd W | +1.250.837.4650 | +1.877.837.4650 | text number 7 am to 11 pm +1.250.814.3876 | swisschaletmotel.com | info@swisschaletmotel.com



The OI' Frontier Motel

28 Rooms

Each clean and cozy room includes free local phone calls, fibre optic WiFi, complimentary ice, and air conditioning. We also have non-smoking rooms available and pets are welcome! Conveniently located next to a gas station.



- Telus Optik TV
- Convenience store (7am-midnight)
- Low rates
- Coach parking
- Group meals/bus tours
- Non-smoking rooms
- Pet rooms available
- Restaurant on-site
- Ski packages
- Snowmobile parking

Corner of Hwy 1 and Hwy 23 N | +1.250.837.5119 | +1.800.382.7763 | <http://frontier-motel.hotelskootenayrockies.com/en/> | welcome@rctvonline.net

BED & BREAKFASTS / HOSTELS



Courthouse Inn

10 Rooms

Adult-oriented 10 room B&B style boutique inn situated across from the historic Revelstoke Courthouse. Within walking distance to restaurants and shops. Complimentary: passes to the Revelstoke Aquatic Centre; built-in boot and glove dryer; coffee, tea, hot chocolate and fresh baked cookies in common room.



- Free WiFi
- Luxury linens
- Air conditioning
- No pets
- Concierge service
- All Non-Smoking rooms
- Amenities Nearby
- Children 13 years & older welcome
- 3 Course Gourmet Breakfast
- Parking Lot on property
- Guest Common Area
- Golf & Ski Rates

312 Kootenay St | +1.250.837.3369 | +1.877.837.3369 | courthouseinnrevelstoke.com | info@courthouseinnrevelstoke.com



Journey's Perch Guesthouse

5 Rooms

Located midway between Revelstoke Mountain Resort and downtown Revelstoke, Journey's Perch provides a warm, welcoming space where guests can decompress and prepare for days full of activity in the Revelstoke area. Historically, the building was built as a Lutheran Church, but since closing it's doors in 2013, a vision to repurpose the beautiful space was realized.



- Free WiFi
- Luxury Linens
- Cable and smart TV
- Air Conditioning
- Large on-site parking
- Secure bike lock-up
- Bike wash / tune up station
- Secure Ski / board lock up
- Commercial boot / glove dryers
- Steps away from resort shuttle
- Large fully equipped kitchen
- Spacious living areas
- Comfortable dining area
- Patios and BBQ area

1502 Mountain View Dr | +1.250.683.8708 | journeysperch.com | info@journeysperch.com



Poppi's Guesthouse

5 Rooms

Prefer the comforts of a guesthouse to the anonymity of a hotel room? Tired of restaurant food and enjoy preparing your own home-cooked meals? Looking forward to sharing stories with other easy-going travellers in a friendly, communal living space before retiring to your own private, locked bedroom? Poppi's Guesthouse is the ideal accommodation for you! Features 5 private bedrooms, 2 shared bathrooms, a fully-equipped kitchen, and 2 comfy living rooms.



- Free WiFi
- Aquatic Centre passes
- Air conditioning
- Boot warmers
- 2 blocks from downtown Revelstoke
- Ski wax/bike tune room
- All non-smoking rooms
- Free laundry
- Secure bike shed
- Secure ski shed
- Ski packages
- Free off-street parking
- Bike wash station
- Barbecue

313 1st St E | +1.250.837.9192 | poppis.ca | info@poppis.ca



Revelstoke Backpacker Hostel

18 Rooms

With four seasons of epic adventures, Revelstoke is the place to be and we are the place to stay! Located in the heart of vibrant downtown Revelstoke, we have the best location, great facilities and a lively, social atmosphere. We offer simple, affordable accommodation for the young and young at heart.



- Free Wifi
- Ski / Board / Bike storage
- Common kitchen
- Common lounge area
- Amenities nearby
- Private rooms
- Shared rooms
- Downtown location
- Online booking
- Laundry (paid)
- Pubs/restaurants nearby

400 2nd St W | +1.250.837.4050 | +1.888.663.8825 | revyhostel.com | info@revyhostel.com

B&B & VACATION RENTALS



VALLEY RETREAT VACATION RENTAL

"Not your Grandma's B&B."

Stay with the best, just 1.5 km from Revelstoke Mountain Resort! Featuring a hot tub, private ensuites, drying room, tune-up benches, organic breakfast, WiFi, comfy beds, soft linens, and organic toiletries.

3250 Airport Way | +1.250.200.1136 | valleyretreat.ca



VALLEY RETREAT
REVELSTOKE

HOLTEN HERITAGE HOUSE B&B

1221 1st St W | +1.250.837.2801 | holtenbedandbreakfast.ca

STOKE STASH B&B

488 Alpine Lane W | +1.250.837.6106 | stokestash.com

CAMPING.

PHOTO: ERIC HANSSON, MT. BESSIE

	Flush Washrooms	Showers	Store	Laundry	Kitchen Facility	Pets	Playground	Pool / hot tub	Boat Launch	Pull Through Sites	Full Hook Ups	Fire Pits	Picnic Sites	Swimming	Nature Trails	Downtown Nearby	Food/Services Nearby	Reservations	Overflow Camping	WiFi	Sani Station	Discounted Rates			
Arrow Lakes Prov. Park +1.250.837.5734 Sites: 17 Avg. Rate: \$20						•			•			•		•									•	9550 Hwy 23 South 52 km from Revelstoke westkootenayparks.com	
Blanket Creek Prov. Park +1.250.837.5734 Sites: 104 Avg. Rate: \$28	•	•																					•	•	5050 Hwy 23 South 24 km from Revelstoke westkootenayparks.com
Boulder Mountain "4 Season" Resort +1.250.837.4420 Sites: 29 Avg. Rate: \$45	•	•	•	•			•	•	•	•	•	•	•					•	•	•	•				3069 Trans Canada Hwy 3.5 km from Revelstoke bouldermountainresort.ca
Crazy Creek Resort +1.250.836.4097 Sites: 76 Avg. Rate: \$35	•	•	•				•	•	•	•	•	•	•	•	•			•	•	•	•	•	•		6162 Trans Canada Hwy 35 kms on Hwy 1 W crazycreekresort.com
Lamplighter Campground +1.250.837.3385 Sites: 50 Avg. Rate: \$35	•	•			•	•	•	•			•	•				•		•							1760 Nixon Rd. lamplightercampground.com
Snowforest Campground +1.250.837.7500 Sites: 62 AvRate: \$39 + national park pass	•	•				•										•		•							Mount Revelstoke National Park pc.gc.ca/revelstoke-camping
Revelstoke Campground +1.250.837.2085 Sites: 175 Avg. Rate: \$35	•	•	•	•		•	•	•				•	•	•	•	•	•	•	•				•		2411 Koa Rd. revelstokecampground.com
Martha Creek Prov. Park +1.250.837.5734 Sites: 46 Avg. Rate: \$28	•	•					•	•				•	•	•	•			•					•	•	1475 Hwy 23 North 20 kms from Revelstoke westkootenayparks.com
Williamson Lake Campground +1.250.837.8806 Sites: 42 Avg. Rate: \$30	•	•				•	•					•	•	•	•	•	•	•	•						1817 Williamson Lake Rd williamsonlakecampground.ca



REVVY OUTDOORS OUTFITTERS

Gear, clothing, and accessories for camping, hiking, back-packing, climbing, mountaineering, skiing, shredding and more.

We are your camping headquarters! Car or back-country camping and everything in between. Tents, sleeping bags, stoves, cookware, food, boots, packs, duffels, plus a huge selection of handy accessories.

Downtown 201 Mackenzie Ave. | +1.250.814.2575 | info@revvyoutdoors.com





BOULDER MOUNTAIN FOUR SEASON RESORT

Cabins, suites, RV sites, glamping, and forested camping.

We are located 3.5 km west of Revelstoke, on Highway #1.

Your perfect base camp with direct access to the Boulder and Frisby trail head, with some of North Americas best snowmobile, ATV, hiking and biking trails.

3069 Trans Canada Highway - Revelstoke, BC.
+1.250.837.4420 | bouldermountainresort.ca



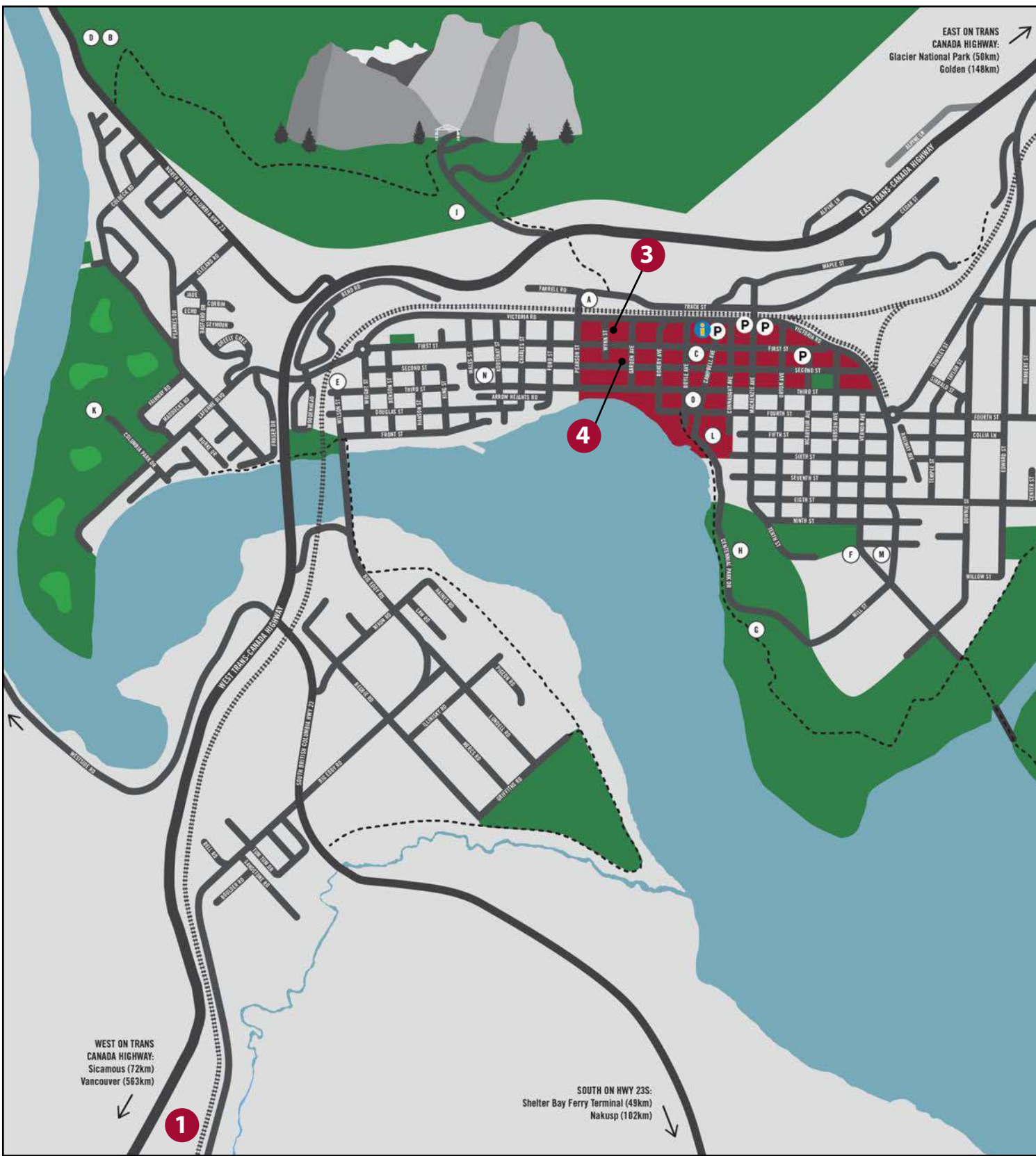
REVELSTOKE CAMPGROUND

Full hookup pull-through sites w/ trees, camping cabins, 2 bedroom chalets w/ kitchen.

- Family oriented, treed meadow with spectacular views of the mountains
- Heated outdoor pool (July long weekend to Sept Long weekend), hot showers
- Laundry room and store, free WiFi station, playground, duck pond, pet friendly, pet walk, hiking trails
- Over 40 species of trees and birds, quiet and secure settings, Mount Revelstoke National Park nearby
- Offers in high season: movie night, ice cream social, pancake breakfast, duck petting and feeding
- Campground: May 1 - Oct 1 | Cabins/Chalets: OPEN ALL YEAR | 5 min drive to Downtown Revelstoke

2411 Koa Road | +1.250.837.2085 (info) | +1.844.837.2085 (reservations) | revelstokecampground.com





1

BOULDER MOUNTAIN
RESORT
CABINS · RV SITES · TENTING · SLEDDING

Open year-round

3069 Trans Canada Highway - 6 km from downtown
+1.250.837.4420 | bouldermountainresort.ca

2

COAST
hillcrest hotel

Unsurpassed service

2100 Oak Dr
+1.250.837.3322 | hillcresthotel.com



3

WILD BLUE YONDER
RAFTING ADVENTURES

Where magic happens
621 Victoria Rd
+1.877.945.3786 | wildblueyonder.ca

4

Woolsey Creek Bistro
REVELSTOKE, BC

Casual fine dining
604 2nd St W
+1.250.837.5500 | woolseycreekbistro.ca

Regent Hotel

REVELSTOKE



R
RIVER CITY PUB

Revelstoke's most iconic bar since 1932. Gourmet hand pressed burgers & local beer on tap

ONE TWELVE
112
RESTAURANT

Handcrafted cocktails, excellent wine & dine. Enjoy a casual elegance in downtown Revelstoke.

C
CHEERS
LIQUOR STORES

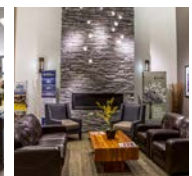
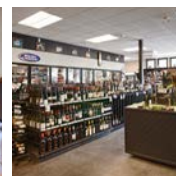
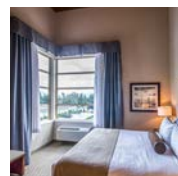
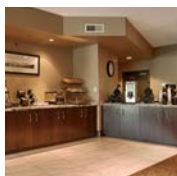
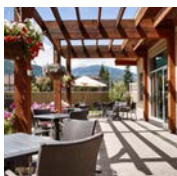
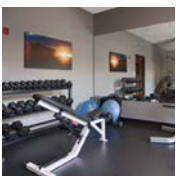
Chilled beer, wine and spirits located next door to the Regent Hotel.

112 FIRST STREET EAST | 250.837.2107 | REGENT HOTEL CA

1925 Laforme Blvd. Revelstoke, BC
off the Trans Canada Highway



BW
Best
Western
PLUS.



BOOK DIRECTLY

1.855.837.2043 | RevelstokeBestWestern.com
Every Best Western branded hotel is independently owned and operated.

